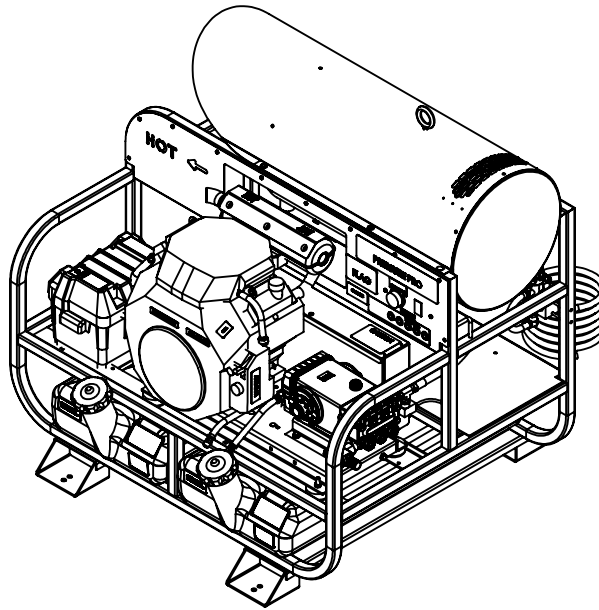


# 12V SUPER SKID PARTS MANUAL



## VARIATIONS

REV 1.0 BEGINNING SERIAL NUMBER

PART NUMBER	GPM	PSI	ENGINE	PUMP
4012PRO-10G	4.0	3500	GX390UTQNR2	TS1511
5012PRO-10G	5.0	3000	GX390UTQNR2	TS1511
5012PRO-10C	5.0	3000	GX390UTQNR2	5PP3140
5012PRO-35C	5.0	3500	GX630RQXF6	5PP3150
PP6012PRO-20G*	5.5	3500	GX630RQXF6	HP5535
6012PRO-20G-V	5.5	3500	356447-0270-G1	HP5535
6012PRO-10G	5.5	4000	GX630RQXF6	TSP1821
7012PRO-40HA	7.0	4000	GX690RHTAPP	XWA-M7G40N
8012PRO-30HG	8.0	3000	GX690RHTAPP	TSF2021
8012PRO-35HG	8.0	3500	GX690RHTAPP	TSF2021

## TABLE OF CONTENTS

SERVICE WARNINGS.....PG 3

### PARTS BREAKDOWNS

MACHINE VARIATIONS.....PG 8

MOTOR PUMP ASSY.....PG 10

COIL TANK ASSEMBLY.....PG 12

CONTROL PANEL.....PG 14

PLUMBING KITS.....PG 15

DRIVE KITS.....PG 17

BATTERY WIRING KIT.....PG 24

ACCESSORIES.....PG 25

PUMP BREAKDOWNS.....PG 26

BURNER HEAD BREAKDOWN..PG 33

WIRING DIAGRAMS.....PG 34



**EXTREMELY HAZARDOUS OR DANGEROUS SITUATION THAT WILL RESULT IN DEATH OR SERIOUS INJURY IF NOT OBEYED OR AVOIDED.**



**DO NOT FILL OR REFILL THE ENGINE WITH FUEL WHILE THE ENGINE IS RUNNING. STOP THE ENGINE, RELEASE THE PRESSURE IN THE HOSE AND ALLOW THE ENGINE TO COOL FOR AT LEAST 5 MINUTES BEFORE REFUELING.**

**DO NOT SMOKE WHEN REFILLING ANY FUEL TANKS.**

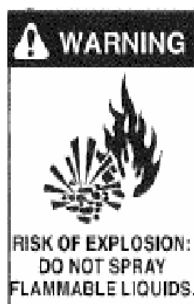
**DO NOT REFUEL INDOORS.**

**REFILL ONLY IN A WELL VENTILATED AREA.**

**DO NOT OVER FILL TANKS. REFILL TANKS SLOWLY TO AVOID SPILLING FUEL.**

**DO NOT RESTART MACHINE UNTILL ALL FUEL SPILLS HAVE BEEN THOROUGHLY CLEANED UP AND ANY RESIDUAL FUEL HAS EVAPORATED.**

**DO NOT STORE THE MACHINE NEAR OPEN FLAME, HEAT SOURCE OR ANY DEVICE THAT COULD CREATE A SPARK.**



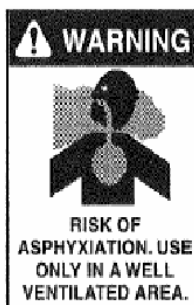
**DO NOT SPRAY FLAMMABLE LIQUIDS.**

**DO NOT OPERATE PRESSURE WASHER IN THE PRESENCE OF FLAMMABLE LIQUIDS, VAPORS, GASSES, COMBUSTIBLE DUST OR ANY OTHER COMBUSTIBLE MATERIALS.**

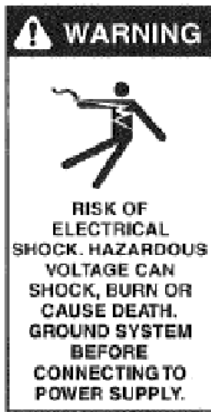
**DO NOT USE CRANKCASE OR WASTE OIL.**

**DO NOT PUT GASOLINE IN ANY TANK INTENDED FOR FUEL OIL.**

**USE ONLY No.1 OR No.2 HEATING OIL OR DIESEL FUEL IN THE BURNER TANK.**



**DO NOT OPERATE PRESSURE WASHER IN AN ENCLOSED AREA. USE ONLY IN A WELL VENTILATED AREA. PROPER VENTILATION AND OXYGEN SUPPLY IS NEED TO SUSTAIN YOUR LIFE AND FOR THE SAFE AND EFFICIENT OPERATION OF THIS MACHINE.**



**DO NOT DIRECT THE WATER STREAM OR SPRAY AT ANY ELECTRICAL INSTALLATION OF ANY KIND INCLUDING LIGHTS.**

**DO NOT USE THE WATER STREAM TO CLEAN THE PRESSURE WASHER.**

**DO NOT USE EXTENSION CORDS. USE ADDITIONAL HOSES.**

**DO NOT USE THE PRESSURE WASHER IF THE GFCI, CIRCUIT BREAKER OR THERMAL OVERLOAD PROTECTOR TRIPS.**

**DO NOT USE WHILE RAINING.**

**DO NOT USE IF POWER SUPPLY CORD IS DAMAGED.**

**DO NOT REPAIR POWER SUPPLY CORD. REPLACE IT.**

**DO NOT ALLOW POWER CORD TO LAY IN STANDING WATER.**

**USE ONLY FACTORY SUPPLIED CORD SET WITH A PROPERLY GROUNDED RECEPTACLE THAT IS EQUIPPED WITH A GROUND FAULT CIRCUIT INTERRUPTER.**

**USE ONLY A PROPERLY SIZED AND ISOLATED ELECTRICAL SUPPLY CAPABLE OF THE FULL LOAD AMPERAGE THAT THE PRESSURE WASHER REQUIRES.**



**DO NOT USE THE PRESSURE WASHER WHILE STANDING ON A LADDER OR SCAFFOLDING.**

**DO NOT USE WHILE STANDING ON PITCHED ROOFS.**

**WET SURFACE IS SLIPPERY. DANGER OF SLIP AND FALL.**



**DO NOT POINT THE WATER STREAM AT ANY PERSONS OR ANIMALS.**

**DO NOT OPERATE IN THE VICINITY OF CHILDREN.**

**DO NOT USE THE WATER STREAM TO CLEAN ANY PROTECTIVE CLOTHING OR BOOTS.**



**USE ONLY FACTORY APPROVED IDENTICAL REPLACEMENT PARTS.**

**DO NOT CHANGE OR TAMPER WITH FACTORY PRESET**

**ADJUSTMENTS. NEVER DEFEAT OR DISABLE ANY SAFETY DEVICES ON THE MACHINE.**



DO NOT OPERATE THE UNIT WITH A MALFUNCTIONING BURNER OR BURNER CONTROL. INSPECT BURNER AND BURNER CONTROL OPERATION BEFORE EACH USE. FAILURE TO DO SO MAY RESULT IN AN EXPLOSION OR FIRE. IF YOU SUSPECT A

PROBLEM WITH THE BURNER, DISCONTINUE USE IMMEDIATELY AND CONTACT YOUR LOCAL AUTHORIZED DISTRIBUTOR.

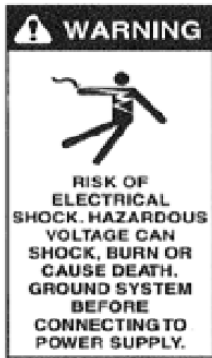
**WARNING! (Liquid Petroleum or Natural Gas Fired Units)**

FOR YOUR SAFETY, IF YOU SMELL GAS:

1. OPEN WINDOWS.
2. DO NOT TOUCH ELECTRICAL SWITCHES.
3. TURN OFF BREAKER SWITCH SUPPLYING POWER TO UNIT. CLOSE GAS SUPPLY VALVE TO UNIT.
4. EXTINGUISH ANY OPEN FLAME.
5. IMMEDIATELY EVACUATE PREMISES AND CALL YOUR GAS SUPPLIER.
6. MACHINES CAN CAUSE AN EXPLOSION WHEN OPERATED NEAR FLAMMABLE MATERIALS AND VAPORS. DO NOT- USE THIS MACHINE WITH OR NEAR FUELS, GRAIN DUST, SOLVENTS, THINNERS OR OTHER FLAMMABLE MATERIALS.
7. THIS UNIT MUST BE INSTALLED IN COMPLIANCE WITH ALL APPLICABLE GAS CODES. FAILURE TO DO SO COULD RESULT IN INJURY OR DEATH TO YOU OR TO OTHER PERSONNEL.
8. USE NO. 1 OR NO. 2 FUEL OIL ONLY IN OIL FIRED MACHINES. NEVER INTRODUCE GASOLINE TO THE FUEL OIL TANK. DOING SO COULD RESULT IN AN EXPLOSION OR FIRE. KEEP THE PROPER FUEL IN THE PROPER TANK.



**POTENTIALLY HAZARDOUS SITUATION THAT COULD RESULT IN DEATH OR SERIOUS INJURY IF NOT OBEYED OR AVOIDED.**



**DISCONNECT POWER BEFORE SERVICING THE PRESSURE WASHER.**

**DISCONNECT SPARK PLUG BEFORE SERVICING THE PRESSURE WASHER.**

**DO NOT DIRECT THE WATER STREAM OR SPRAY AT ANY ELECTRICAL INSTALLATION OF ANY KIND INCLUDING LIGHTS.**



**DO NOT TOUCH HOT SURFACES. EG. MUFFLER, BURNER, ENGINE, HEAT EXCHANGER, EXHAUST HEAD.**

**USE ONLY INSULATED EXTENSION WAND WITH HOT WATER.**

**DO NOT ALLOW HOSES TO TOUCH HOT SURFACE.**



**DO NOT USE PRESSURE WASHER WITHOUT PROPER PROTECTIVE WEAR. USE EYE PROTECTION, RUBBER GLOVES, RUBBER BOOTS, AND PROTECTIVE CLOTHING.**

**DO NOT USE CORROSIVE OR AGGRESSIVE CHEMICALS WITHOUT PROPER PROTECTIVE WEAR.**

**THIS MACHINE PRODUCES HOT WATER AT VERY HIGH PRESSURES. USE ONLY APPROVED ACCESSORIES RATED FOR HOT WATER AND HIGH PRESSURE.**



**POTENTIALLY HAZARDOUS SITUATION THAT COULD RESULT IN PERSONAL INJURY OR PROPERTY DAMAGE IF NOT OBEYED OR AVOIDED.**

**DO NOT** LEAVE THE PRESSURE WASHER RUNNING UNATTENDED. TURN THE MACHINE OFF AND RELEASE ALL PRESSURE FROM THE SYSTEM.

**DO NOT** DEFEAT THE TRIGGER GUN SAFETY

**DO NOT** LOCK THE TRIGGER IN THE OPEN POSITION IN ANY WAY.

KNOW THE MACHINE CONTROLS AND HOW TO QUICKLY SHUT DOWN AND RELEASE ALL PRESSURE IN THE SYSTEM.

**DO NOT** OPERATE THE MACHINE WITHOUT ALL GUARDS AND PROTECTIVE COVERS IN PLACE.

**DO NOT** ALLOW ANY PART OF PERSONS OR HOSES TO CONTACT HOT SURFACES.

DO NOT HAVE ENGINE EXHAUST POINTING AT FLAMMABLE MATERIALS.

**INSPECT** THE PRESSURE WASHER AND HOSES FOR DAMAGED PARTS DAILY.

REPAIR LEAKS AS THEY HAPPEN TO PREVENT FURTHER DAMAGE.

**DO NOT** OPERATE WITH ANY FAULTY OR DAMAGED COMPONENTS.

**DISCONNECT POWER** CORD, BATTERY NEGATIVE AND SPARK PLUG BEFORE PERFORMING ANY SERVICE ON THE PRESSURE WASHER.

KEEP ALL HOSES AND POWER CORDS AWAY FROM VEHICLE TRAFFIC.

**DO NOT** MOVE THE MACHINE BY PULLING ON THE HOSE.

DO NOT LEAVE THE MACHINE EXPOSED TO HARSH ENVIRONMENTS.

DO NOT OPERATE THE MACHINE IN THE RAIN.

**DO NOT** DIRECT THE HIGH PRESSURE WATER STREAM AT FRAGILE OBJECTS.

**DO NOT** USE ANY ACCESSORIES UNLESS THEY ARE RATED AT OR ABOVE THE WORKING PRESSURE AND TEMPERATURE OF THE MACHINE.

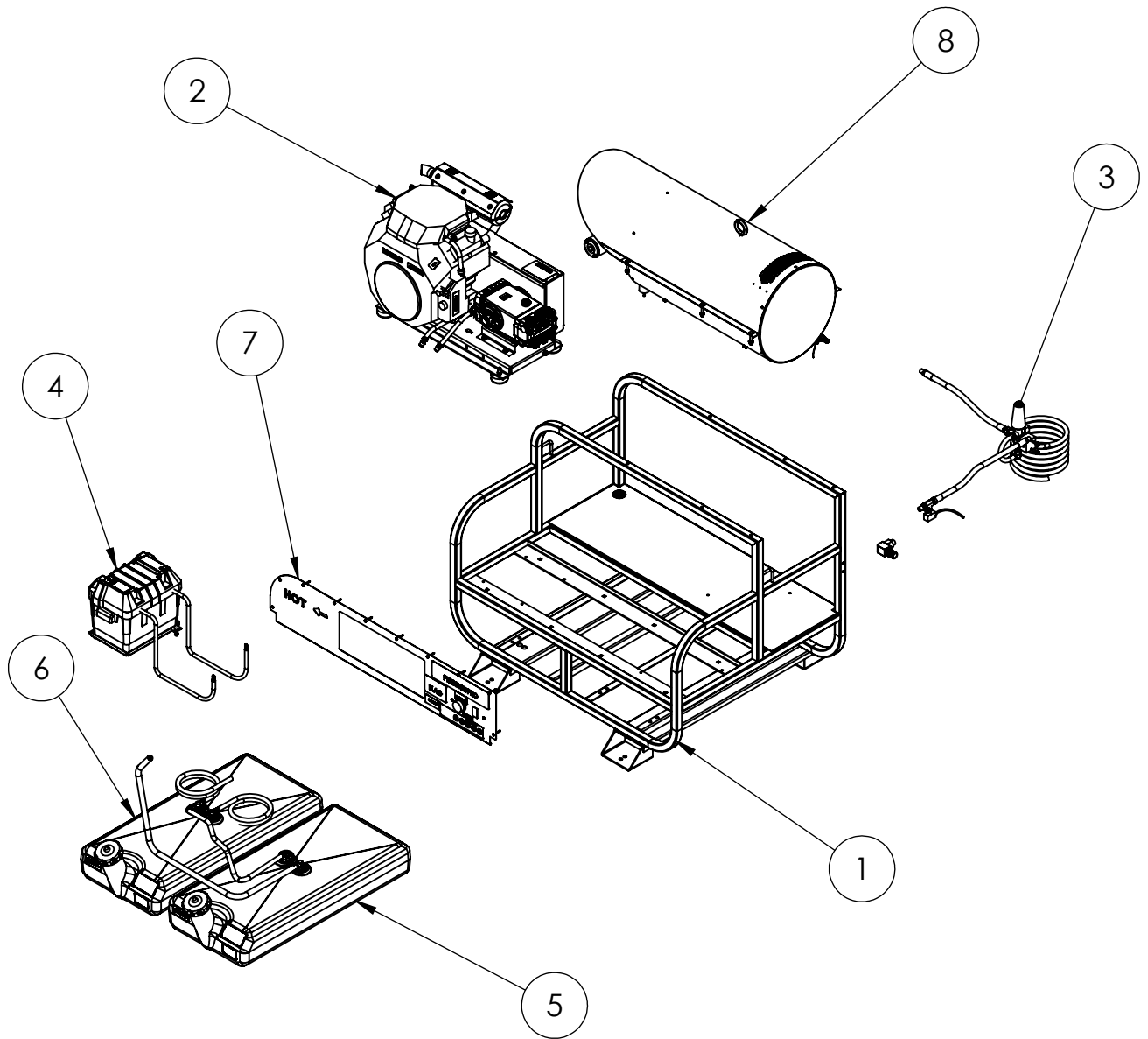
**ALWAYS USE** EYE, FACE, HAND, FOOT, HEARING, AND BODY PROTECTIVE WEAR.

**DO NOT** OPERATE PRESSURE WASHER IF FATIGUED OR UNDER THE INFLUENCE OF ALCOHOL OR DRUGS. **BE ALERT AT ALL TIMES.**

## MACHINE VARIATIONS

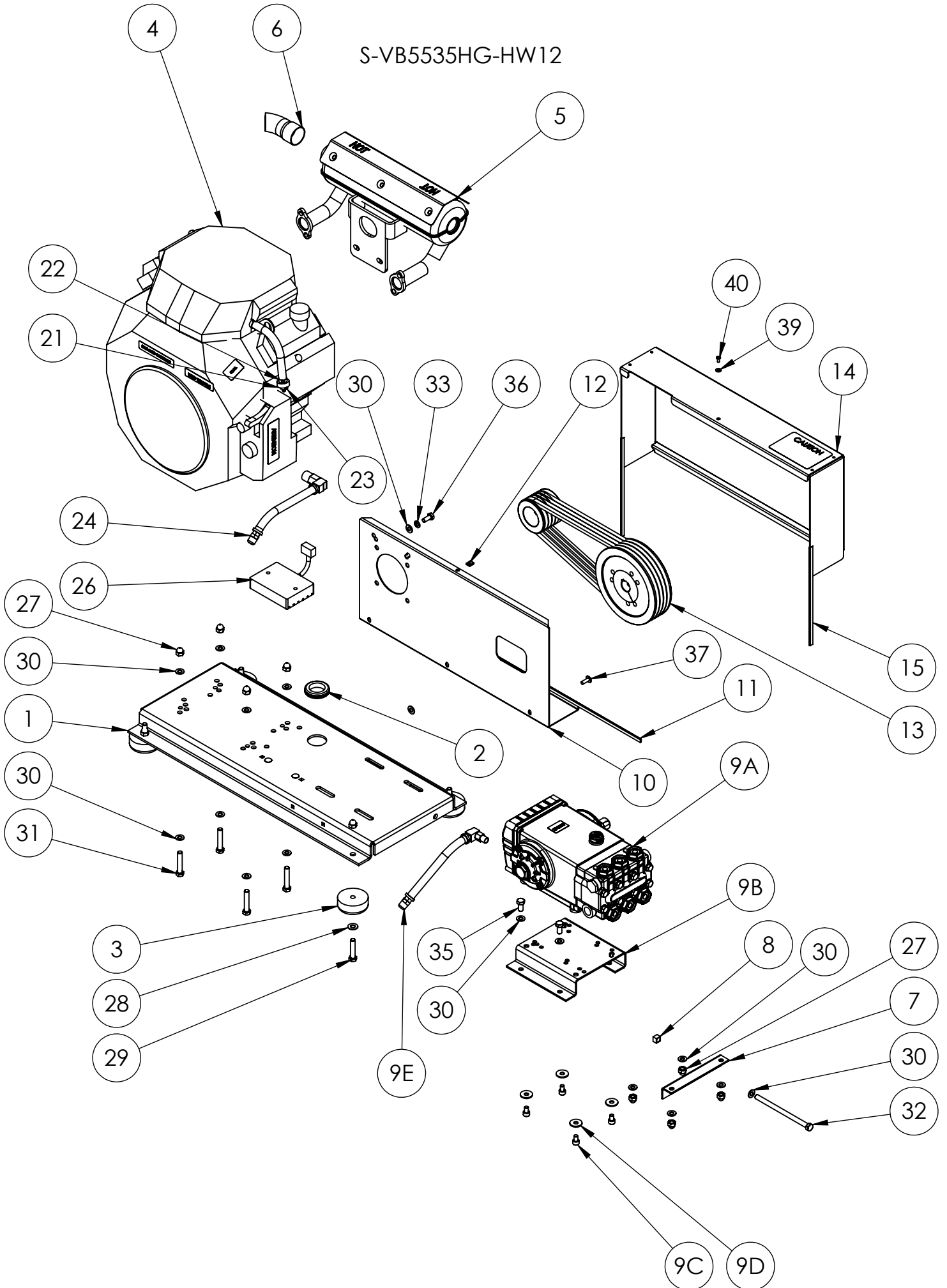
PART NUMBER	ENGINE	PUMP	COIL TANK ASSY
4012PRO-10G	GX390UTQNR2	TS1511	PP4425-80/CS
5012PRO-10G	GX390UTQNR2	TS1511	PP4425-80/CS
5012PRO-10C	GX390UTQNR2	5PP3140	PP4425-80/CS
5012PRO-35C	GX630RQXF6	5PP3150	PP4425-80/CS
PP6012PRO-20G*	GX630RQXF6	HP5535	PP4425-80/CS
6012PRO-20G-V	356447-0270-G1	HP5535	PP4425-80/CS
6012PRO-10G	GX630RQXF6	TSP1821	PP4425-80/CS
7012PRO-40HA	GX690RHTAPP	XWA-M7G40N	PP4425-80/CS
8012PRO-30HG	GX690RHTAPP	TSF2021	PP4425-80/CS
8012PRO-35HG	GX690RHTAPP	TSF2021	PP4425-80/CS

PART NUMBER	PLUMBING KIT	DRIVE KIT	FUEL NOZZLE	SPRAY NOZZLES
4012PRO-10G	KPL460	KDR326	21489	TPK040-GPC
5012PRO-10G	KPL460	DRIVE KIT 11	21489	TPK055-GPC
5012PRO-10C	KPL460	KDR331	21489	TPK055-GPC
5012PRO-35C	KPL460	DRIVE KIT 10	2564	TPK050
PP6012PRO-20G*	KPL460	KDR400-TL	2564	TPK055-GPC
6012PRO-20G-V	KPL460	KDR400-TL	2564	TPK055-GPC
6012PRO-10G	KPL460	KDR400-TL	2564	TPK055-GPC
7012PRO-40HA	KPL160	DRIVE KIT 10	2564	TPK070
8012PRO-30HG	KPL160	KDR420	2564	TPK090
8012PRO-35HG	KPL160	KDR430	2564	TPK085



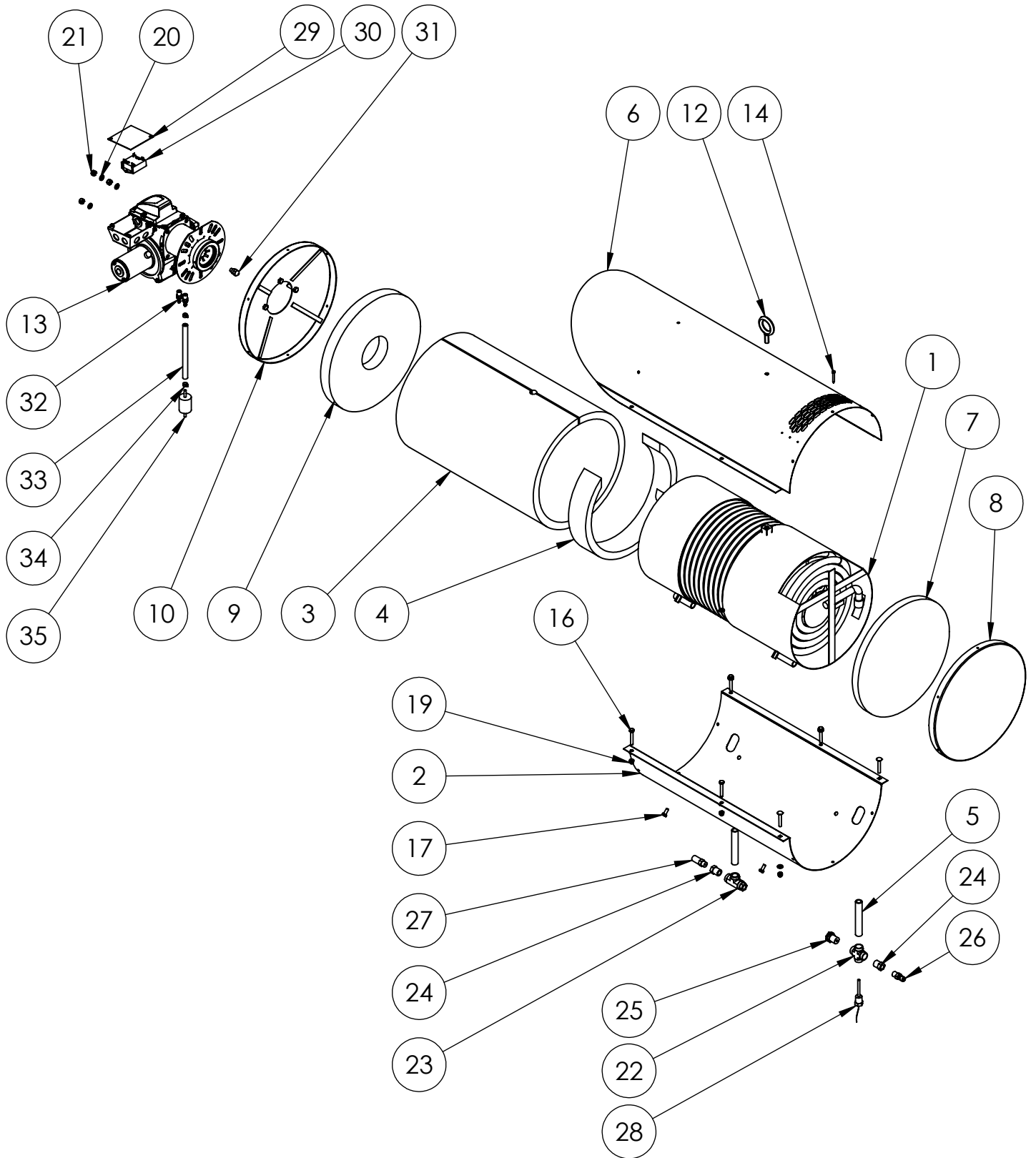
ITEM NO.	PART NUMBER	DESCRIPTION	QTY.
1	#P7000-F	BASE, SUPER SKID	1
2	#S-VB5535HG-HW12	MOTOR PUMP ASSY	1
3	#KPL460	KIT, PLUMBING, VRT3-310 SUPER SKID	1
4	#KEL025	KIT, BATTERY WIRING	1
5	#819143AE	12 GAL GASOLINE TANK, RED	1
6	#819145AE	12 GAL DIESEL TANK, BLACK	1
7	#CONTROL PANEL	12V CONTROLS	1
8	PPPP4425-80/CS	COIL TANK ASSY	1

S-VB5535HG-HW12

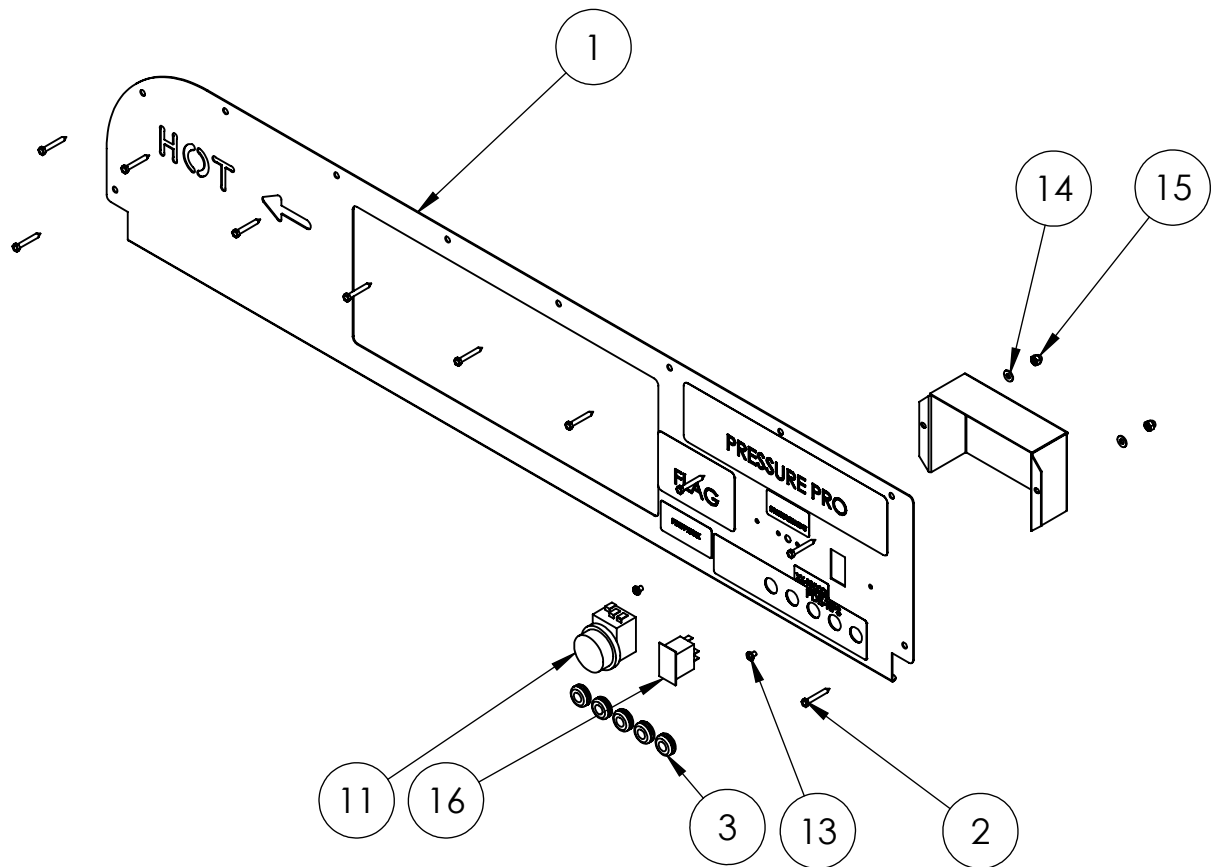


ITEM NO.	PART NUMBER	DESCRIPTION	QTY
1 #	7102-F	BASE, FLANGED, SUPER SKID 12V, W / COATING	1
2 #	99-424	RUBBER GROMMET, 3/16 MATERIAL	1
3 #	613	2-1/2" RUBBER FOOT	4
4	P.O.A.	ENGINE, HONDA GX630, 20 AMP CHARGING SYSTEM	1
5 #	MFL051	MUFFLER, OIL FILTER SIDE DISCHARGE	1
6 #	PCA450	EXTENSION, EXHAUST, 45 DEG	1
7 #	5154	BRACKET, PUMP TENSIONER, 115V MAGNUM	1
8 #	11544419	CAPTIVE NUT, 3/8-16	1
9A #	TSS1021SG	PUMP, 4.5 GPM, 1125 RPM	1
9B #	5104	PUMP BRACKET,MAGNUM CW BELT DRIVE	1
9C #	005 933 008 020	M8-1.25 X 20MM	4
9D #	111 037 500 100	FLAT WASHER,3/8	4
9E #	AOD035	OIL DRAIN ASSY, GENERAL VB	1
10 #	5157	BELTGUARD BACK,MAGNUM 12V SKID	1
11 #	EGB 5-16_21.5	TRIM-LOC, 16.8"	1
12 #	1807D	TINNERMAN NUT, #10, UAB	1
13 #	KDR400-TL	KIT, DRIVE, TAPER LOCK	1
14 #	5158	BELT GUARD, 12V MAGNUM SKID	1
15 #	EGB 5-16	TRIM-LOC, 9.8"	2
16 #	PDE-C050	DECAL, CAUTION, GAS UNIT	1
17 #	PDE-FIXED	DECAL, FIXED THROTTLE	1
18 #	PDE-CARB	DECAL, NON-CARB COMPLIANT	1
19 #	PDE-BATTERY	DECAL, BATTERY NOT CONNECTED	1
20	PP 3284-2503 (6")	HOSE, LOCKON, 3/8"	1
21 #	33406B	UNION, 3/8 X 1/4 POLY, RED	1
22 #	12688	SPRING CLAMP, 11/16	2
23 #	12685	SPRING CLAMP, 9/16	1
24 #	AOD016	OIL DRAIN ASSY, V TWIN HONDA	1
25 #	PDE-STA	DECAL, STABIL	1
26 #	31750-Z2E-803	RECTIFIER, HONDA 20 AMP	1
27 #	130 061 600 000	NYLOCK NUT, USS, 3/8-16	12
28 #	111 037 500 100	FLAT WASHER, USS, 3/8	4
29 #	105 061 601 750	HHCS USS 3/8-16 X 1-3/4	4
30 #	111 031 200 100	FLAT WASHER, USS, 5/16	29
31 #	105 061 602 000	HHCS, USS, GR5, 3/8 X 2	4
32 #	155 061 606 000	BOLT, TAP, GR5, HEX, 3/8-16 X 6	1
33 #	131 031 200 100	LOCK WASHER, 5/16	3
34 #	005 933 008 025	HHCS, M8-1.25 X 25MM	2
35 #	105 061 601 000	HHCS, USS, GR5, 3/8-16 X 1	4
36 #	105 052 400 750	HHCS, SAE, GR5, 5/16-24 X 3/4	1
37 #	104 042 000 750	CARRIAGE BOLT, 1/4-20 X 3/4	3
38 #	130 042 000 000	NYLOCK NUT, USS 1/4-20	5
39 #	1314D	WASHER, #10, NYLON	1
40 #	1317D	MACHINE SCREW, PHILLIPS HEAD, #10 X 3/8	1
41 #	005 933 006 030	METRIC CAP SCREW, M6 X1 X 30	1
42 #	104 042 001 500	CARRIAGE BOLT, 1/4-20 X 1 1/2"	2
43 #	121 025 001 250	WASHER, FENDER, 1/4 X 1 1/4	1

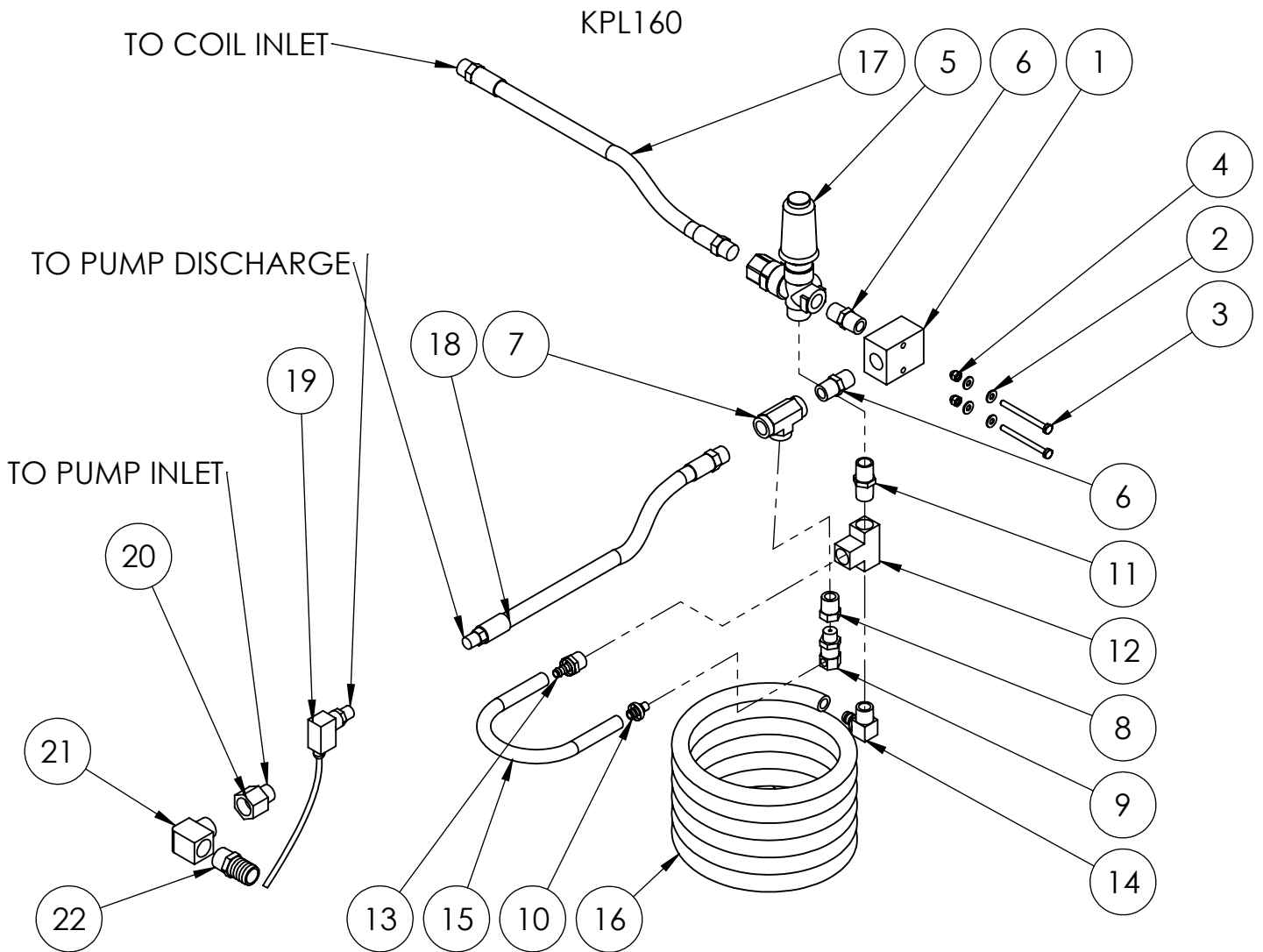
PP4425-80/CS



ITEM NO.	PART NUMBER	DESCRIPTION	QTY
1 #	4425-80WB	COIL, 5 PANCAKE, SCH 80, W/ COUPLING NUTS	1
2 #	7062	CLAMSHELL, LOWER, 16"	1
3	PP LKE06052T-24	INSULATION BLANKET, 8 LB, 24"	1
4	PP LKE06052T	INSULATION BLANKET, 8LB, 3"	1
5 #	0451	NIPPLE, 5" X SCH 160	2
6 #	7061	CLAMSHELL, UPPER, 16"	1
7	PP LKE05609T	INSULATION, EXHAUST HEAD, 16" X 1", 6 LB	1
8 #	7063-F	TANK HEAD, EXHAUST END, 16"	1
9	PP LKE06052T	INSULATION, BURNER HEAD, 8 LB, 16" X 1.5"	1
10 #	7064-F	TANK HEAD, BURNER END, 16" F&D	1
11 #	7060B	COIL ALIGNMENT BLOCK	1
12 #	1106	EYE BOLT, 3/8" X 1	1
13 #	PRO101 PW3012 WIRE 2.5	BURNER HEAD	1
14 #	203 141 470 750	SCREW, DRILL-TAPPING, 14 X 3/4	12
15 #	104 051 802 000	CARRIAGE BOLT, 5/16-18 X 2	2
16 #	105 051 802 000	HHCS,USS, GR5 5/16 X 2	4
17 #	105 051 800 750	HHCS, GR5, USS, 5/16-18 x 3/4	4
18 #	111 031 200 100	FLAT WASHER, USS, 5/16	14
19 #	130 051 800 000	NUT, NYLOCK, 5/16-18	6
20 #	131 037 500 100	LOCK WASHER, 3/8	3
21 #	130 061 600 000	NYLOCK NUT, USS, 3/8-16	3
22 #	5652-08-08-08-08	CROSS, HP, 8FPT	1
23 #	5605-08-08-08	T, HP, 8FPTX8FPTX8FPT	1
24 #	5406-08-06	HEX BUSHING, HP, 8MPX6FP	3
25	PP RD-6500	RUPTURE DISK, LA MOT, 6500#, 250 F	1
26 #	D10009	QC PLUG, 3/8 MALE	1
27	PP22533A-4600	VALVE, POP OFF, 3/8 MPT	1
28	PP 100538	THERMOSTAT, 250 DEGREES F	1
29 #	050169007525	4 X 4 COVER	1
30 #	PW3012	LOW VOLTAGE INHIBITOR	1
31	PP 2564	NOZZLE, FUEL, 2.5 GPH, 80 DEG	1
32 #	272-04-04	HOSE BARB, 1/4M PUSH ON	2
33 #	4290-0103	HOSE, FUEL, BLACK	9 FT
34 #	12685	SPRING CLAMP, 9/16	2
35 #	33001	FUEL FILTER, 1/4", UNIVERSAL	1
36 #	12/3/SJ	WIRE, 3 WIRE, SJ	16 FT

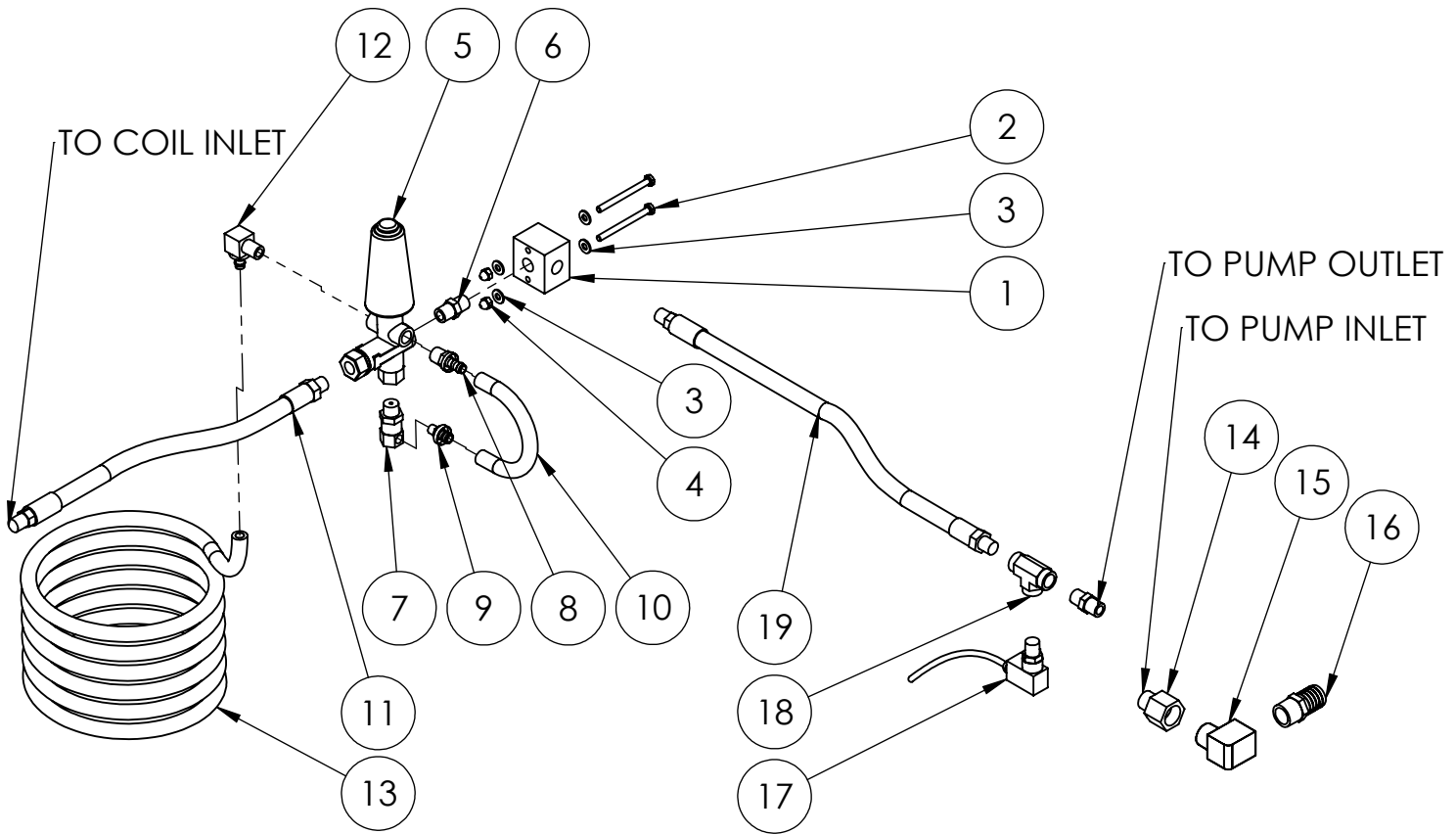


ITEM NO.	PART NUMBER	DESCRIPTION	QTY
1	#PCA775-28	PANEL, SWITCH, SS, SUPER SKID	1
2	#203 101 670 750	DRILL SCREW, #10 X 3/4"	10
3	#2860	GROMMET, BLACK FOR 1/8 METAL	5
4	#PDE-LIFT HERE	LABEL, LIFT HERE	1
5	#PDE-FLAG	DECAL, FLAG	1
6	#PDE-PXXXX	DECAL, PRESSURE	1
7	#PDE-L100	DECAL, LOGO, LARGE	1
8	#PDE-TIPS	DECAL, MULTI COLOR, TIPS	1
9	#PDE-INCREASE HEAT	DECAL, INCREASE HEAT	1
10	#PDE-S_N	DECAL, SERIAL NUMBER	1
11	#PP 100538 (2)	THERMOSTAT, 250 DEGREE	1
12	#PCA775-29	BOX, ELECTRICAL COVER, SS, SUPER SKID	1
13	#893 102 420 750	SCREW, PAN HEAD, PH, 10-24 X 3/4" SS	2
14	#801 001 000 000	WASHER, #10, SS	2
15	#830 102 400 000	NYLOCK NUT, 10-24, SS	2
16	PP F04-00701	SWITCH, LIGHTED ROCKER, 12V, RED LENSE	1



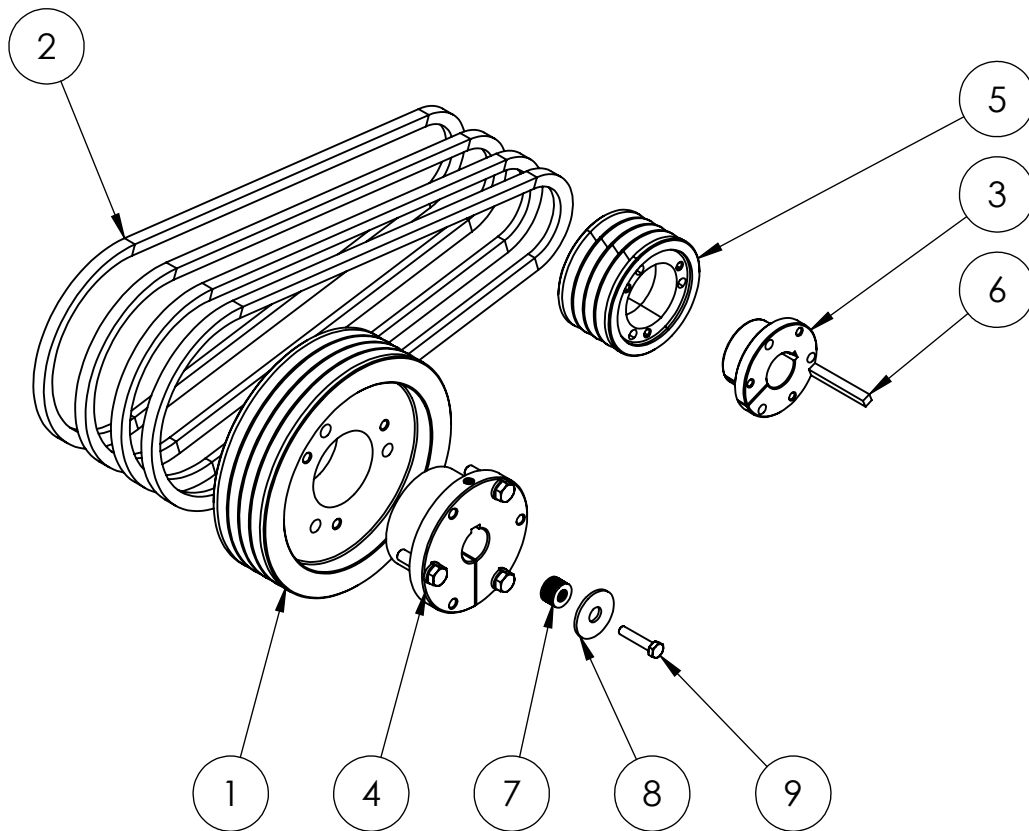
ITEM NO.	PART NUMBER	DESCRIPTION	QTY
1	# MB-5050	MANIFOLD BLOCK, 1/2 X 1/2	1
2	# 111 025 000 100	FLAT WASHER, USS, 1/4	4
3	# 105 042 003 000	HHCS, 1/4-20 X 3"	2
4	# 130 042 000 000	NYLOCK NUT, USS 1/4-20	2
5	# YVB4021B	UNLOADER VALVE, 21 GPM @ 4050PSI	1
6	# 5404-08-08	HEX NIPPLE, HP 8MP X 8MP	2
7	# 5605-08-08-08	T, HP, 8FPTX8FPTX8FPT	1
8	# 5406-08-06	HEX BUSHING, HP, 8MPX6FP	1
9	PP YESTVALVE	E-Z START VALVE	1
10	PP 272-06-02	HOSE BARB, PUSH ON, 3/8 X 1/8 MPT	1
11	# 3325-08-08	HEX NIPPLE, 1/2"	1
12	# 3700-08-08-08	T, FEMALE, 1/2"	1
13	# 272-06-08	MALE PO HOSE BARB 1/2 MPT X 3/8 HOSE	1
14	# 27290-08-08	HOSE BARB, PUSH ON, EL, 1/2 X 1/2 MPT	1
15	PP 3284-2503	HOSE, LOC-ON, 3/8", 1 FT	1
16	# 3284-2504(10FT)	HOSE, LOCK ON, 1/2", 8LOLA PLUS	1
17	# HOS500-024-8MPX-2	HOSE ASSY, 1/2 X 24", 4000 PSI, 8MPX X 8MPX	1
18	# HOS500-016-8MPX6MP	HOSE ASSY, 1/2" X 16", 4000 PSI, 8MPX X 6MP	1
19	PP YPRESSWITCH1535	PRESSURE SWITCH, 360 PSI	1
20	# 3200-12-08	ADAPTER, 3/4 FPT X 1/2 MPT	1
21	# 3400-12-12	ST ELL, 90 DEG, 3/4"	1
22	# BM-1612	NIPPLE, BRASS HOSE, 1" BARB X 3/4 MPT	1

# KPL460



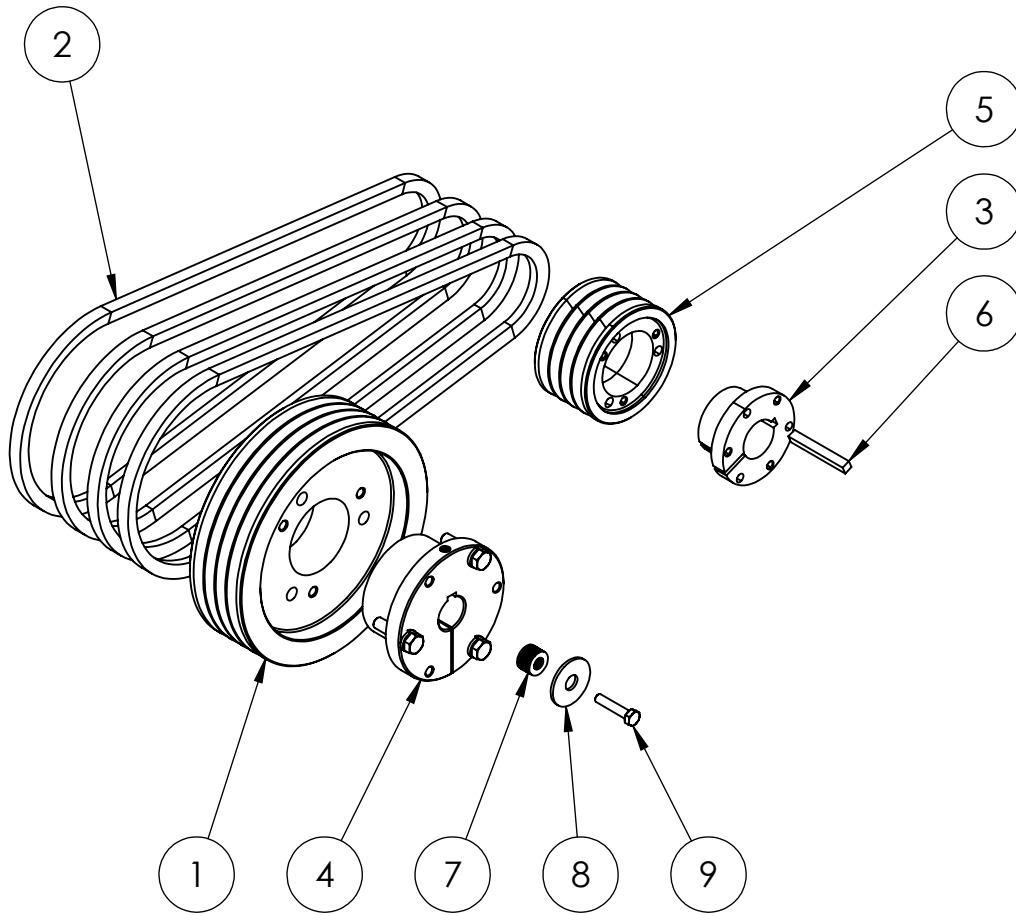
ITEM NO.	PART NUMBER	DESCRIPTION	QTY
1	# MB-3838S	MANIFOLD BLOCK, 3/8X3/8 (SHORT)	1
2	# 105 042 003 000	HHCS, 1/4-20 X 3"	2
3	# 111 025 000 100	FLAT WASHER, USS, 1/4	4
4	# 130 042 000 000	NYLOCK NUT, USS 1/4-20	2
5	PP VRT3-310	AR UNLOADER, 4500 PSI	1
6	# 5404-06-06	HEX NIPPLE, HP 6MP X 6MP	2
7	PP YESTVALVE	E-Z START VALVE	1
8	# 272-06-06	MALE PO HOSE BARB 3/8MPT X 3/8	1
9	PP 272-06-02	HOSE BARB, PUSH ON, 3/8 X 1/8 MPT	1
10	PP 3284-2503 (.75 FT)	HOSE, LOCK-ON, 3/8, 6LOLA PLUS	1
11	# HOS300-024(1)	HOSE ASSY, 3/8 X 24", 5000 PSI	1
12	# 27290-06-06	HOSE BARB, PUSH ON, EL, 3/8 X 3/8 MPT	1
13	PP 3284-2503 (10FT)	HOSE, LOCK-ON, 3/8" 6LOLA PLUS	1
14	# 3200-12-08	ADAPTER, 3/4 FPT X 1/2 MPT	1
15	# 3400-12-12	ST ELL, 90 DEG, 3/4"	2
16	# BM-1612	NIPPLE, BRASS HOSE, 1" BARB X 3/4 MPT	1
17	PP YPRESSWITCH1535	PRESSURE SWITCH, 360 PSI	1
18	# 5605-06-06-06	T, HP, 6FPTX6FPTX6FPT	1
19	# HOS300-016(3)	HOSE ASSY, 3/8 X 16", 5000 PSI	1

## DRIVE KIT 11



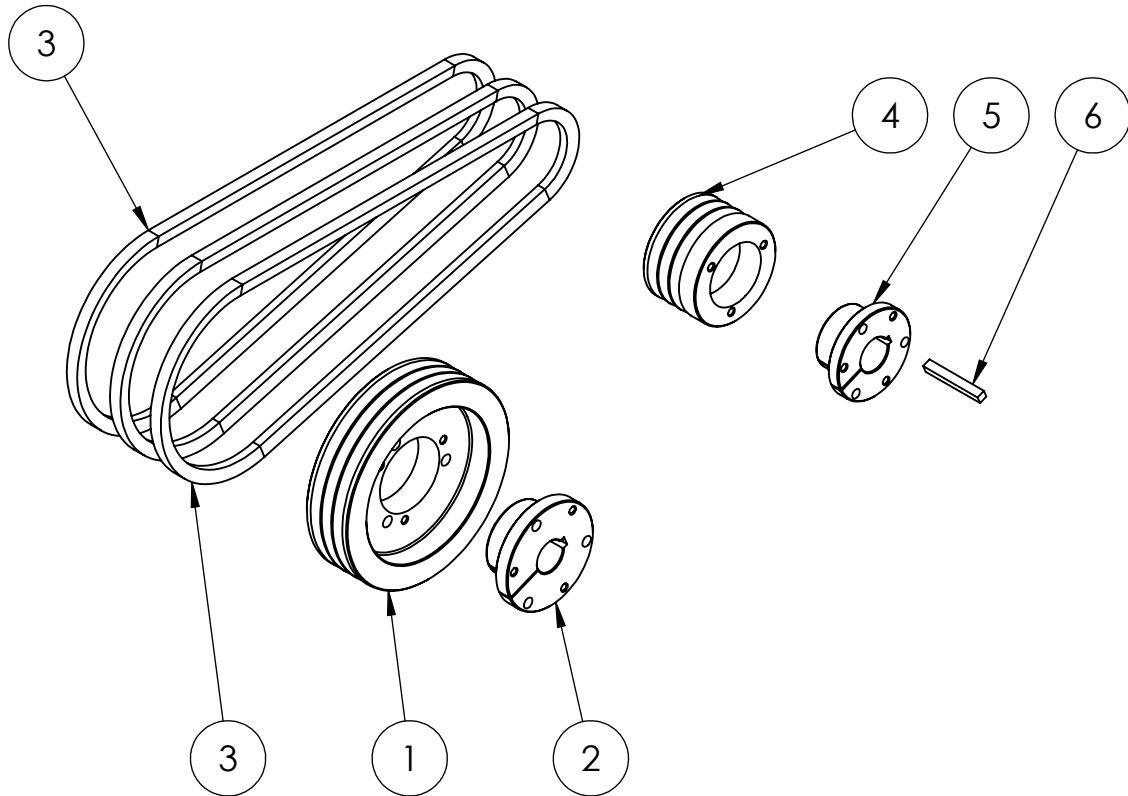
ITEM NO.	PART NUMBER	DESCRIPTION	QTY
1	4-3V600 SK	PULLEY, 4GROOVE, 3V, 6.90" DIA.	1
2	3VX400	V BELT SUPER HC, 40"	4
3	SH-1	BUSHING, SH, 1.00" DIA	1
4	SK-24MM	BUSHING, SK, 24MM	1
5	4-3V3.00	SHEAVE, 4 GR, 3.35" DIA, SH STYLE	1
6	PKY020	KEY, DRIVE, 1/4 X 2	1
7	111 031 200 100	FLAT WASHER, USS, 5/16	7
8	121 025 001 250	WASHER, FENDER, 1/4 X 1 1/4	1
9	005 933 006 030	METRIC CAP SCREW, M6 X1 X 30	1

## DRIVE KIT 10



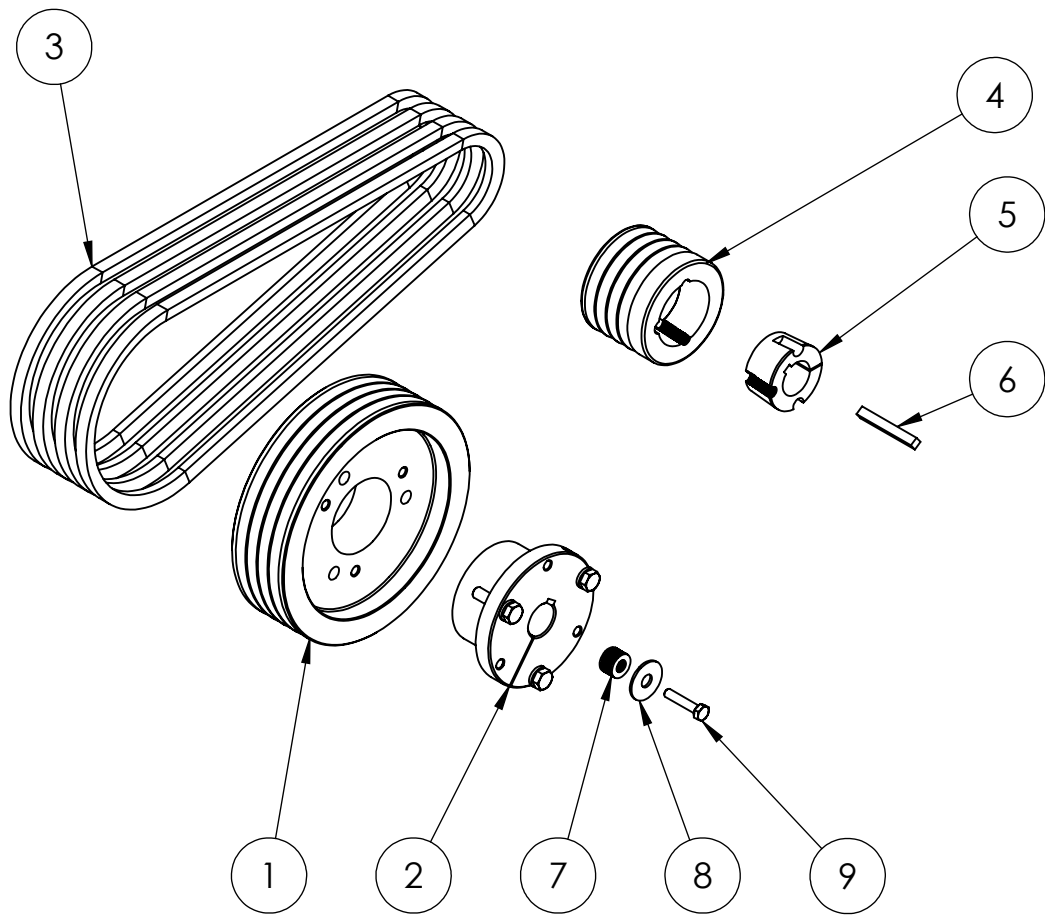
ITEM NO.	PART NUMBER	DESCRIPTION	QTY
1	4-3V600 SK	PULLEY, 4GROOVE, 3V, 6.90" DIA.	1
2	3VX400	V BELT SUPER HC, 40"	4
3	SHX1-1_8	BUSHING, SH STYLE, 1 1/8" BORE	1
4	SK-24MM	BUSHING, SK, 24MM	1
5	4-3V3.00	SHEAVE, 4 GR, 3.35" DIA, SH STYLE	1
6	PKY020	KEY, DRIVE, 1/4 X 2	1
7	111 031 200 100	FLAT WASHER, USS, 5/16	7
8	121 025 001 250	WASHER, FENDER, 1/4 X 1 1/4	1
9	005 933 006 030	METRIC CAP SCREW, M6 X1 X 30	1

# KDR331



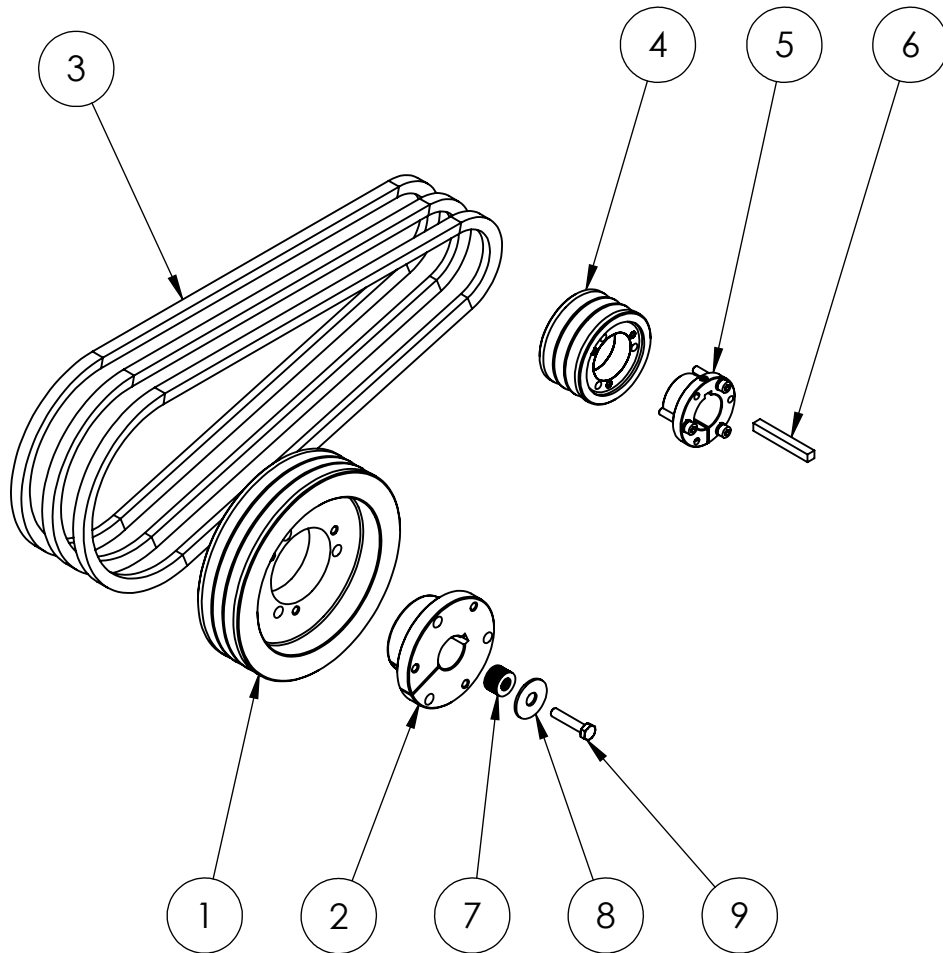
ITEM NO.	PART NUMBER	DESCRIPTION	QTY
1	3-3V600 SDS	SHEAVE, 3VX, 3GR.6.00 DIA	1
2	SDS-20MM	BUSHING, 20MM, SDS	1
3	3VX400	V BELT SUPER HC, 40"	3
4	3_3V300 SH	SHEAVE, 3VX, 3GR, 3.00 DIA	1
5	SH-1	BUSHING, SH, 1.00" DIA	1
6	PKY020	KEY, DRIVE, 1/4 X 2	1

# KDR400-TL



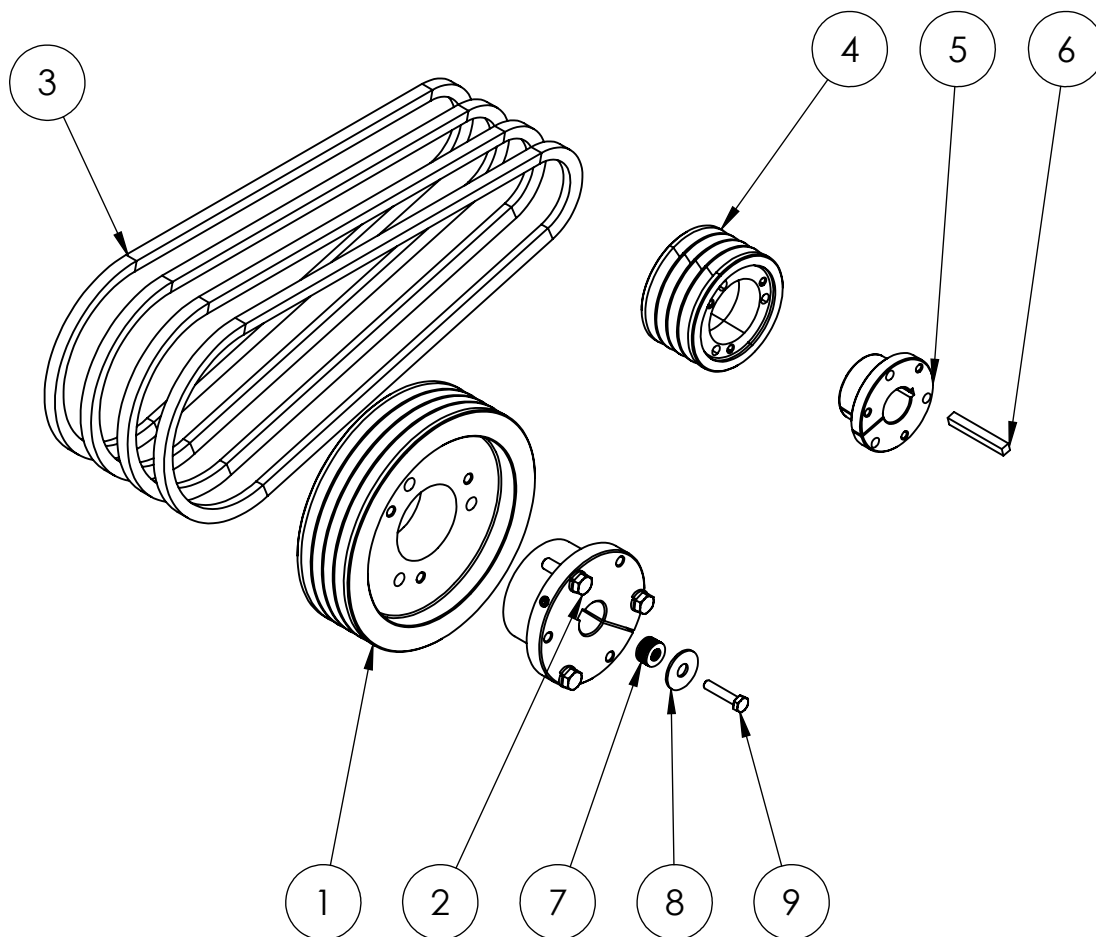
ITEM NO.	PART NUMBER	DESCRIPTION	QTY
1	4-3V690 SK	PULLEY, 4GROOVE, 3V, 6.90" DIA.	1
2	SK-24MM	BUSHING, SK, 24MM	1
3	3VX425	V BELT SUPER HC, 42.5"	4
4	4-3V3.00-1210	SHEAVE, 4 GR, 3.00 DIA, 1210 STYLE	1
5	1210-1	BUSHING, 1" BORE, TAPER LOCK	1
6	PKY020	KEY, DRIVE, 1/4 X 2	1
7	111 031 200 100	FLAT WASHER, USS, 5/16	7
8	121 031 201 500	FENDER WASHER, 5/16 X 1 1/2	1
9	005 933 006 030	METRIC CAP SCREW, M6 X1 X 30	1

# KDR326



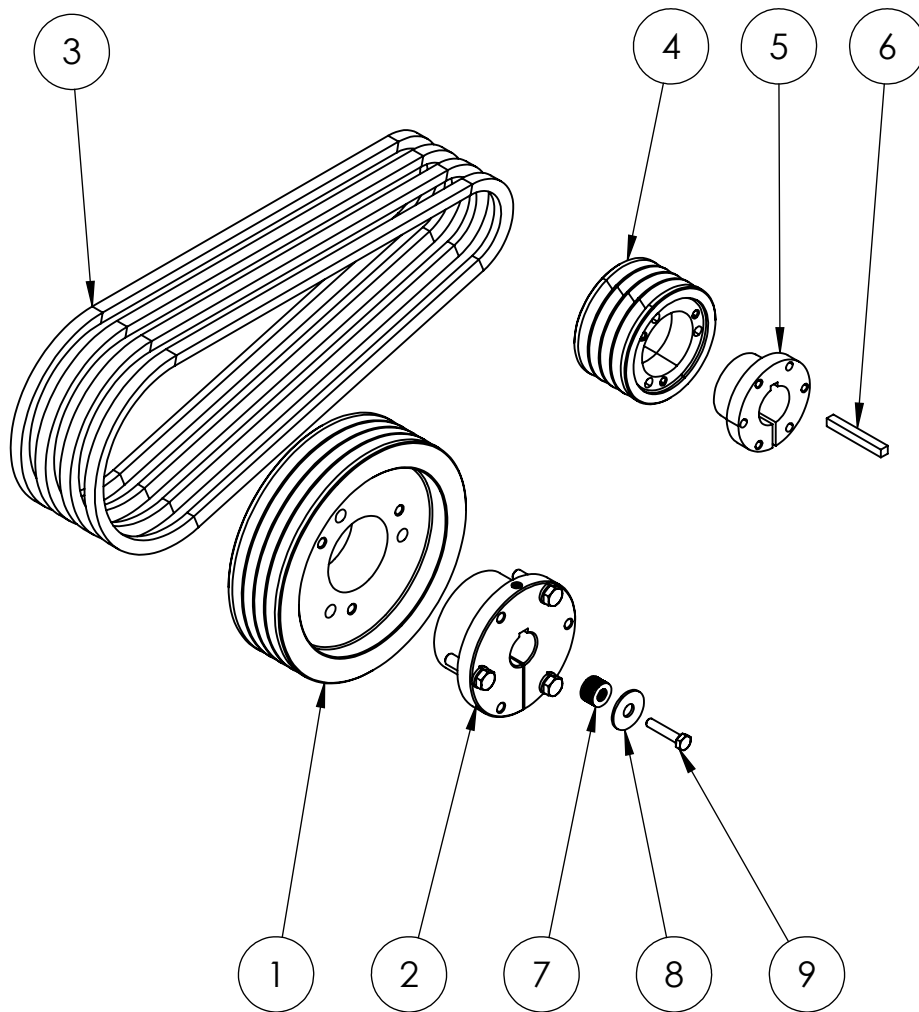
ITEM NO.	PART NUMBER	DESCRIPTION	QTY
1	3-3V600 SDS	SHEAVE, 3VX, 3GR.6.00 DIA	1
2	SDS-24MM	BUSHING, 24MM,	1
3	3VX400	V BELT SUPER HC, 40"	3
4	3-3V2.65	SHEAVE, 2.65" OD, 3GR, JA STYLE	1
5	JA-1	BUSHING, 1", JA	1
6	PKY020	KEY, DRIVE, 1/4 X 2	1
7	111 031 200 100	FLAT WASHER, USS, 5/16	7
8	121 031 201 500	FENDER WASHER, 5/16 X 1 1/2	1
9	005 933 006 030	METRIC CAP SCREW, M6 X1 X 30	1

# KDR420



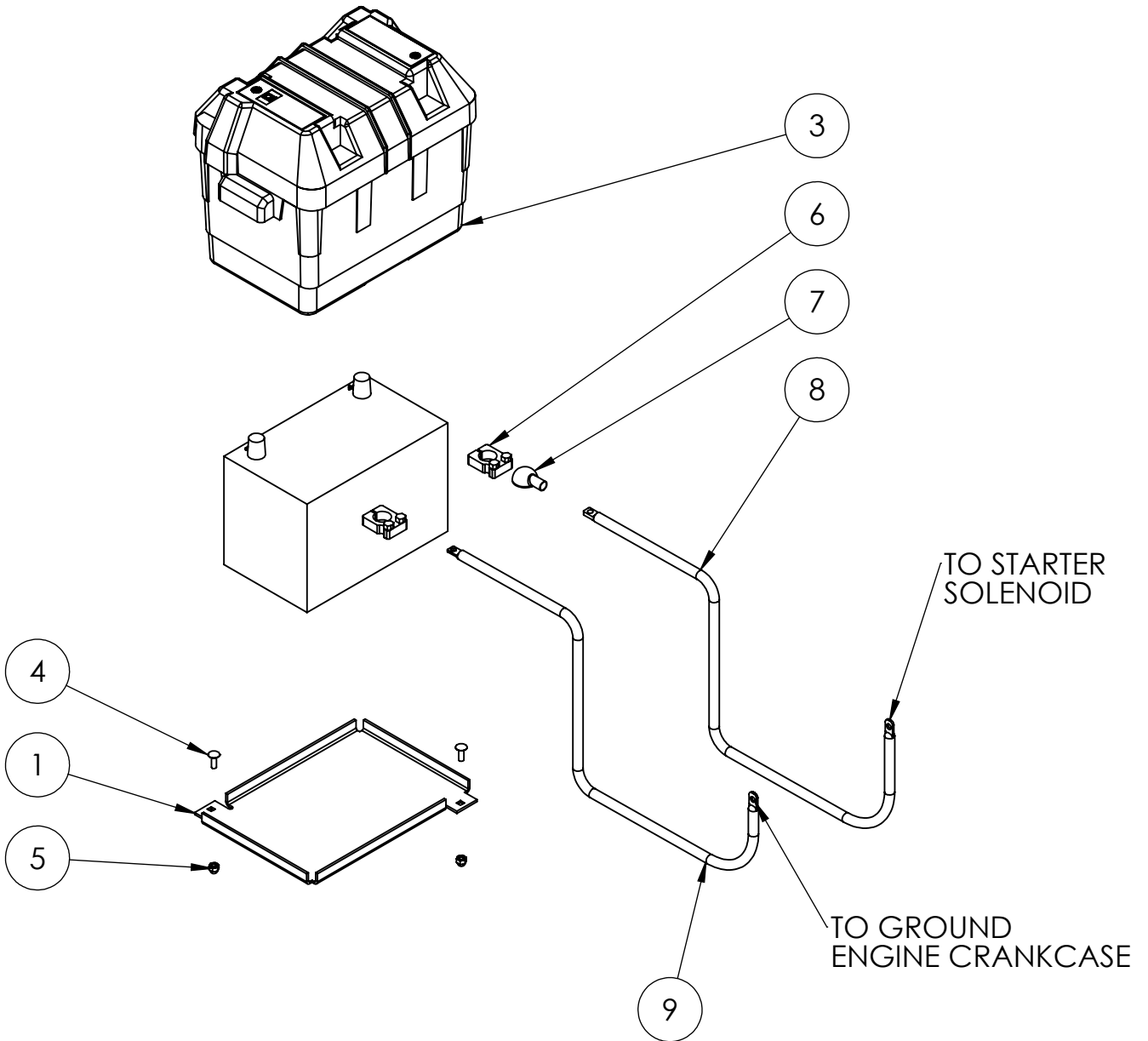
ITEM NO.	PART NUMBER	DESCRIPTION	QTY
1	4-3V690 SK	PULLEY, 4GROOVE, 3V, 6.90" DIA.	1
2	SK-24MM	BUSHING, SK, 24MM	1
3	3VX425	V BELT SUPER HC, 42.5"	4
4	4-3V3.35	SHEAVE, 4 GR, 3.35" DIA, SH STYLE	1
5	SH-1	BUSHING, SH, 1.00" DIA	1
6	PKY020	KEY, DRIVE, 1/4 X 2	1
7	111 031 200 100	FLAT WASHER, USS, 5/16	7
8	121 031 201 500	FENDER WASHER, 5/16 X 1 1/2	1
9	005 933 006 030	METRIC CAP SCREW, M6 X1 X 30	1

# KDR430

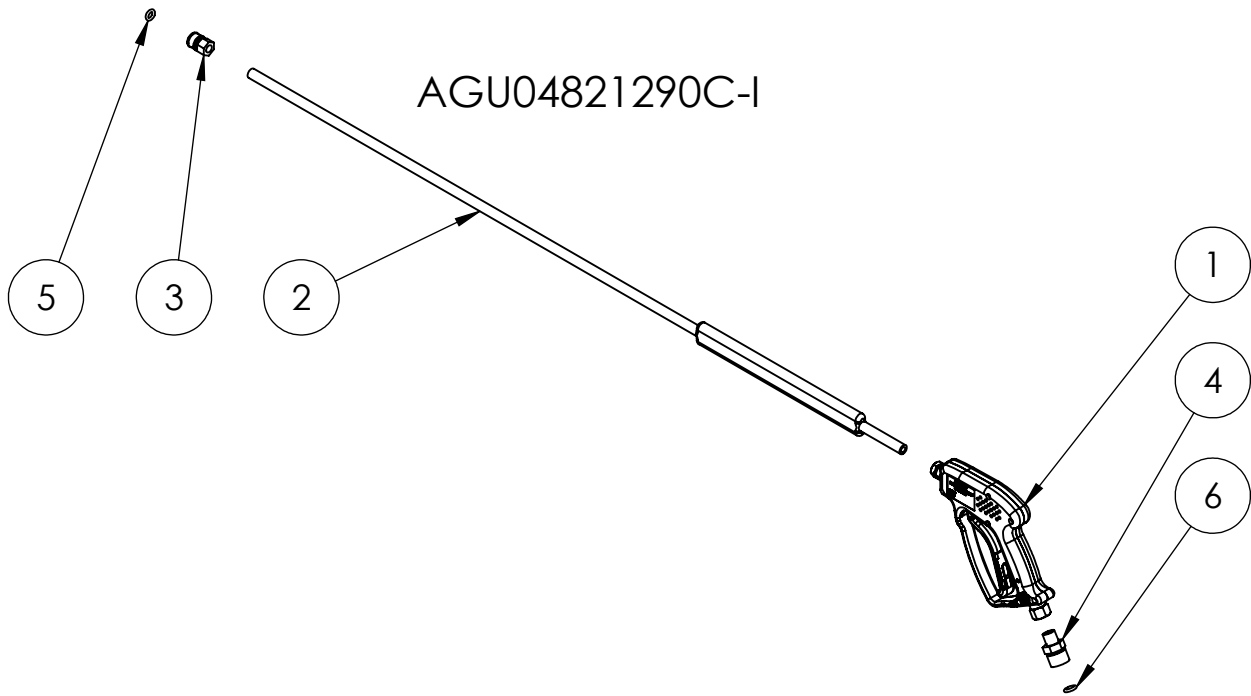


ITEM NO.	PART NUMBER	DESCRIPTION	QTY
1	4-3V690 SK	PULLEY, 4GROOVE, 3V, 6.90" DIA.	1
2	SK-24MM	BUSHING, SK, 24MM	1
3	3VX425	V BELT SUPER HC, 42.5"	4
4	4-3V3.35	SHEAVE, 4 GR, 3.35" DIA, SH STYLE	1
5	SHX1-1_8	BUSHING, SH STYLE, 1 1/8" BORE	1
6	PKY020	KEY, DRIVE, 1/4 X 2	1
7	111 031 200 100	FLAT WASHER, USS, 5/16	7
8	121 031 201 500	FENDER WASHER, 5/16 X 1 1/2	1
9	005 933 006 030	METRIC CAP SCREW, M6 X1 X 30	1

# KEL025

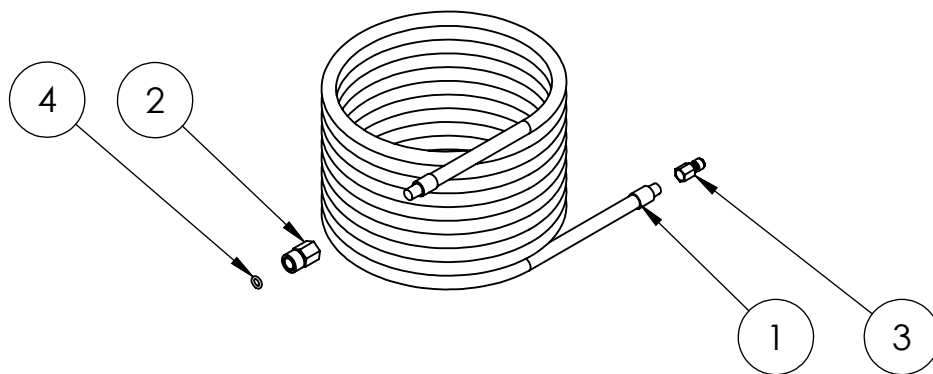


ITEM NO.	PART NUMBER	DESCRIPTION	QTY
1	9879	TRAY, BATTERY BOX, LARGE, GROUP 24	1
2	VL58	BATTERY	1
3	9065-1	BOX, BATTERY, LARGE, (GP24)	1
4	104 042 000 750	CARRIAGE BOLT, 1/4-20 X 3/4	2
5	130 042 000 000	NYLOCK NUT, USS 1/4-20	2
6	00369	TERMINAL, UNIVERSAL BATTERY	2
7	5719-025R	TERMINAL PROTECTOR, RED, 6 GA	1
8	PRO40	CABLE, BATTERY, 6AWG, RED, 40"	1
9	PRO35	CABLE, BATTERY, 6AWG, BLACK, 35"	1

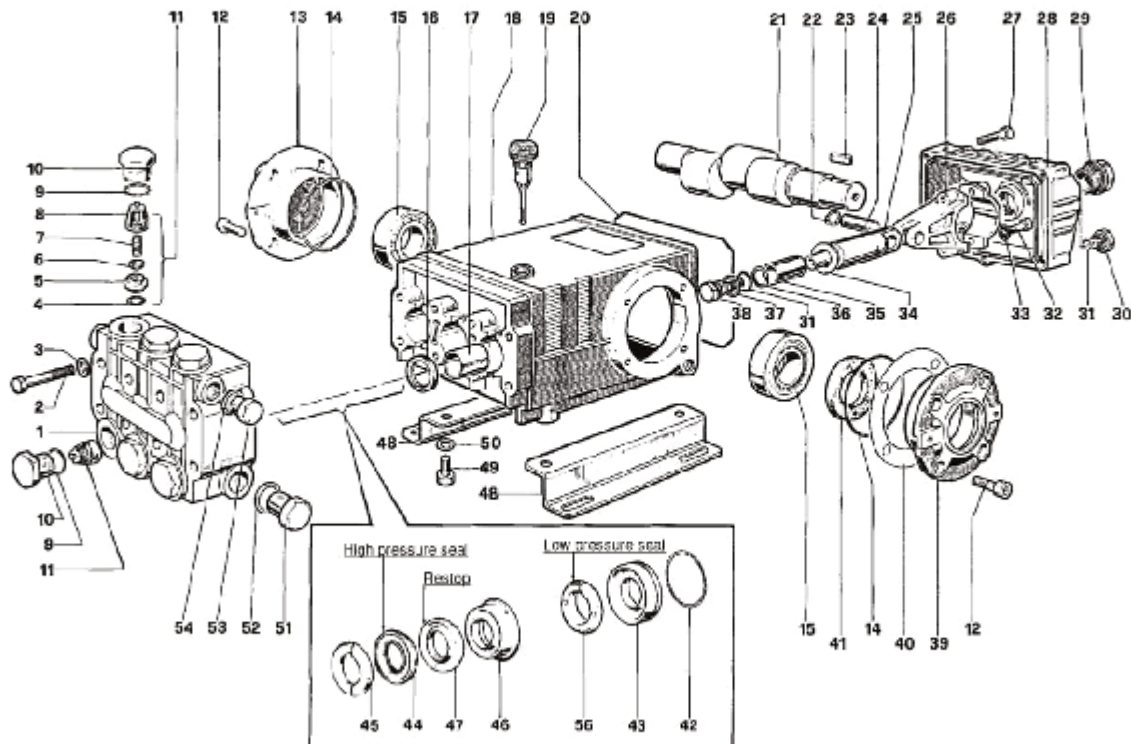


ITEM NO.	PART NUMBER	DESCRIPTION	QTY
1	21290C	GUN VALVE, 10 GPM, 5000 PSI	1
2	DL471CS	WAND, PLATED STEEL, 48", INSULATED GRIP	1
3	D10001	QC SOCKET 1/4 FEMALE	1
4	D10004	QC SOCKET, 3/8 MALE	1
5	OR-110-VT-75-BROWN	ORING, VITON FOR 1/4" QC	1
6	OR-112-VT-75-BROWN	ORING, VITON FOR 3/8" QC	1

### CHA0501BB



ITEM NO.	PART NUMBER	DESCRIPTION	QTY
1	AF42-06BK-050LBR	HOSE ASSY, 3/8" X 50', BLACK	1
2	D10003	QC SOCKET 3/8 FEMALE	1
3	D11008	QC PLUG, 3/8 FEMALE	1
4	OR-112-VT-75-BROWN	ORING, VITON FOR 3/8" QC	1



## PARTS LIST

ITEM	PART NO.	DESCRIPTION	KIT NO.	QTY.	ITEM	PART NO.	DESCRIPTION	KIT NO.	QTY.	ITEM	PART NO.	DESCRIPTION	KIT NO.	QTY.
1.	47121741	Manifold		1	19.	96210600	Oil Dip Stick		1	37.	98728000	Washer	6	3
2.	99320600	Screw, M8 x 70		8	20.	90392200	O-ring, Cover		1	38.	47219566	Screw, Plunger	6	3
3.	96702000	Washer, M8.4		8	21.	47021735	Crankshaft, TSS1021		1	39.	47150022	Cover, Crankcase		3
4.	701115	O-ring, .674 x .10	1	8		47021835	Crankshaft, TSS1511		1	40.	97567800	Shim		2
5.	36200366	Seat, Valve	1	6	22.	90055700	Ring, Snap		6	41.	90164800	Seal, Oil	3	1
6.	36200176	Plate, Valve	1	6	23.	91499000	Key		1	42.	90361600	O-ring, 1.304x.070	10,28	3
7.	94737600	Spring	1	6	24.	97738000	Pin, Wrist		3	43.	47080570	Retainer, Packing	10,28	3
8.	36200251	Guide, Valve	1	6	25.	47050554	Guide, Plunger		3	44.	90270500	Packing	28,69	3
9.	701002	O-ring, .797x.103	4,5	6	26.	47030001	Connecting Rod		3	45.	47100051	Ring, Head, M20	7,28	3
10.	98222800	Cap	4	6	27.	99191200	Screw M6x30		5	46.	47216970	Intermed. Ring	28,71	3
11.	36703201	Valve Assembly	1	6	28.	47150122	Cover, Crankcase		1	47.	90270400	Restop Ring	28,69	71
12.	99303900	Screw, M8 x 16		8	29.	97596600	Oil Indicator		1	48.	47200074	Pump Feet		2
13.	47150122	Cover, Crankcase Side	1		30.	96204100	Cap		1	49.	99304400	Screw, M10 x 18		4
14.	701147	O-ring, 2.875x.103		2	31.	701013	O-ring, .426x.070	6	4	50.	96710600	Washer, M10.2		4
15.	640047	Bearing, Roller		2	32.	99309900	Screw M8 x 35		6	51.	98217600	Cap		1
16.	90162500	Seal, Oil	2	3	33.	96701400	Washer, M8.4		6	52.	96751400	Washer, M21.5		1
17.	90912600	Bushing		3	34.	96728600	Washer, M14	6	3	53.	98210000	Cap		1
18.	47010522	Crankcase		1	35.	47040409	Plunger, 20 mm		3	54.	98738000	Washer, M17.5		1
					36.	660067	Ring, Back-up	6	3	55.	90271000	Seal, Low Press, 20 mm	28,69	3

## REPAIR KITS

KIT NO.	K01	K02	K03	K04F	K06	K07	K10	K23	K69	K71
ITEM NO'S INCLUDED IN KIT	4,5,6 7,8 (11)	16	41	9, 10	31,34,36 37,38	45	42, 43	42, 43 44, 45 46,47,56	44, 47 56	46, 47
NUMBER OF ASSEMBLIES IN KIT	6	3	2	6	3	6	3	1	3	3
NUMBER OF CYLINDERS KIT WILL SERVICE	3	3	-	3	3	3	3	1	3	3

## TORQUE SPECS\*

Pos.	Ft/lb	N-M
2	22.1	30
10	95.9	130
12	14.7	20
27	7.3	10
29	3.8	12
30	14.7	20
32	14.7	20
38	14.7	20
49	29.4	40
51	29.4	40

\* Decrease torque by 20% if threads are lubricated

Ref 300896 Rev. D  
06-16

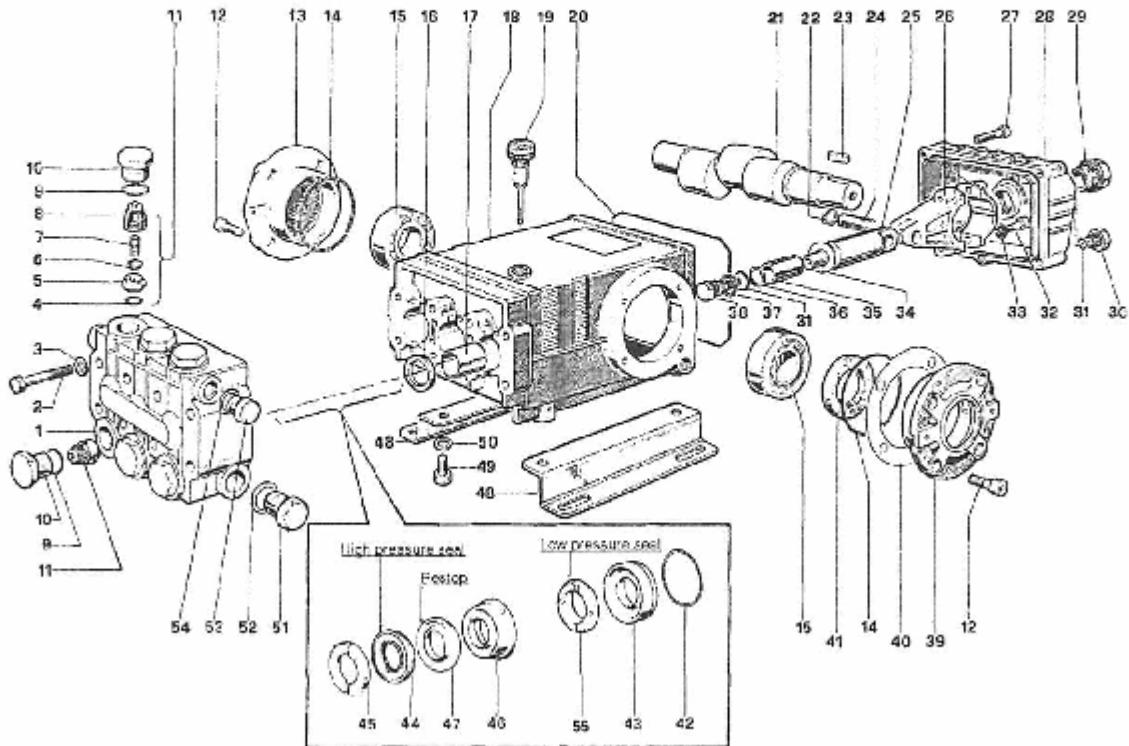
**GENERAL PUMP** 1174 Northland Drive • Mendota Heights, MN 55120  
Phone: 651.686.2199 • Fax: 800.535.1745 • e-mail: sales@gpcompanies.com • www.generalpump.com



# TSS1511



20 mm bore / 16 mm stroke



**PARTS LIST**

ITEM PART NO.	DESCRIPTION	KIT NO.	QTY.	ITEM PART NO.	DESCRIPTION	KIT NO.	QTY.	ITEM PART NO.	DESCRIPTION	KIT NO.	QTY.
1	47120841	Manifold	1	20	90392200	O-Ring, Cover	1	39	47150022	Cover, Crankcase	1
2	99320600	Screw, M8 x 70	8	21	47021735	Crankshaft	1	40	97567800	Shim	2
3	96702000	Washer, M8.4	8	22	90055700	Ring, Snap	6	41	90164800	Seal, Oil	3
4	90384100	O-Ring, .674 x .103	1	23	91489000	Key	1	42	90381800	O-Ring, 1.364 x .070	10, 28
5	36200366	Seat, Valve	1	24	97738000	Pin, Wrist	3	43	47080570	Retainer, Packing	10, 28
6	36200178	Plate, Valve	1	25	47050554	Guide Plunger	3	44	90270500	Packing	28, 68
7	94737600	Spring	1	26	47030001	Rod Connecting	3	45	47100051	Ring, Head, M20	7, 28
8	36200251	Guide, Valve	1	27	99191200	Screw, M8 x 30	5	46	47216970	Intermed. Ring	28, 71
9	90384700	O-Ring, .797 x .103	4, 5	28	47160122	Cover, Crankcase	1	47	90270400	Restop Ring	28, 68, 71
10	98222000	Cap	4	29	97596800	Oil Indicator	1	48	47200074	Pump Feet	2
11	36703201	Valve Assembly	1	30	98204100	Cap	1	49	99364400	Screw, M10 x 13	4
12	99303900	Screw, M8 x 16	8	31	90358500	O-Ring, .426 x .070	6	50	96710600	Washer, M10.2	4
13	47150122	Cover, Crankcase	1	32	99309900	Screw, M8 x 35	6	51	98217600	Cap	1
14	90391300	O-Ring, 2.675 x .103	2	33	96701400	Washer, M8.4	6	52	96751400	Washer, M21.5	1
15	640047	Bearing, Roller	2	34	96728600	Washer, M14	6	53	90210000	Cap	1
16	90162500	Seal, Oil	2	35	47040400	Plunger, (20 mm)	3	54	96738000	Washer, M17.5	1
17	90912600	Bushing	3	36	90506700	Ring, Back-up	6	55	90271000	Seal, Low Press., 20mm	28, 69
18	47010522	Crankcase	1	37	96728000	Washer	6				
19	98210600	Oil Dip Stick	1	38	47218566	Screw, Plunger	6				

**REPAIR KITS**

KIT NO.	1	2	3	4	H-F	6	7	10	29	39	71
ITEM NO.s INCLUDED IN KIT	4, 5, 6, 7, 8 (1')	16	41	9, 10	9, 10	31, 34, 35, 37, 39	45	42, 43	42, 43, 44, 45, 43, 47, 56	44, 47, 56	46, 47
NUMBER OF ASSEMBLIES IN KIT	6	3	2	6	6	3	6	3	1	3	3
NUMBER OF CYLINDERS KIT WILL SERVICE	3	3	-	3	3	3	3	3	1	3	3

**TORQUE SPECS\***

Position	Ft.-lbs.
2	22.1
10	73.7
12	14.7
27	7.3
29	13.2
30	14.7
32	14.7
38	14.7
49	29.4
51	29.4
53	26.4

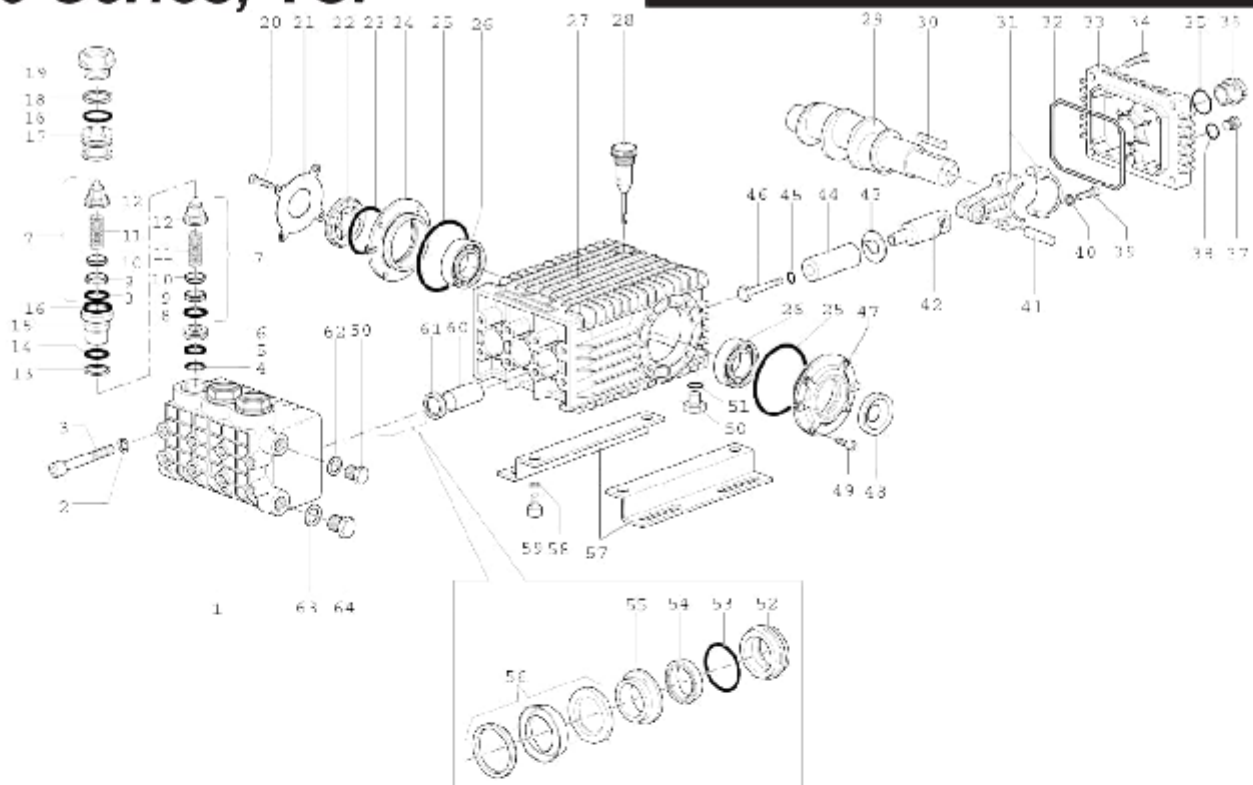
\*Decrease torque by 20% if threads are lubricated.

**Pressure-Pro** 7300 Commercial Circle, Fort Pierce, FL 34951 772-461-4486 Fax: 888-871-0365  
 e-mail: sales@pressure-pro.com web: www.pressure-pro.com

HP5535

# 66 Series, TSP

**GENERAL PUMP** A member of the Interpump Group



## REPAIR KITS

ITEM	PART NO.	DESCRIPTION	QTY.	ITEM	PART NO.	DESCRIPTION	QTY.	ITEM	PART NO.	DESCRIPTION	QTY.
1.	56121041	Manifold 16mm	1	24.	56150122	Side Cover	2	46.	56219566	Plunger Bolt	3
	56121141	Manifold 13mm	1	25.	701147	O-ring 67.95 x 2.62	2	47.	56150022	Side Cover, PTO	1
2.	96710400	Washer M1C	8	26.	91838000	Bearing	1	48.	90154800	Seal, Shaft 30 x 55 x 7	1
3.	99382000	Headbolt M10 x 120	8	27.	56010022	Crankcase	1	49.	99303900	Screw M8 x 16	4
4.	90511800	Anti-ext ring	3	28.	98210600	Dipstick, vented	1	50.	98210000	Plug 3/8 x 13	2
5.	90359600	O-ring 18.77 x 1.78	3	29.	56020435	Crankshaft TSP1621	1	51.	90383300	O-ring 13.95 x 2.62	1
6.	50210270	Spacer M12	3		56020035	Crankshaft TSP1819		52.	50090270	Seal Retainer 16mm	3
7.	36712101	Valve Assy., Complete	6	30.	91489200	Key	1		56080370	Seal Retainer 13mm	
8.	701115	O-ring 17.13 x 2.62	6	31.	56030001	Connecting Rod	3	53.	90381800	O-ring 34.65 x 1.78	3
9.	36200366	Valve Seal	6	32.	90392200	O-ring 133.02 x 2.62	1	54.	90263100	LP Seal 16mm	3
10.	36203266	Valve Poppet	6	33.	56150000	Cover, Crankcase	1		90255200	LP Seal 18mm	
11.	94737600	Valve Spring	6	34.	99188400	Screw M6 x 20	4	55.	56216270	Intermediate Ring 16mm	3
12.	36202551	Valve Guide	6	35.	90405100	O-ring 26.58 x 3.53	1		56216370	Intermediate Ring 18mm	
13.	90511500	Anti-ext ring	3	36.	53210051	Sightglass, Bayonet style	1	56.	90263400	HP Seal 15mm	3
14.	90384300	O-ring 17.86 x 2.62	3	37.	98204100	Plug, G1/4" x 9	1		90263500	HP Seal 13mm	
15.	56210166	Bushing	3	38.	90358500	O-ring 10.82 x 1.78	1	57.	47200074	Pump Rail	2
16.	90395700	O-ring 23.81 x 2.62	6	39.	99309900	Screw M8 x 35	6	58.	96710600	Washer M1C	4
17.	56210070	Plug 19mm	3	40.	96701400	Locking Washer M8	6	59.	99364400	Screw M10 x 18	4
18.	90516500	Anti-ext ring	3	41.	97740500	Wrist Fir	3	60.	90912600	Guide Bushing	3
19.	56130141	Valve Cap	3	42.	56050064	Piston Guide	3	61.	90162500	Seal, Pl. Rod 22 x 32 x 5.5	3
20.	99306900	Screw M8 x 25	4	43.	96710100	Flinger Washer	3	62.	96738000	Gasket, Aluminum 3/8"	1
21.	56150274	Cover	1	44.	56040209	Plunger 16 x 54	3	63.	96751400	Gasket, Aluminum 1/2"	1
22.	44211801	Spacer, Sightglass	1		56040309	Plunger 18 x 54		64.	98217600	Plug, G1/2" x 10	1
23.	90409700	O-ring 55.56 x 3.53	1	45.	701013	O-ring 10.82 x 1.78	3				

## REPAIR KITS

Kit No.	TORQUE SPECS*						
	K02	K03	K15066	K174 (10mm)	K175 (16mm)	K180 (16mm)	K176 (10mm)
Pos. No.s Included In Kit	61	48	8, 9, 10, 11, 12, 13, 14, 16, 18 (7)	54, 56	52, 53, 54, 55, 56	54, 56	52, 53, 54, 55, 56
Number of Assemblies In Kit	3	1	6	3	1	3	1
Number of Cylinders Kit Will Service	3	N/A	3	3	1	3	1

## TORQUE SPECS\*

Item	N-M	Ft-lbs
3	45	33.2
19	130	95.9
20	20	14.8
34	10	7.4
37	20	14.8
39	20	14.0
46**	20	14.8
49	20	14.8
50	40	29.5
59	40	29.5

\*Decrease torque by 20% if threads are lubricated.

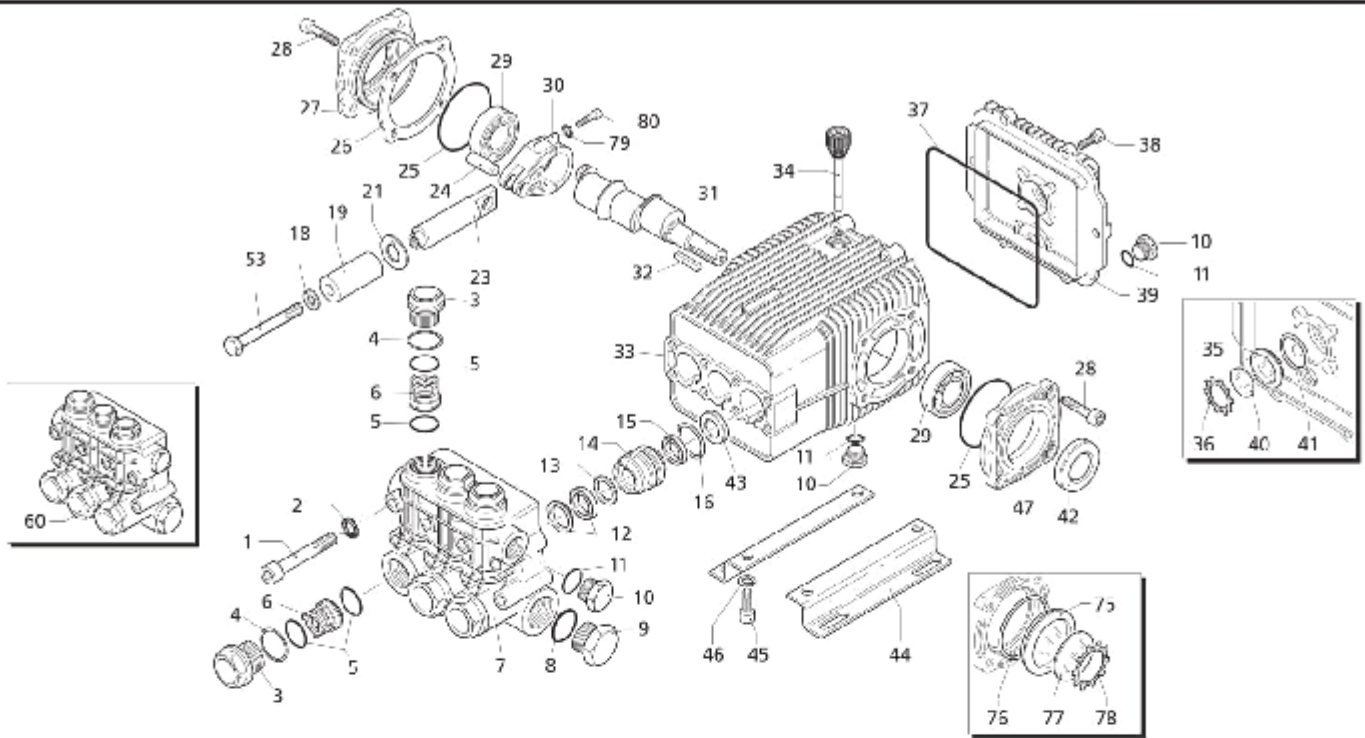
**GENERAL PUMP** 1174 Northland Drive • Mendota Heights, MN 55120

Phone: 651.686.2199 • Fax: 800.535.1745 • e-mail: sales@gpcompanies.com • www.generalpump.com

Ref 310046 Rev. K  
06-16

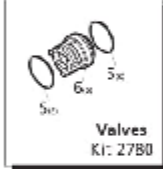


TSP1821



**Repair Kits**

**Special Parts / Kits**



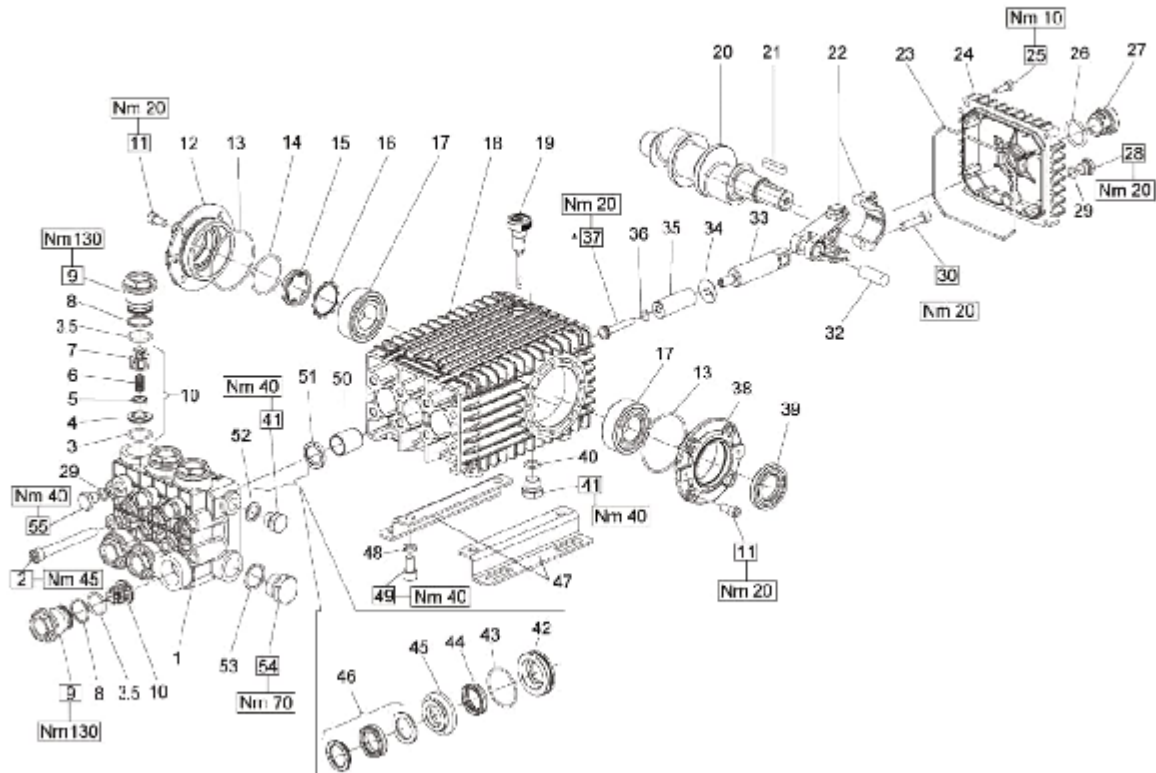
Code	Description	Qty
980069	Packing extractor	1
2748	Rail kit 1/4" 2Pals 4Bolts 4Washes	1

Pos	Code	Description	Qty	Pos	Code	Description	Qty
1	194C250	Head bolt M10x80	(442 in/lbs) 8	34	114C370	Oil cap	1
2	65C530	Lockwasher	8	35	126C250	Oil sight glass	1
3	194C140	Valve cap	(802 in/lbs) 6	36	126C430	Snap ring	1
4	194C150	Ring	6	37	194C410	O-Ring ø132x3	1
5	114C450	O-Ring ø20.24x2.62	12	38	120C430	Bolt M5x6	(89 in/lbs) 6
6	194S050	Complete valve	6	39	194S010	Complete cover	1
7	194C021	Pump head	1	40	178C690	Contrast disc	1
7	1941210	Pump head	A 1	41	114C450	O-Ring ø20.24x2.62	1
8	55C350	O-Ring ø25.81x2.62	1	42	82C680	Seal ring	1
9	114C300	Plug 5/16" G	3	43	194C550	Seal	3
10	198C740	Plug 3/8" G	3	44	194C370	Rail 1-1/4"	2
11	74C290	O-Ring ø14x1.78	3	45	194C380	Bolt	4
12	194C440	High pressure seal wiring	3	46	20C231	Washer	4
13	194C340	Front piston guide	3	47	1941240	Open bearing support	1
14	1942410	Piston guide	3	53	1941640	Bolt M5x6	3
15	84C280	Low pressure seal	3	60	1949216	Complete pump head	1
16	82C490	O-Ring ø34.65x1.78	3	60	1945217	Complete pump head	A 1
18	134C600	Washer Cooper	3	75	1941270	Oil sight glass	1
19	1942330	Piston	3	76	10C410	O-Ring ø34.6x2.62	1
21	1383190	Spacer	3	77	1941250	Contrast disc	1
23	194C950	Guiding piston	3	78	1941290	Seal	1
24	194C050	Piston pin	3				
25	1941380	O-Ring ø66.34x2.62	2		AR64516	Oil	2
	1941390	Shim 0.05 mm	1-3			Oil Capacity - 32 oz	
	1941400	Shim 0.10 mm	1-3				
	1941410	Shim 0.19 mm	1-3				
	1941420	Shim 0.25 mm	1-3				
	27	1949011	Side cover w/sight glass	1			
	28	85C370	Bolt M8x6	(217 in/lbs) 8			
	29	114C410	Bearing	2			
	30	194C051	Con-rod	(86 in/lbs) 3			
		194C180	Crankshaft 24mm	1			
		194C150	Crankshaft 24mm	A 1			
		194C530	Crankshaft 24mm	1			
		194C170	Crankshaft 24mm	1			
	32	65C250	Key	1			
	33	1941330	Pump housing	1			

Legend		
ø 20	ø 20	ø 20
For O	For A	For ●
XWA-M5.5G40	XWA-M8G29	XWA-M4G40
	XWA-M8G35	
For ■		
XWA-M7G40		

A.R. North America, Inc. • www.arnorthamerica.com • info@arnorthamerica.com

**XWA-M7G40N**



### PARTS LIST

POS.	PART NO.	DESCRIPTION	QTY.	POS.	PART NO.	DESCRIPTION	QTY.	POS.	PART NO.	DESCRIPTION	QTY.
1	66124541	Manifold, Ø 18mm	-	21	91489230	Key, 6x7x35	1	42	66380470	Seal Retainer, Ø 24mm	3
	66120341	Manifold, Ø 20mm	-	22	66030031	Connecting Rod, Complete	3		66382570	Seal Retainer, Ø 28mm	3
	66120141	Manifold, Ø 22 mm	-	23	90392230	O-ring, Ø153.02x2.62	1	43	90361800	O-ring, Ø 34.65x1.78	3
	66120241	Manifold, Ø 24mm	-	24	66160022	Rear Cover	1	44	90265200	LP Seal, Ø 18mm	3
	66124541	Manifold, Ø 26mm	-	25	99188430	Screw, M6x20	4		90269000	LP Seal, Ø 20mm	3
2	99380100	Headball M10 x 50	8	26	90405100	O-ring, 26.58x3.53	1		90271500	LP Seal, Ø 22mm	3
3	90385700	O-ring, Ø 23.81x2.62	6	27	63210051	Oil Level Indicator	1		90273800	LP Seal, Ø 24mm	3
3.5	90385700	O-ring, Ø 23.81x2.62	6	28	98204100	Plug, G1/4"x9	1	45	90275300	LP Seal, Ø 28mm	3
4	36203366	Valve Seal	6	29	701013	O-ring, Ø 426x.970	4		66216370	Intermediate Ring, Ø 18mm	3
5	36203476	Valve Poppet	6	30	99309930	Screw, M6x35	6		66216970	Intermediate Ring, Ø 20mm	3
6	94738300	Valve Spring Ø10x18x18.5	6	32	97740530	Wrist Pin, 14x39	3		66216170	Intermediate Ring, Ø 22mm	3
7	36203551	Valve Guide	6	33	66050054	Piston Guide	3		66216470	Intermediate Ring, Ø 24mm	3
8	90516500	Anti-castling Ø24.7x28x1.5	6	34	96710100	Flinger Washer	3	48	66250070	Intermediate Ring, Ø 28mm	3
9	66130341	Plug, M32x1.5x28.5	8	35	66040339	Plunger, Ø 18mm	3		90265500	HP Seal, Ø 18mm	3
10	36712701	Valve Assy., Complete	6		66040039	Plunger, Ø 20mm	3		90269200	HP Seal, Ø 20mm	3
11	99305300	Screw M8 x 16	8		66040139	Plunger, Ø 22 mm	3		90271100	HP Seal, Ø 22mm	3
12	47151222	Cover	-		66040439	Plunger, Ø 24mm	3		90274100	HP Seal, Ø 24mm	3
13	90391300	O-ring, Ø37.95x2.62	2		66041039	Plunger, Ø 28mm	3	47	90275400	HP Seal, Ø 28mm	3
14	90387700	O-ring, Ø 34.34x2.62	1	36	66041039	Plunger, Ø 28mm	3	48	47200074	Pump Rail	3
15	70211801	Oil Sight Glass	-	37	90358400	O-ring, Ø 10.82x1.76	3	49	96710800	Washer M10	4
16	90075300	Retainer Clip	-	38	66219536	Plunger Bolt	3		99364400	Screw M10 x 18	4
17	91838300	Bearing	2	39	47151022	Side Cover, PTC	1	50	90312600	Guide Bushing	3
18	66010322	Crankcase	-	40	90184830	Sea, Shaft	1	51	90162500	Seal, Plunger Rod	3
19	96210300	Dipstick, vented	-	41	90383330	O-ring, Ø 13.95x2.62	1	52	96738000	Gasket Aluminium 3/E"	1
20	66021035	Crankshaft, 19mm Stroke, Dual Shaft	-	42	98210030	Plug 3/8 x 13	2	53	96770000	Washer	1
	66020325	Crankshaft, 19mm Stroke	-		66080370	Sea Retainer, Ø 19 mm	3	54	98228800	Plug, G3/8"x18	1
	66020435	Crankshaft, 21mm Stroke	-		66080070	Sea Retainer, Ø 20mm	3	55	98204300	Plug 1/4" x 15	3
					66080170	Sea Retainer, Ø 22mm	3				

### REPAIR KITS

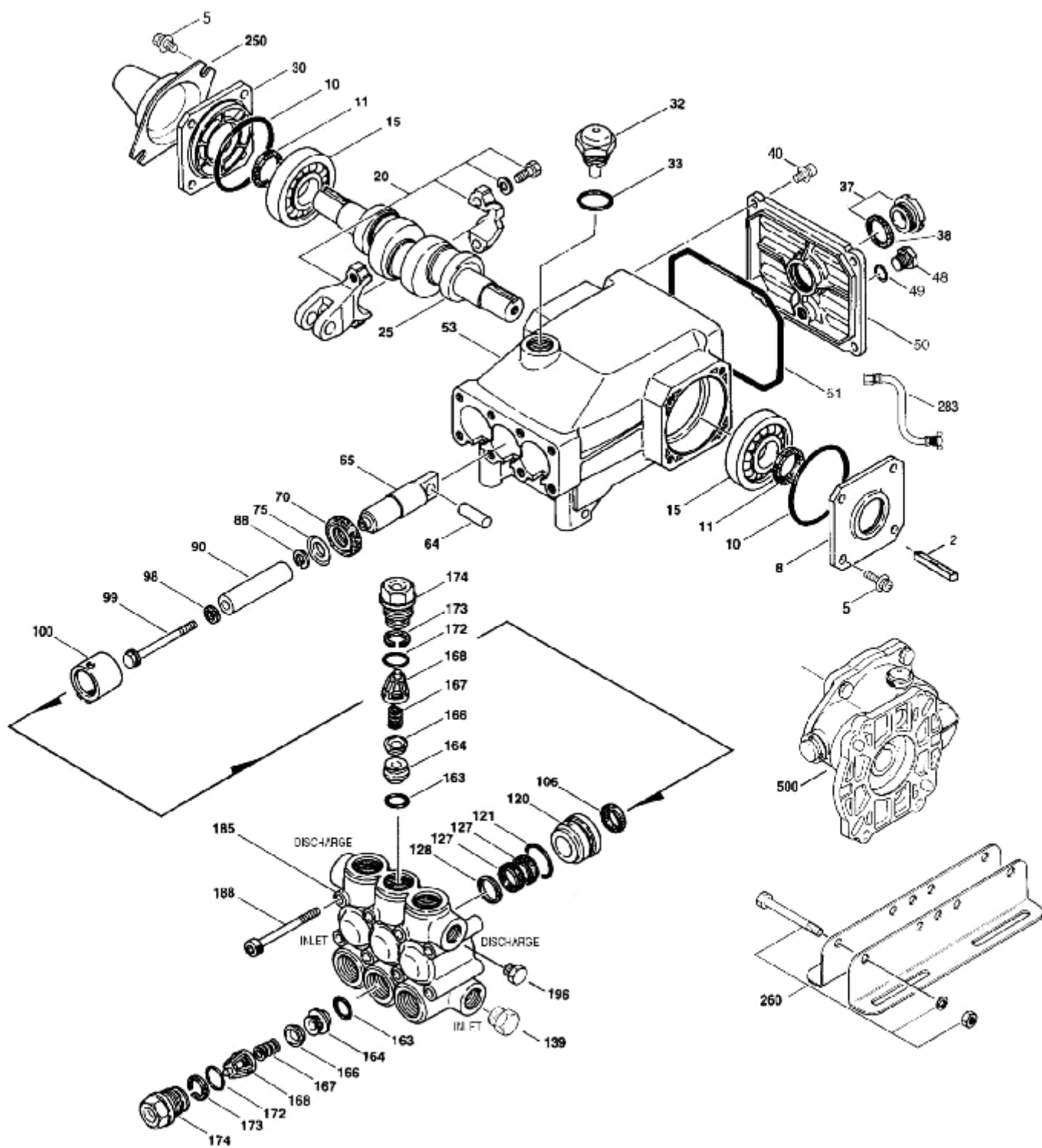
KIT NO.	K02	K03	K169	K180 (18mm)	K176 (18mm)	K170 (20mm)	K171 (20mm)	K172 (22mm)	K173 (22mm)	K181 (24 mm)	K182 (24mm)	K248 (29mm)	K247 (28mm)
POS. NO'S INCLUDED IN KIT	51	39	3, 4, 5, 6, 7 (10)	44, 46	42, 43, 44, 45, 46	44, 46	42, 43, 44, 45, 46	44, 46	42, 43, 44, 45, 46	44, 46	42, 43, 44, 45, 46	44, 46	42, 43, 44, 45, 46
NUMBER OF ASSEMBLIES IN KIT	3	1	6	3	1	3	1	3	1	3	1	3	1
NUMBER OF CYLINDERS KIT WILL SERVICE	3	N/A	3	3	1	3	1	3	1	3	1	3	1

Ref 310045 Rev. L  
04-15



TSF2021

# EXPLODED VIEW



Models  
5PP3140G1, 5PP3140,  
5PP3150G1

# PARTS LIST

ITEM	PART NUMBER				DESCRIPTION	QTY
	<b>5PP3140G1</b>					
	<b>5PP3150G1</b>					
		<b>MATL</b>	<b>5PP3140</b>	<b>MATL</b>		
2	30057	STL	30057	STL	Key (M8x6x25)	1
5	126542	STCP R	126542	STCP R	Screw, HHC, Sems (M8x16)	8
8	46910	AL	46910	AL	Cover, Bearing	1/2
10	14028	NBR	14028	NBR	C-Ring, Bearing Cover - 70D	2
11	43222	NBR	43222	NBR	Seal, Oil, Crankshaft - 70D	2
15	14180	STL	14180	STL	Bearing, Ball	2
20	48742	INM	48742	INM	Rod, Connecting Assy	3
25	—	—	<b>46928</b>	<b>FCM</b>	Crankshaft, Dual End (M18) - 5PP3140	1
	<b>48368</b>	<b>FCM</b>	—	—	Crankshaft, Single End (M16.5) - 5PP3140G1	1
	<b>48233</b>	<b>FCM</b>	—	—	Crankshaft, Single End (M18) - 5PP3150G1	1
30	<b>48224</b>	<b>AL</b>	—	—	Cover, Bearing B inc	1
32	46798	—	46798	—	Cap, Oil Filler, Domed	1
33	14179	NBR	14179	NBR	C-Ring, Oil Filler Cap - 70D	1
37	92241	—	92241	—	Gauge, Oil, Bubble w/Gasket - 80D	1
38	44428	NBR	44428	NBR	Gasket, Flat, Oil Gauge - 80D	1
40	125824	STCP R	125824	STCP R	Screw, HHC, Sems (M6x16)	4
48	25625	STCP	25625	STCP	Plug, Drain (1/4"x19BSP)	1
49	23170	NBR	23170	NBR	C-Ring, Drain Plug - 70D	1
50	46940	AL	46940	AL	Cover, Rear	1
51	14044	NBR	14044	NBR	C-Ring, Rear Cover	1
53	48617	AL	48617	AL	Crankcase	1
64	46746	CM	46746	CM	Pin, Crosshead	3
65	48458	BBNP	48458	BBNP	Rod, Plunger	3
70	46838	NBR	46838	NBR	Seal, Oil, Crankcase - 70D	3
75	43900	S	43900	S	Slinger, Barrier	3
88	45697	S	45697	S	Washer, Keyhole (M18)	3
90	46884	CC	46884	CC	Plunger (M16x50)	3
98	46730	NBR	46730	NBR	Washer, Seal - 90D	3
99	† 48201	SS	† 48201	SS	Retainer, Plunger w/Stud (M6)	3
100	46749	PVDF	46749	PVDF	Retainer, Seal	3
106	43316	NBR	43316	NBR	Seal, LPS w/S-Spg	3
120	46888	DB	46888	DB	Case, Seal (Press-in-style)	3
121	13978	NBR	13978	NBR	C-Ring, Seal Case - 70D	3
127	43319	SNG	43319	SNG	V-Packing	6
128	46618	NY	46618	NY	Adapter, Male	3
139	22179	BBCP	22179	BBCP	Plug, Inlet (1/2"NPTM)	1
163	17547	NBR	17547	NBR	C-Ring, Seat - 85D	6
164	45790	S	45790	S	Seat	6
166	46429	S	46429	S	Valve	6
167	43750	S	43750	S	Spring	6
168	† 44565	PVDF	† 44565	PVDF	Retainer, Spring (White)	6
172	17549	NBR	17549	NBR	C-Ring, Valve Plug - 70D	6
173	48365	D	48365	D	Back up Ring, Valve Plug	6
174	45900	BB	45900	BB	Plug, Valve	6
185	46886	FBB	46886	FBB	Manifold, Head	1
188	126513	STCP R	126513	STCP R	Screw, HSH (M8x70)	8
196	22187	BBCP	22187	BBCP	Plug, Discharge (3/8"NPTM)	1
250	—	—	118672	STCP	Protector, Shaft	1
255	—	—	30243	STZP	Mount, Direct	1
260	—	—	30611	STZP R	Assembly, Angle Rail	1
	—	—	30637	STZP	Mount, Angle Assy-Retro Fit	1
265	—	—	30659	—	Kit, Complete Mounting (Incls: 30611, 30633, 118672)	1
275	—	—	30944	STL	Assembly, Hub & Key (Incls: 30945, 30057)	1
277	—	—	34424	AL	Bell Housing Assy (10 Hp-184TC)	1
278	—	—	8230	AL	Flexible Coupling Assy (20mm to 1-1/8")	1
	—	—	8275	AL	Flexible Coupling Assy (20mm to 1-3/8")	1
279	—	—	990213	AL	Kit, Adapter (must be used with 34424 to connect to motor frame 213-215T)	1
283	34334	—	34334	—	Kit, Oil Drain (3/8" x 24")	1
300	899410	NBR	899410	NBR	Kit, Seal (Incls: 106, 127)	1
310	899110	NBR	899110	NBR	Kit, Valve (Incls: 163, 164, 166, 167, 168, 172, 173)	1
350	30696	STZP	30696	STZP	Pliers, Reverse	1
500	8076	—	—	—	Gearbox (See Individual Data Sheet)	1
—	6107	—	6107	—	Oil, Bottle (21 oz.) ISO-68 Hydraulic (Fill to specified crankcase capacity prior to start-up)	1

**Bold print part numbers are unique to a particular pump model. Italics are optional items.**

† Production parts are different than repair parts. R Components comply with RoHS Directive.

See Tech Bulletins 032, 003, 024, 036, 043, 053, 060, 061, 064, 073, 074, 077, 078 and 083 for additional information.

MATERIAL CODES (Not Part of Part Number): AL=Aluminum BB=Brass BBCP=Brass/Chrome Plated BBNP=Brass/Nickel Plated CC=Ceramic CM=Chrome-moly D=Acetal FBB=Forged Brass FCM=Forged Chrome-moly NBR=Medium Nitrile (Buna-N) NY=Nylon PTFE=Pure Polytetrafluoroethylene PVDF=Polyvinylidene Fluoride S=304SS SNG=Special Blend (Buna) STL=Steel STCP=Steel/Chrome Plated STZP=Steel/Zinc Plated TNM=Special High Strength

## 10. Replacement Parts

For best performance specify genuine *Beckett* replacement parts

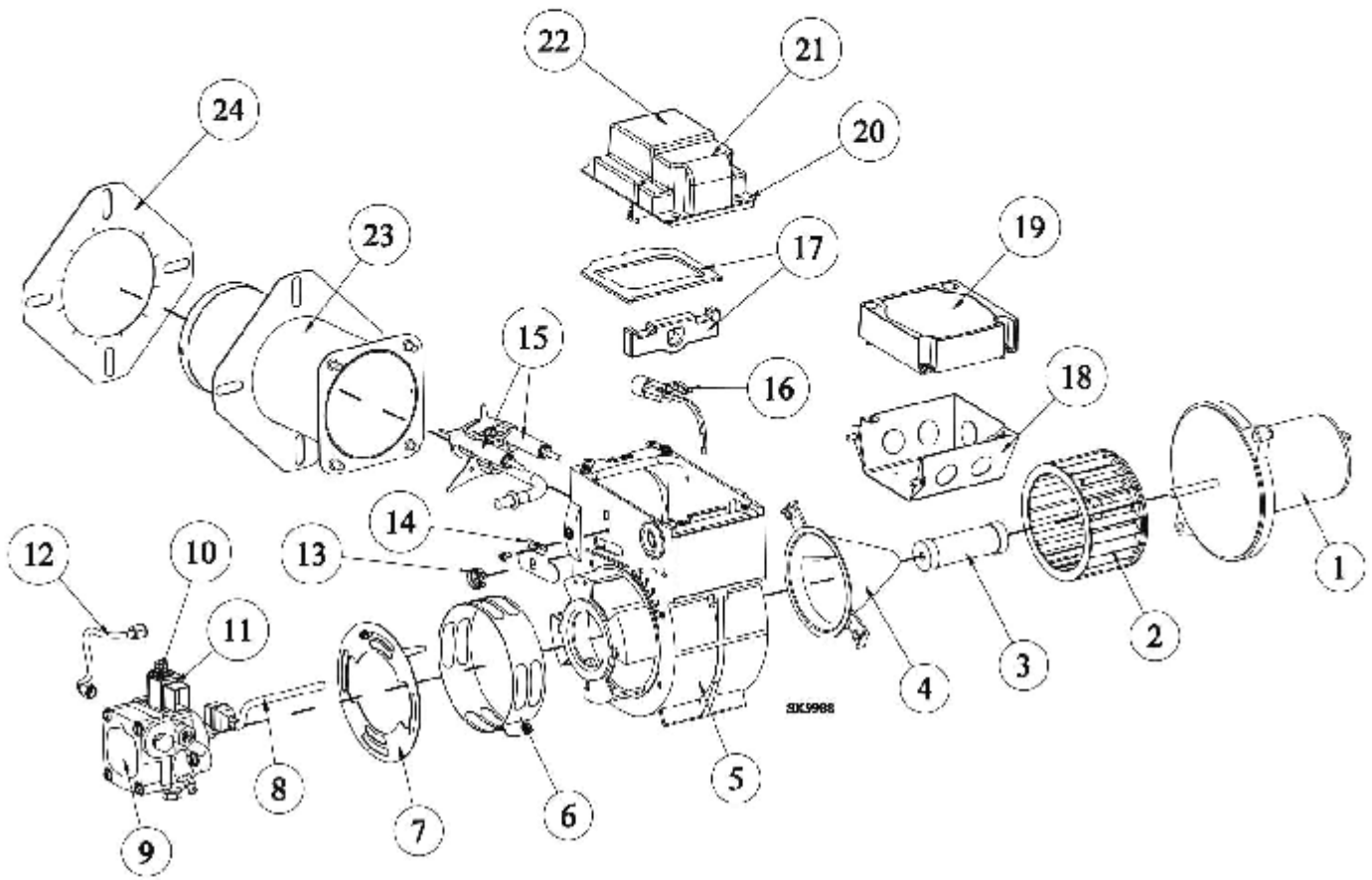


Illustration #	Description	Part#
1	DC Motor	21699UF
2	Blower Wheel	21404U
3	Coupling	21405
4	Air Guide	31231U
5	Burner Housing - Black	55874BKU
6	Air Band	5151501
7	Air Shutter - 4 Slot Air Shutter - 8 Slot	3709 3494
8	Cord set	21807
9	Pump (CleanCut)	2184402U
10	Tube Assembly	21877U
11	12 volt Coil	21754U
12	8" Copper Tubing	5394
13	Escutcheon Plate Spline Nut	3666

Illustration #	Description	Part#
14	Escutcheon Plate	3493
15	Electrode Kit over 3-5/8"	570731
16	Cad Cell Detector	7492/7006U
17	Ignitor Gasket Kit	51411
18	4X4 Wiring Box Kit	5770
19	Control Kit	7556x-xxxxU*
20	Ignitor Ass'y w ICB Ignitor w/o ICB	51776TU 51777TU
21	ICB Kit	51663
22	Ignitor only	7435U
23	Air Tube Ass'y	Specify
24	Flange Mounting Gasket	Specify
Not Shown	Tune-up Kit for 30 & 35 Air Tube Lengths	578730

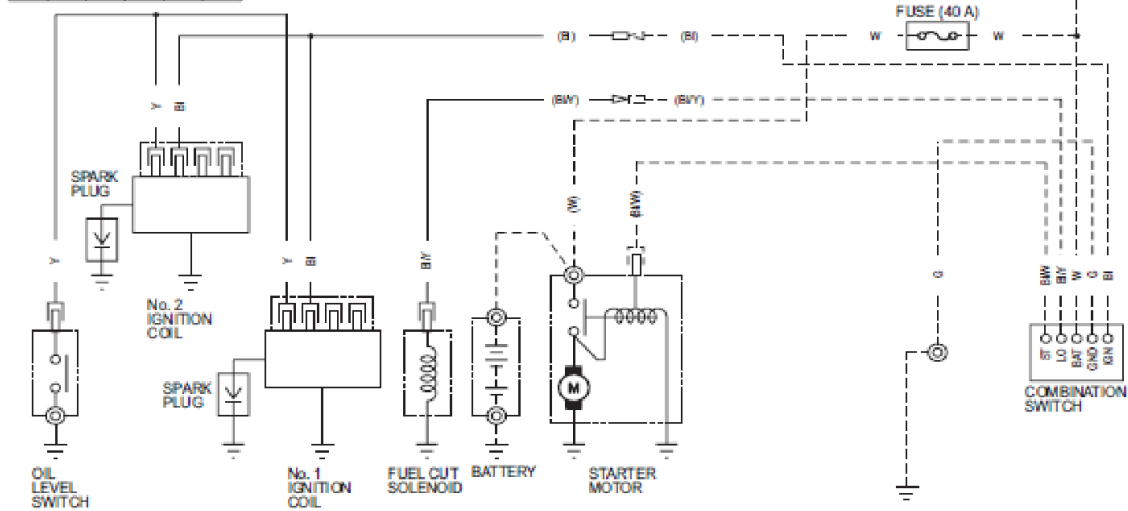
\* 'X's indicate timing options. Contact Beckett for available part numbers.

### PRO101 BURNER HEAD



Bl	Black	Br	Brown
Y	Yellow	O	Orange
Bu	Blue	Lb	Light blue
G	Green	Lg	Light green
R	Red	P	Pink
W	White	Gr	Gray

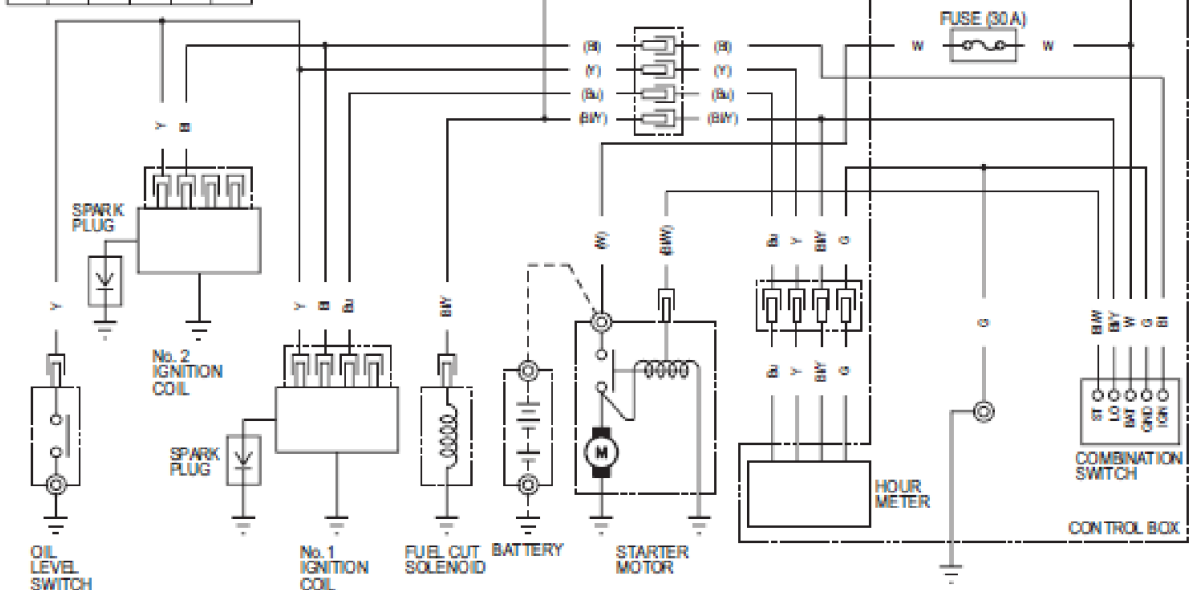
COMBINATION SWITCH					
	IGN	GND	BAT	LO	ST
OFF					
ON	○	○	○	○	
ST	○	○			○



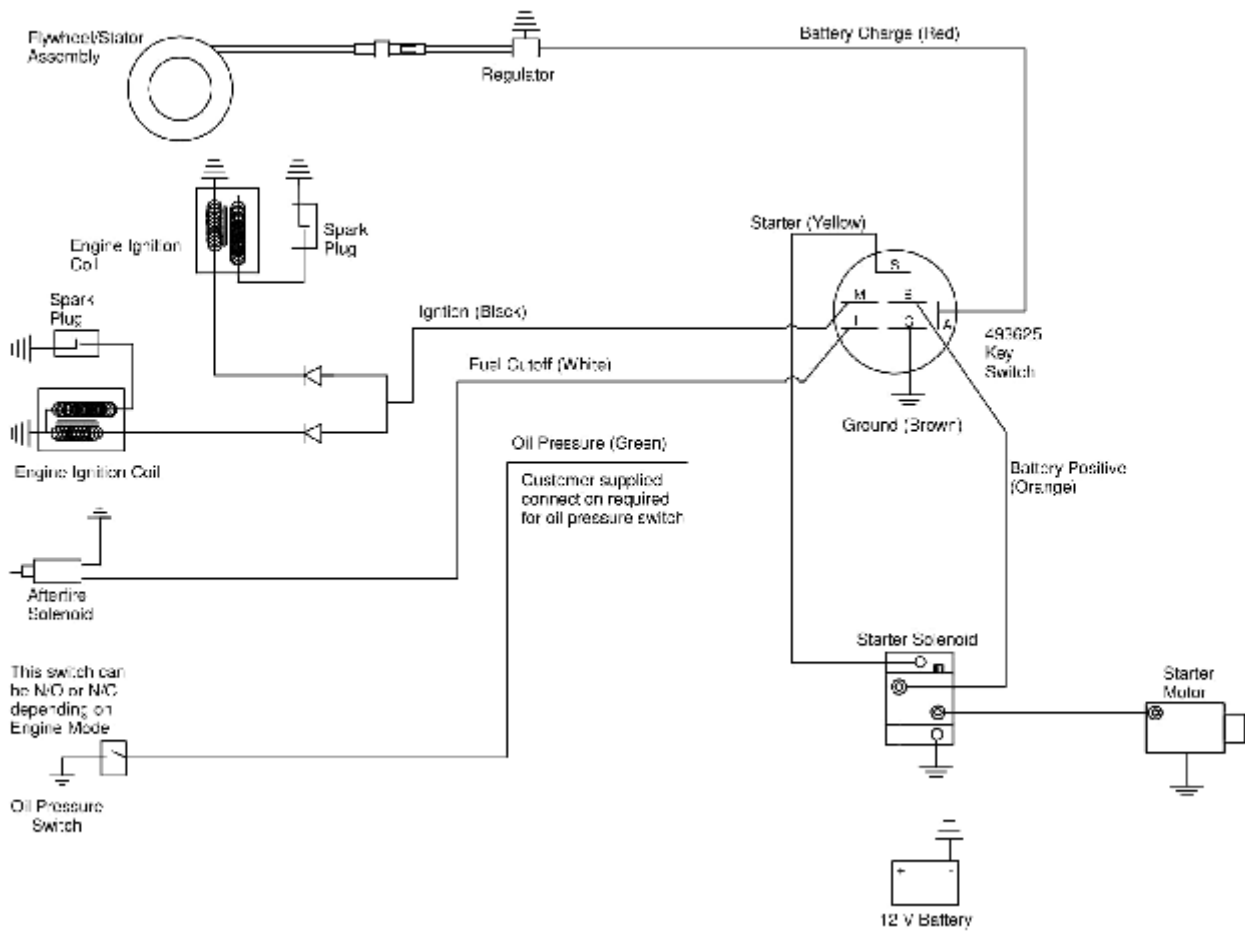
HONDA GX630 / GX690

Bl	Black	Br	Brown
Y	Yellow	O	Orange
Bu	Blue	Lb	Light blue
G	Green	Lg	Light green
R	Red	P	Pink
W	White	Gr	Gray

COMBINATION SWITCH					
	IGN	GND	BAT	LO	ST
OFF					
ON	○	○	○	○	
ST	○	○			○



HONDA GX390



VANGUARD 356447-0270-G1