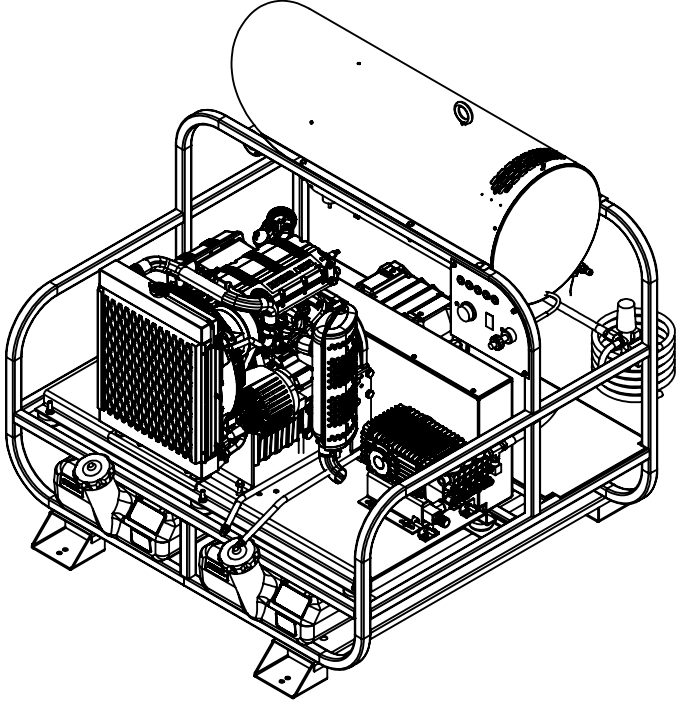


# PRO SUPER SKID DIESEL ENGINE BELT DRIVE 12 VOLT PARTS MANUAL



## VARIATIONS

REV 1.0 BEGINNING SERIAL NUMBER

PART NUMBER	GPM	PSI	ENGINE	PUMP
4012PRO-32KLDG	4.0	3200	KD420ES	GP
PP6012PRO-40KLDG*	5.5	4000	KDW1003	GP
7012PRO-40KDLA	7.0	4000	KDW1003	AR
8012PRO-35KLDG	8.0	3500	KDW1003	GP
8012PRO-40KLDG	8.0	4000	KDW1003	HP

## TABLE OF CONTENTS

SERVICE WARNINGS.....PG 3

### PARTS BREAKDOWNS

MACHINE VARIATIONS.....PG 8

MAIN FRAME.....PG 9

MOTOR PUMP ASSY.....PG 10

COIL TANK ASSEMBLY.....PG 12

CONTROL PANEL.....PG 14

PLUMBING KIT.....PG 15

DRIVE KITS.....PG 18

BATTERY KIT.....PG 23

ACCESSORIES.....PG 24

PUMP BREAKDOWNS.....PG 25

BURNER HEAD BREAKDOWN..PG 30

WIRING DIAGRAMS.....PG 31



**EXTREMELY HAZARDOUS OR DANGEROUS SITUATION THAT WILL RESULT IN DEATH OR SERIOUS INJURY IF NOT OBEYED OR AVOIDED.**



**DO NOT FILL OR REFILL THE ENGINE WITH FUEL WHILE THE ENGINE IS RUNNING. STOP THE ENGINE, RELEASE THE PRESSURE IN THE HOSE AND ALLOW THE ENGINE TO COOL FOR AT LEAST 5 MINUTES BEFORE REFUELING.**

**DO NOT SMOKE WHEN REFILLING ANY FUEL TANKS.**

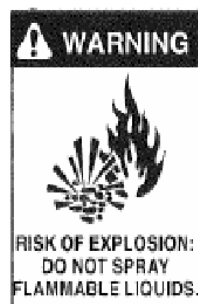
**DO NOT REFUEL INDOORS.**

**REFILL ONLY IN A WELL VENTILATED AREA.**

**DO NOT OVER FILL TANKS. REFILL TANKS SLOWLY TO AVOID SPILLING FUEL.**

**DO NOT RESTART MACHINE UNTILL ALL FUEL SPILLS HAVE BEEN THOROUGHLY CLEANED UP AND ANY RESIDUAL FUEL HAS EVAPORATED.**

**DO NOT STORE THE MACHINE NEAR OPEN FLAME, HEAT SOURCE OR ANY DEVICE THAT COULD CREATE A SPARK.**



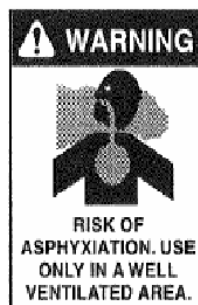
**DO NOT SPRAY FLAMMABLE LIQUIDS.**

**DO NOT OPERATE PRESSURE WASHER IN THE PRESENCE OF FLAMMABLE LIQUIDS, VAPORS, GASSES, COMBUSTIBLE DUST OR ANY OTHER COMBUSTIBLE MATERIALS.**

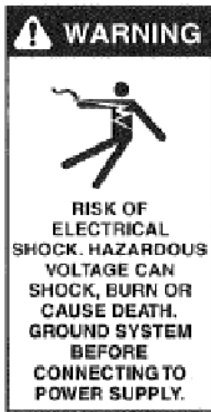
**DO NOT USE CRANKCASE OR WASTE OIL.**

**DO NOT PUT GASOLINE IN ANY TANK INTENDED FOR FUEL OIL.**

**USE ONLY No.1 OR No.2 HEATING OIL OR DIESEL FUEL IN THE BURNER TANK.**



**DO NOT OPERATE PRESSURE WASHER IN AN ENCLOSED AREA. USE ONLY IN A WELL VENTILATED AREA. PROPER VENTILATION AND OXYGEN SUPPLY IS NEED TO SUSTAIN YOUR LIFE AND FOR THE SAFE AND EFFICIENT OPERATION OF THIS MACHINE.**



**DO NOT DIRECT THE WATER STREAM OR SPRAY AT ANY ELECTRICAL INSTALLATION OF ANY KIND INCLUDING LIGHTS.**

**DO NOT USE THE WATER STREAM TO CLEAN THE PRESSURE WASHER.**

**DO NOT USE EXTENSION CORDS. USE ADDITIONAL HOSES.**

**DO NOT USE THE PRESSURE WASHER IF THE GFCI, CIRCUIT BREAKER OR THERMAL OVERLOAD PROTECTOR TRIPS.**

**DO NOT USE WHILE RAINING.**

**DO NOT USE IF POWER SUPPLY CORD IS DAMAGED.**

**DO NOT REPAIR POWER SUPPLY CORD. REPLACE IT.**

**DO NOT ALLOW POWER CORD TO LAY IN STANDING WATER.**

**USE ONLY FACTORY SUPPLIED CORD SET WITH A PROPERLY GROUNDED RECEPTACLE THAT IS EQUIPPED WITH A GROUND FAULT CIRCUIT INTERRUPTER.**

**USE ONLY A PROPERLY SIZED AND ISOLATED ELECTRICAL SUPPLY CAPABLE OF THE FULL LOAD AMPERAGE THAT THE PRESSURE WASHER REQUIRES.**



**DO NOT USE THE PRESSURE WASHER WHILE STANDING ON A LADDER OR SCAFFOLDING.**

**DO NOT USE WHILE STANDING ON PITCHED ROOFS.**

**WET SURFACE IS SLIPPERY. DANGER OF SLIP AND FALL.**



**DO NOT POINT THE WATER STREAM AT ANY PERSONS OR ANIMALS.**

**DO NOT OPERATE IN THE VICINITY OF CHILDREN.**

**DO NOT USE THE WATER STREAM TO CLEAN ANY PROTECTIVE CLOTHING OR BOOTS.**



**USE ONLY FACTORY APPROVED IDENTICAL REPLACEMENT PARTS.**

**DO NOT CHANGE OR TAMPER WITH FACTORY PRESET**

**ADJUSTMENTS. NEVER DEFEAT OR DISABLE ANY SAFETY DEVICES ON THE MACHINE.**



DO NOT OPERATE THE UNIT WITH A MALFUNCTIONING BURNER OR BURNER CONTROL. INSPECT BURNER AND BURNER CONTROL OPERATION BEFORE EACH USE. FAILURE TO DO SO MAY RESULT IN AN EXPLOSION OR FIRE. IF YOU SUSPECT A

PROBLEM WITH THE BURNER, DISCONTINUE USE IMMEDIATELY AND CONTACT YOUR LOCAL AUTHORIZED DISTRIBUTOR.

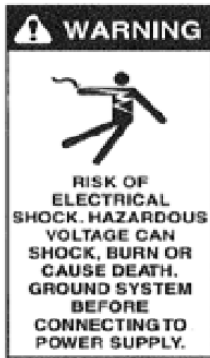
**WARNING! (Liquid Petroleum or Natural Gas Fired Units)**

FOR YOUR SAFETY, IF YOU SMELL GAS:

1. OPEN WINDOWS.
2. DO NOT TOUCH ELECTRICAL SWITCHES.
3. TURN OFF BREAKER SWITCH SUPPLYING POWER TO UNIT. CLOSE GAS SUPPLY VALVE TO UNIT.
4. EXTINGUISH ANY OPEN FLAME.
5. IMMEDIATELY EVACUATE PREMISES AND CALL YOUR GAS SUPPLIER.
6. MACHINES CAN CAUSE AN EXPLOSION WHEN OPERATED NEAR FLAMMABLE MATERIALS AND VAPORS. DO NOT- USE THIS MACHINE WITH OR NEAR FUELS, GRAIN DUST, SOLVENTS, THINNERS OR OTHER FLAMMABLE MATERIALS.
7. THIS UNIT MUST BE INSTALLED IN COMPLIANCE WITH ALL APPLICABLE GAS CODES. FAILURE TO DO SO COULD RESULT IN INJURY OR DEATH TO YOU OR TO OTHER PERSONNEL.
8. USE NO. 1 OR NO. 2 FUEL OIL ONLY IN OIL FIRED MACHINES. NEVER INTRODUCE GASOLINE TO THE FUEL OIL TANK. DOING SO COULD RESULT IN AN EXPLOSION OR FIRE. KEEP THE PROPER FUEL IN THE PROPER TANK.



**POTENTIALLY HAZARDOUS SITUATION THAT COULD RESULT IN DEATH OR SERIOUS INJURY IF NOT OBEYED OR AVOIDED.**



**DISCONNECT POWER BEFORE SERVICING THE PRESSURE WASHER.**

**DISCONNECT SPARK PLUG BEFORE SERVICING THE PRESSURE WASHER.**

**DO NOT DIRECT THE WATER STREAM OR SPRAY AT ANY ELECTRICAL INSTALLATION OF ANY KIND INCLUDING LIGHTS.**



**DO NOT TOUCH HOT SURFACES. EG. MUFFLER, BURNER, ENGINE, HEAT EXCHANGER, EXHAUST HEAD.**

**USE ONLY INSULATED EXTENSION WAND WITH HOT WATER.**

**DO NOT ALLOW HOSES TO TOUCH HOT SURFACE.**



**DO NOT USE PRESSURE WASHER WITHOUT PROPER PROTECTIVE WEAR. USE EYE PROTECTION, RUBBER GLOVES, RUBBER BOOTS, AND PROTECTIVE CLOTHING.**

**DO NOT USE CORROSIVE OR AGGRESSIVE CHEMICALS WITHOUT PROPER PROTECTIVE WEAR.**

**THIS MACHINE PRODUCES HOT WATER AT VERY HIGH PRESSURES. USE ONLY APPROVED ACCESSORIES RATED FOR HOT WATER AND HIGH PRESSURE.**



**POTENTIALLY HAZARDOUS SITUATION THAT COULD RESULT IN PERSONAL INJURY OR PROPERTY DAMAGE IF NOT OBEYED OR AVOIDED.**

**DO NOT** LEAVE THE PRESSURE WASHER RUNNING UNATTENDED. TURN THE MACHINE OFF AND RELEASE ALL PRESSURE FROM THE SYSTEM.

**DO NOT** DEFEAT THE TRIGGER GUN SAFETY

**DO NOT** LOCK THE TRIGGER IN THE OPEN POSITION IN ANY WAY.

KNOW THE MACHINE CONTROLS AND HOW TO QUICKLY SHUT DOWN AND RELEASE ALL PRESSURE IN THE SYSTEM.

**DO NOT** OPERATE THE MACHINE WITHOUT ALL GUARDS AND PROTECTIVE COVERS IN PLACE.

**DO NOT** ALLOW ANY PART OF PERSONS OR HOSES TO CONTACT HOT SURFACES.

DO NOT HAVE ENGINE EXHAUST POINTING AT FLAMMABLE MATERIALS.

**INSPECT** THE PRESSURE WASHER AND HOSES FOR DAMAGED PARTS DAILY.

REPAIR LEAKS AS THEY HAPPEN TO PREVENT FURTHER DAMAGE.

**DO NOT** OPERATE WITH ANY FAULTY OR DAMAGED COMPONENTS.

**DISCONNECT POWER** CORD, BATTERY NEGATIVE AND SPARK PLUG BEFORE PERFORMING ANY SERVICE ON THE PRESSURE WASHER.

KEEP ALL HOSES AND POWER CORDS AWAY FROM VEHICLE TRAFFIC.

**DO NOT** MOVE THE MACHINE BY PULLING ON THE HOSE.

DO NOT LEAVE THE MACHINE EXPOSED TO HARSH ENVIRONMENTS.

DO NOT OPERATE THE MACHINE IN THE RAIN.

**DO NOT** DIRECT THE HIGH PRESSURE WATER STREAM AT FRAGILE OBJECTS.

**DO NOT** USE ANY ACCESSORIES UNLESS THEY ARE RATED AT OR ABOVE THE WORKING PRESSURE AND TEMPERATURE OF THE MACHINE.

**ALWAYS USE** EYE, FACE, HAND, FOOT, HEARING, AND BODY PROTECTIVE WEAR.

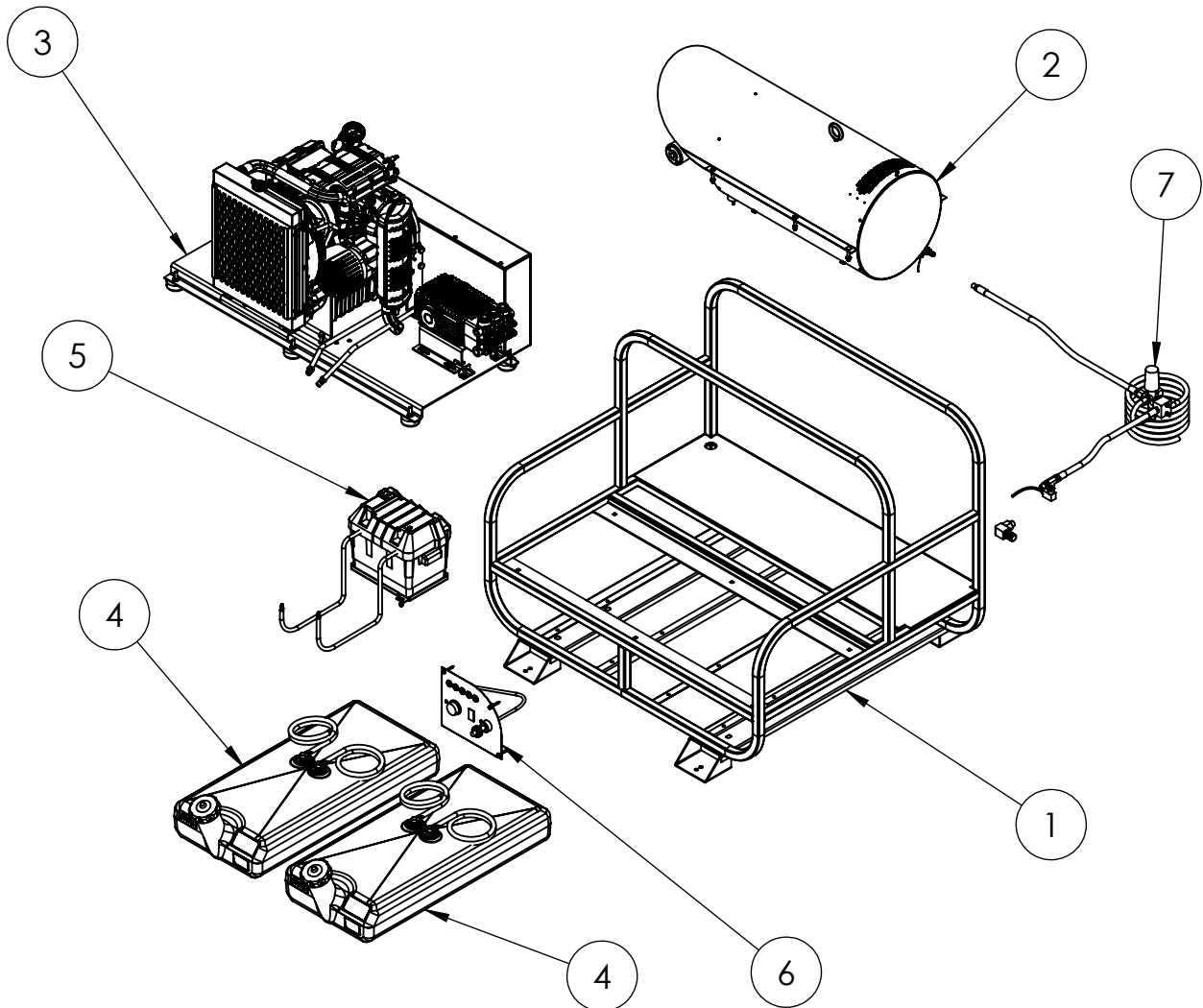
**DO NOT** OPERATE PRESSURE WASHER IF FATIGUED OR UNDER THE INFLUENCE OF ALCOHOL OR DRUGS. **BE ALERT AT ALL TIMES.**

## MACHINE VARIATIONS

PART NUMBER	ENGINE	PUMP	COIL TANK ASSY
4012PRO-32KLDG	KD440E	TSS1511	PP4425-80/CS
PP6012PRO-40KLDG*	PA-KDW1003-1001-PP1	TSP1821	PP4425-80/CS
7012PRO-40KDLA	PA-KDW1003-1001-PP1	XWA-M7G40N	PP4425-80/CS
8012PRO-35KLDG	PA-KDW1003-1001-PP1	TSF2021	PP4425-80/CS
8012PRO-40KLDG	PA-KDW1003-1001-PP1	HP8040	PP4425-80/CS

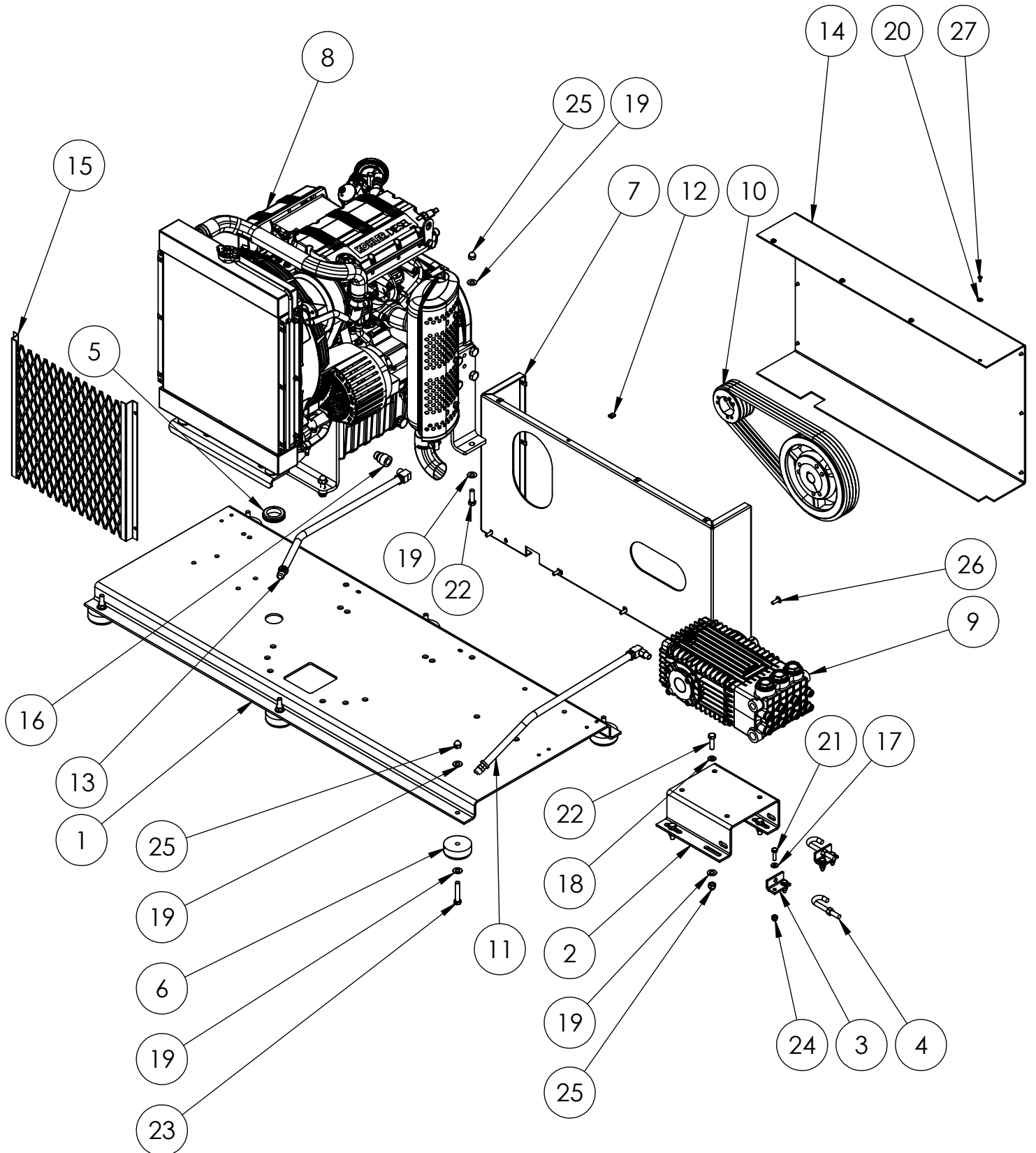
PART NUMBER	PLUMBING KIT	DRIVE KIT	FUEL NOZZLE	SPRAY NOZZLES
4012PRO-32KLDG	KPL460	KDR326	21489	TPK040-GPC
PP6012PRO-40KLDG*	KPL360-D	DRIVE KIT16	2564	TPK055-GPC
7012PRO-40KLDA	KPL160-D	DRIVE KIT 17	2564	TPK070
8012PRO-35KLDG	KPL160-D	DRIVE KIT18	2564	TPK085
8012PRO-40KLDG	KPL160-D	DRIVE KIT 19	2564	TPK080

# 6012PRO-40KLDG



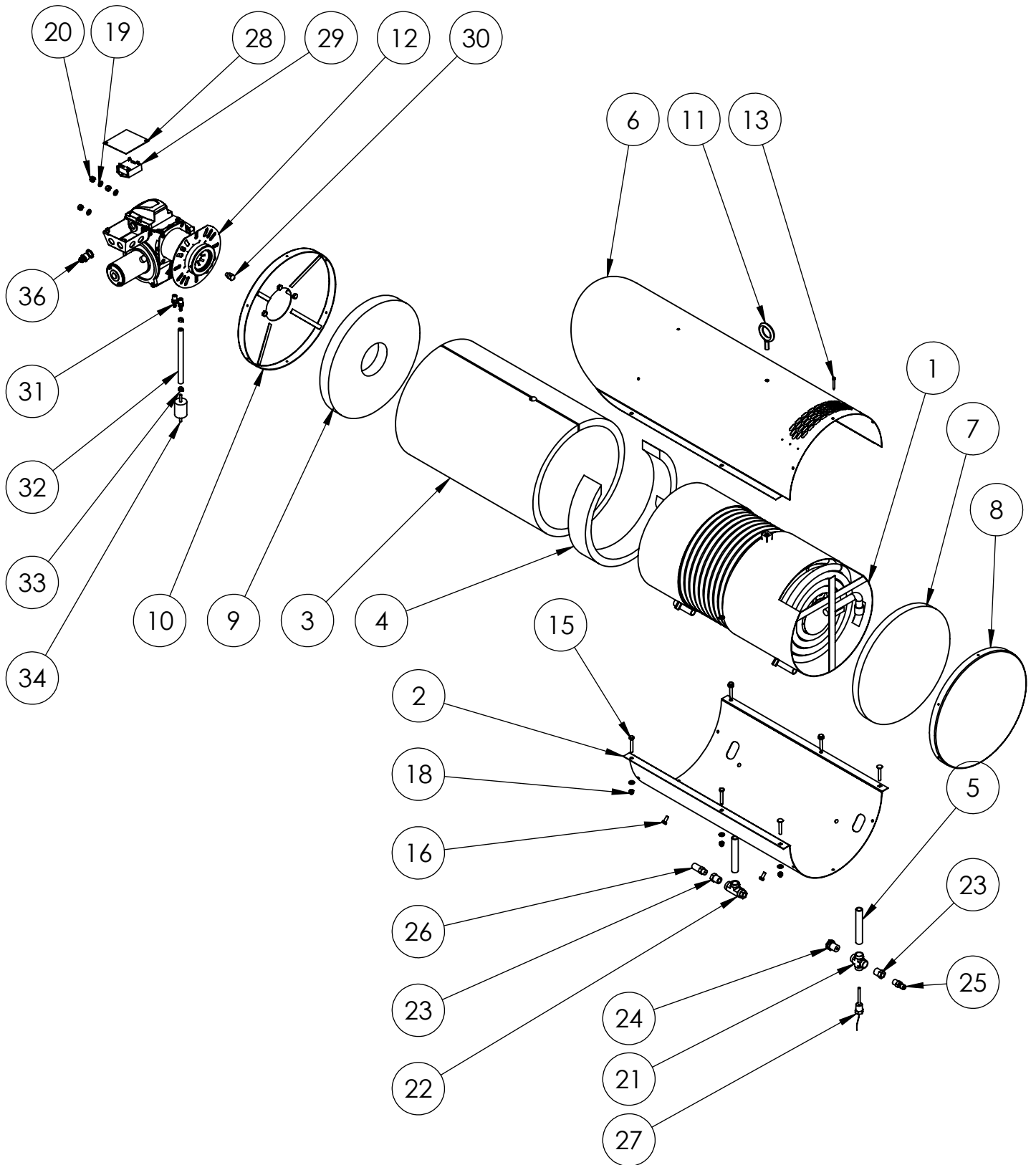
ITEM NO.	PART NUMBER	DESCRIPTION	QTY.
1	#P7080-F	FRAME, DIESEL SUPER SKID, 12V / 115V	1
2	PPPP4425-80/CS	COIL TANK ASSY, 16", 6 GPM	1
3	#S-VB5540KLDG-HW12	MOTOR PUMP ASSY	1
4	#819145AE	TANK, DIESEL FUEL, 12 GAL, BLACK	2
5	#KEL025	KIT, BATTERY WIRING	1
6	#CONTROL PANEL	DIESEL PRO SKID 12V CONTROLS	1
7	#KPL360-D	PLUMBING KIT	1

# S-VB5540KLDG-HW12

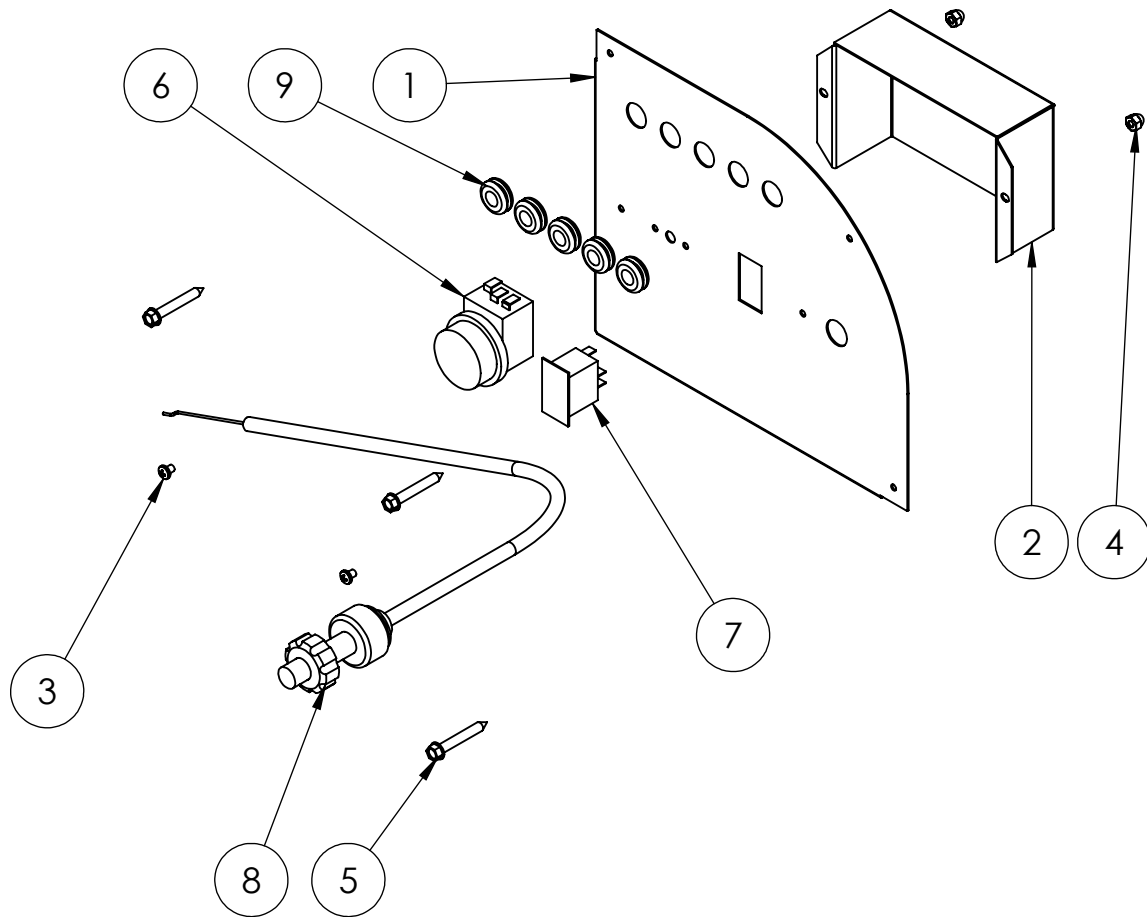


ITEM NO.	PART NUMBER	DESCRIPTION	QTY.
1	7081	BASE, DIESEL SKID, 12V, 115V	1
2	6054-F	PUMP RAIL, DIESEL SKID	1
3	6062-F	BRACKET, PUMP TENSIONER	2
4	3405D	ANGLE BOLT 3/8 X 3" WITH NUT	2
5	99-424	RUBBER GROMMET, 3/16 MATERIAL	1
6	613	2-1/2" RUBBER FOOT	6
7	6052	BELT GUARD BACK, DIESEL SKID	1
8	PA-KDW1003-1001-PP1	ENGINE, KOHLER DIESEL, 23.4 HP	1
9	TSP1821	PUMP, 5.5GPM, 1450 RPM	1
10	DRIVE KIT 16	DRIVE KIT, 2.4:1, 1420 RPM	1
11	AOD035-18	OIL DRAIN KIT, GEN/VB	1
12	1807D	TINNERMAN NUT, #10, UAB	10
13	AOD018	OIL DRAIN ASSY, KOHLER DIESEL	1
14	6053	BELT GUARD, DIESEL SKID	1
15	7089	SHIELD, RADIATOR, KOHLER W/C	1
16	ED0000-P1Z-S	M18 X 3/8 NPT ADAPTER	1
17	111 025 000 100	FLAT WASHER, USS, 1/4	4
18	111 031 200 100	FLAT WASHER, USS, 5/16	4
19	111 037 500 100	FLAT WASHER, USS, 3/8	24
20	1314D	WASHER, #10, NYLON	10
21	104 042 001 000	CARRIAGE BOLT, 1/4-20 X 1	4
22	105 061 601 250	HHCS, 3/8-16 X 1 1/4 GR5	8
23	105 061 602 000	HHCS, USS, GR5, 3/8 X 2	6
24	130 042 000 000	NYLOCK NUT, USS 1/4-20	8
25	130 061 600 000	NYLOCK NUT, USS, 3/8-16	14
26	104 042 000 750	CARRIAGE BOLT, 1/4-20 X 3/4	4
27	1317D	MACHINE SCREW, PHILLIPS HEAD, #10 X 3/8	10

PP4425-80/CS

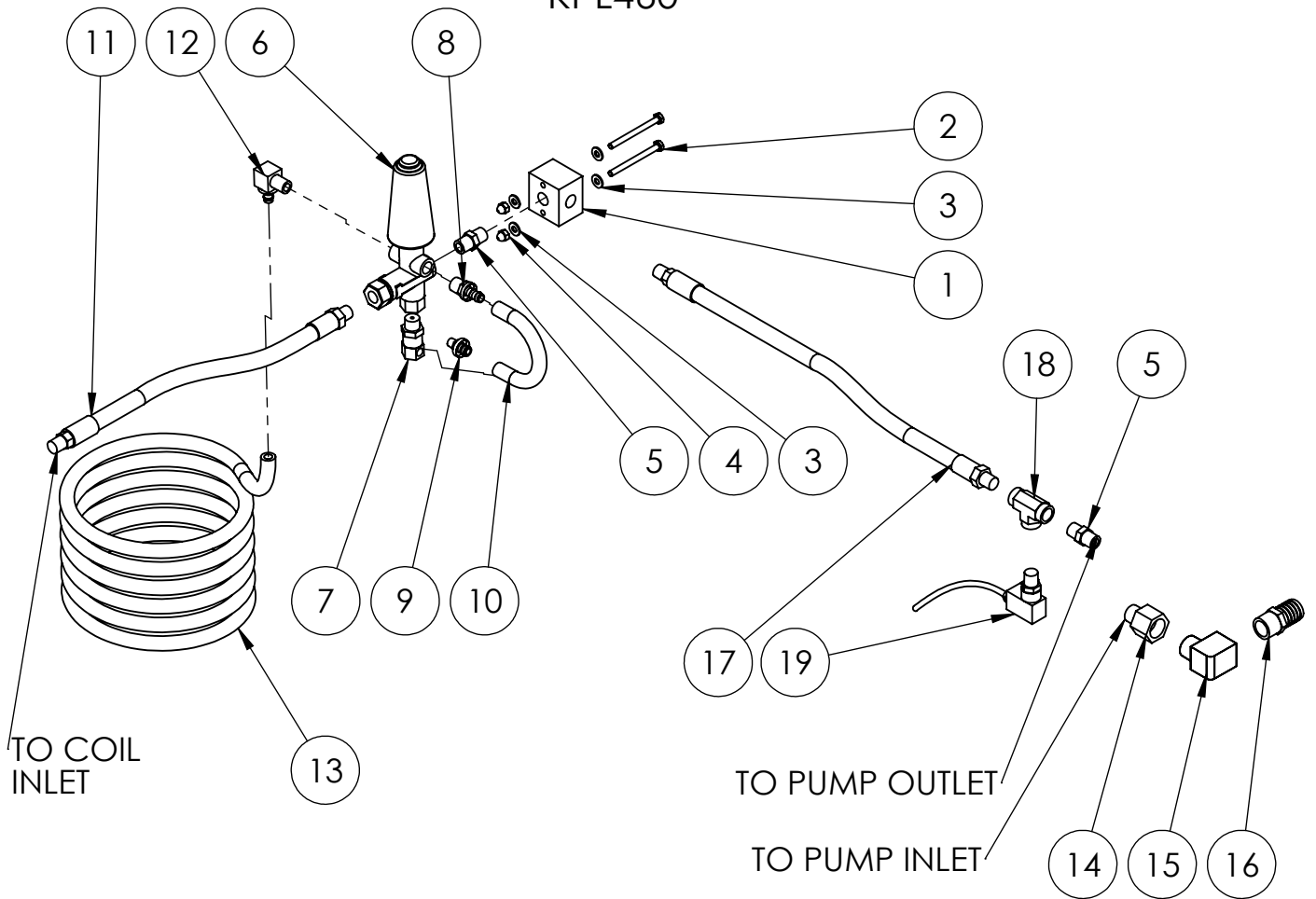


ITEM NO.	PART NUMBER	DESCRIPTION	QTY
1 #	4425-80WB	COIL, 5 PANCAKE, SCH 80, W/ COUPLING NUTS	1
2 #	7062	CLAMSHELL, LOWER, 16"	1
3	PP LKE06052T	INSULATION BLANKET, 8 LB, 24"	1
4	PP LKE06052T	INSULATION BLANKET, 8LB, 3"	1
5 #	0451	NIPPLE, 5" X SCH 160	2
6 #	7061	CLAMSHELL, UPPER, 16"	1
7	PP LKE05609T	INSULATION, EXHAUST HEAD, 18" X 1", 6 LB	1
8 #	7063-F	TANK HEAD, EXHAUST END, 16"	1
9	PP LKE06052T	INSULATION, BURNER HEAD, 8 LB, 18" X 1.5"	1
10 #	7064-F	TANK HEAD, BURNER END, 16" F&D	1
11 #	1106	EYE BOLT, 3/8" X 1	1
12 #	PRO101	ADC BURNER HEAD, 14V	1
13 #	203 141 470 750	SCREW, DRILL-TAPPING, 14 X 3/4	12
14 #	104 051 802 000	CARRIAGE BOLT, 5/16-18 X 2	2
15 #	105 051 802 000	HHCS,USS, GR5 5/16 X 2	4
16 #	105 051 800 750	HHCS, GR5, USS, 5/16-18 x 3/4	4
17 #	111 031 200 100	FLAT WASHER, USS, 5/16	14
18 #	130 051 800 000	NUT, NYLOCK, 5/16-18	6
19 #	131 037 500 100	LOCK WASHER, 3/8	3
20 #	100 061 600 000	HEX NUT, PLATED, 3/8-16	3
21 #	5652-08-08-08-08	CROSS, HP, 8FPT	1
22 #	5605-08-08-08	T, HP, 8FPTX8FPTX8FPT	1
23 #	5406-08-06	HEX BUSHING, HP, 8MPX6FP	3
24 #	RD-6500	RUPTURE DISK, LA MOT, 6500#, 250 F	1
25 #	D10009	QC PLUG, 3/8 MALE	1
26 #	PP22533A-4600	VALVE, POP OFF, 3/8 MPT	1
27 #	PP 100538	THERMOSTAT, 250 DEGREES F	1
28 #	050169007525	4 X 4 COVER	1
29 #	PW3012	LOW VOLTAGE INHIBITOR	1
30	PP 2564	NOZZLE, FUEL, 2.5 GPH, 80 DEG	1
31 #	272-04-04	HOSE BARB, 1/4M PUSH ON	2
32 #	4290-0103	HOSE, FUEL, BLACK	9 FT
33 #	12685	SPRING CLAMP, 9/16	2
34 #	33001	FUEL FILTER, 1/4", UNIVERSAL	1
35 #	12/3/SJ	WIRE, 3 WIRE, SJ	16 FT
36 #	566-DC2	ROMAX CONNECTOR, 3/8	1

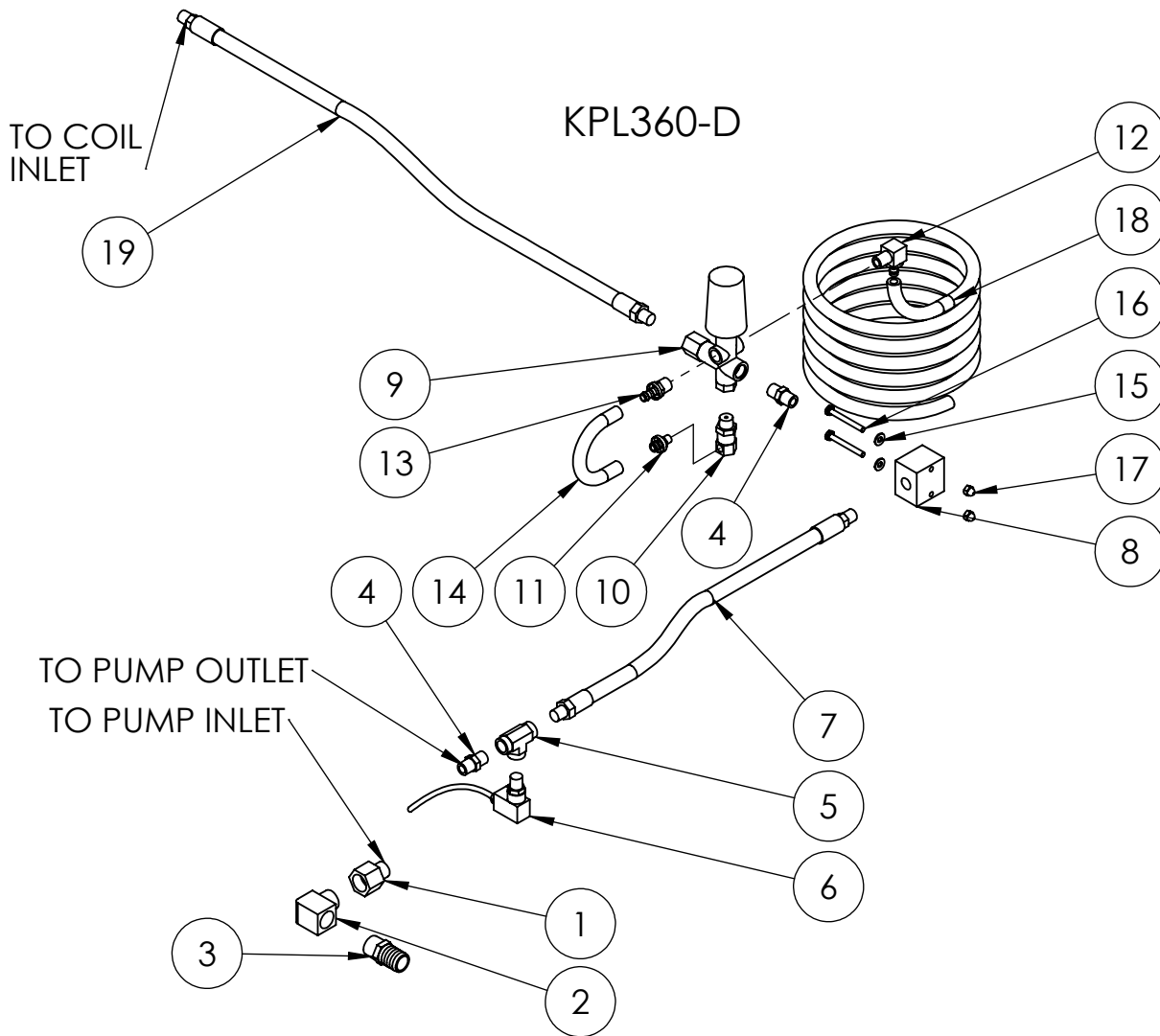


ITEM NO.	PART NUMBER	DESCRIPTION	QTY.
1	# 7092	CONTROL PANEL, DIESEL SUPER SKID	1
2	# PCA775-29	BOX, ELECTRICAL COVER, SS, SUPER SKID	1
3	# 893 102 420 750	SCREW, PAN HEAD, PH, 10-24 X 3/4" SS	2
4	# 830 102 400 000	NYLOCK NUT, 10-24, SS	2
5	# 203 141 470 750	DRILL SCREW, #14 X 3/4"	3
6	PP 100538	THERMOSTAT, 250 DEGREE	1
7	PP F04-00701	SWITCH, LIGHTED ROCKER, 12V, RED LENSE	1
8	# 953A02	CONTROL, THROTTLE, TWIST LOCK	1
9	# 2860	GROMMET, BLACK FOR 1/8 METAL	5

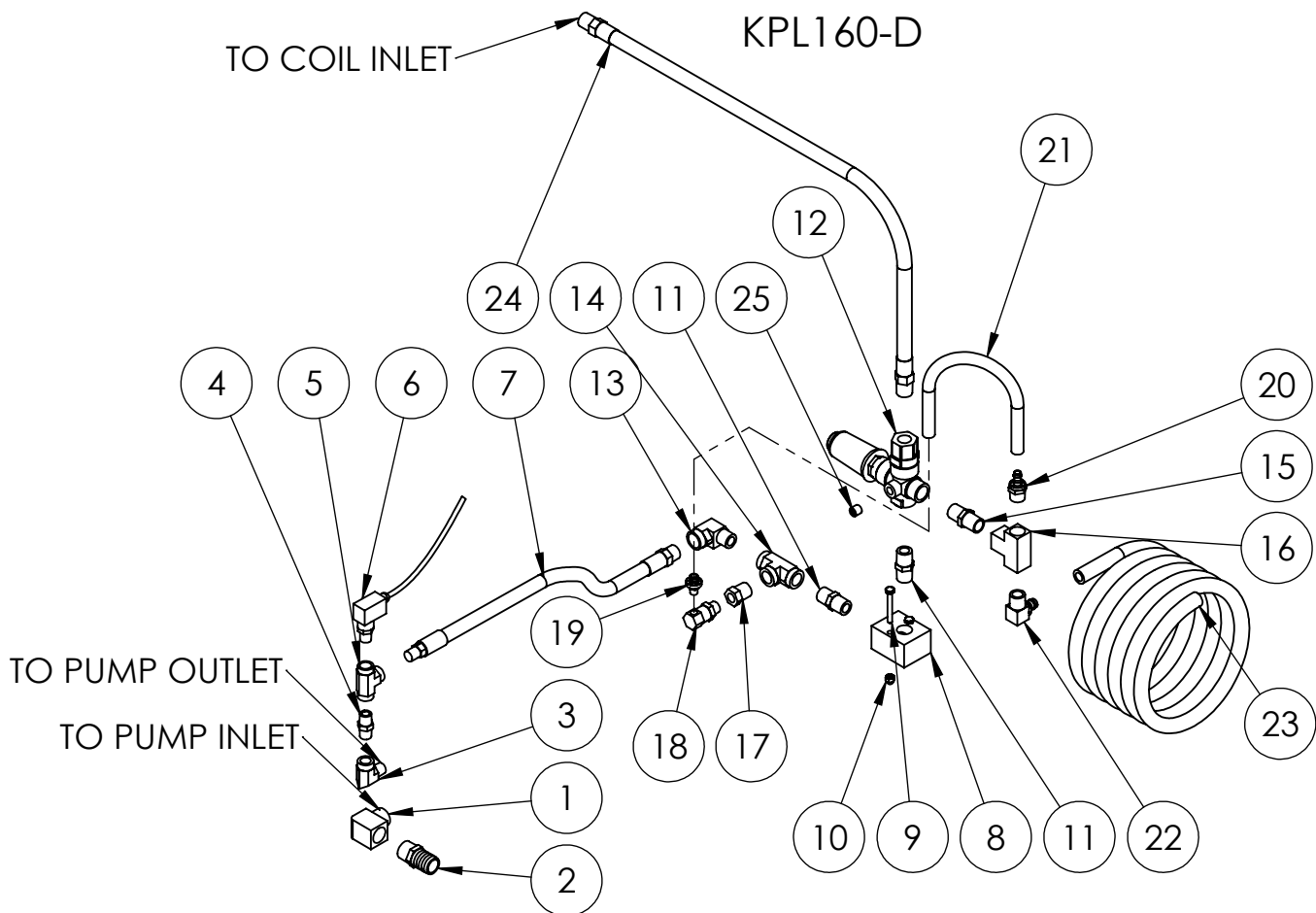
# KPL460



ITEM NO.	PART NUMBER	DESCRIPTION	QTY.
1	MB-3838S	MANIFOLD BLOCK, 3/8X3/8 (SHORT)	1
2	105 042 003 000	HHCS, 1/4-20 X 3"	2
3	111 025 000 100	FLAT WASHER, USS, 1/4	4
4	130 042 000 000	NYLOCK NUT, USS 1/4-20	2
5	5404-06-06	HEX NIPPLE, HP 6MP X 6MP	2
6	VRT3-310	AR UNLOADER, 4500 PSI	1
7	YESTVALVE	E-Z START VALVE	1
8	272-06-06	MALE PO HOSE BARB 3/8MPT X 3/8	1
9	272-06-02	HOSE BARB, PUSH ON, 3/8 X 1/8 MPT	1
10	3284-2503	HOSE, LOCK-ON, 3/8, 6LOLA PLUS(.75 FT)	1
11	HOS300-024	HOSE ASSY, 3/8 X 24", 5000 PSI	1
12	27290-06-06	HOSE BARB, PUSH ON, EL, 3/8 X 3/8 MPT	1
13	3284-2503	HOSE, LOCK-ON, 3/8" 6LOLA PLUS(10FT)	1
14	3200-12-08	ADAPTER, 3/4 FPT X 1/2 MPT	1
15	3400-12-12	ST ELL, 90 DEG, 3/4"	2
16	BM-1612	NIPPLE, BRASS HOSE, 1" BARB X 3/4 MPT	1
17	HOS300-016	HOSE ASSY, 3/8 X 16", 5000 PSI	1
18	5605-06-06-06	T, HP, 6FPTX6FPTX6FPT	1
19	YPRESSWITCH1535	PRESSURE SWITCH, 360 PSI	1

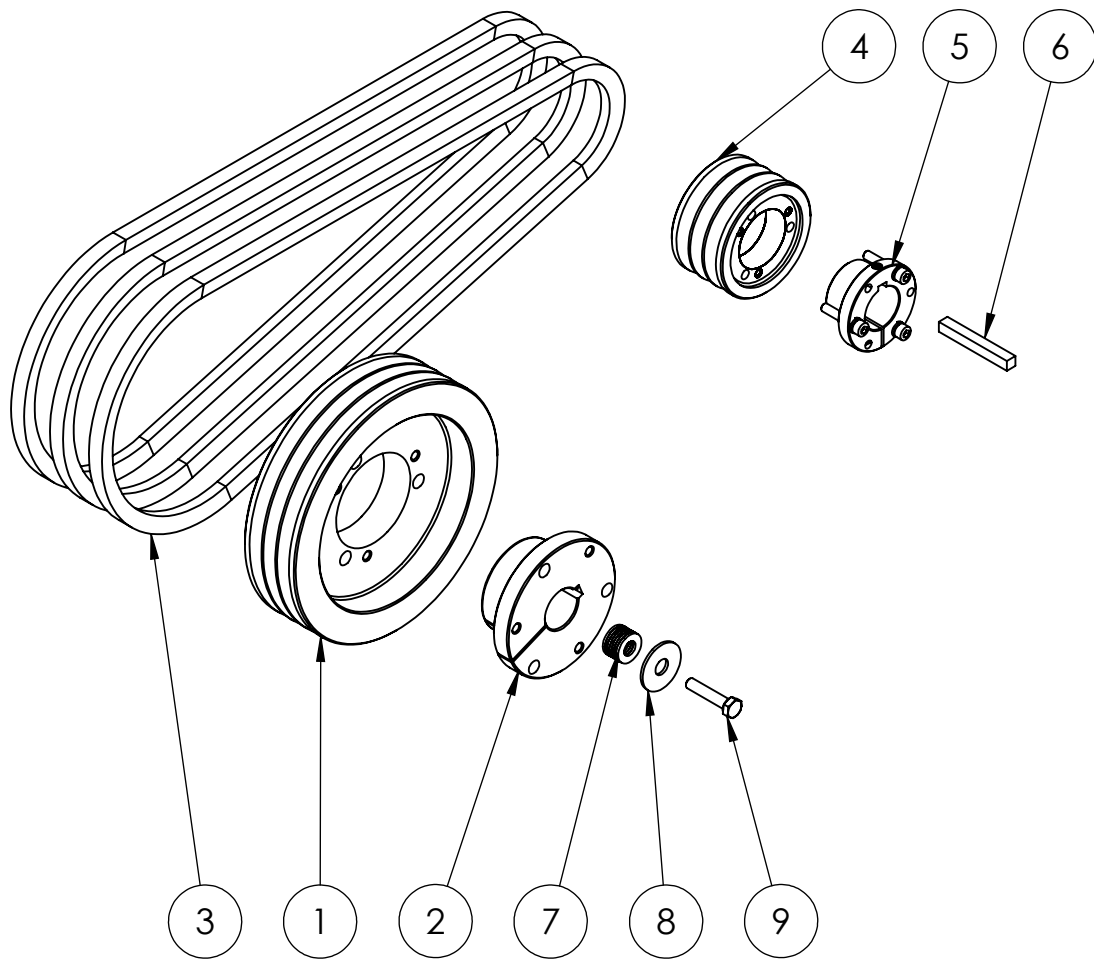


ITEM NO.	PART NUMBER	DESCRIPTION	QTY.
1 #	3200-12-08	ADAPTER, 3/4 FPT X 1/2 MPT	1
2 #	3400-12-12	ST ELL, 90 DEG, 3/4"	1
3 #	BM-1612	NIPPLE, BRASS HOSE, 1" BARB X 3/4 MPT	1
4 #	5404-06-06	HEX NIPPLE, HP 6MP X 6MP	2
5 #	5605-06-06-06	T, HP, 6FPTX6FPTX6FPT	1
6	PP YPRESSWITCH1535	PRESSURE SWITCH, 360 PSI	1
7 #	HOS300-016	HOSE ASSY, 3/8 X 16", 5000 PSI	1
8 #	MB-3838S	MANIFOLD BLOCK, 3/8X3/8 (SHORT)	1
9 #	PULSAR4KHP	UNLOADER VALVE W/EZ START	1
10	PP YESTVALVE	E-Z START VALVE	1
11	PP 272-06-02	HOSE BARB, PUSH ON, 3/8 X 1/8 MPT	1
12	27290-06-06	HOSE BARB, PUSH ON, EL, 3/8 X 3/8 MPT	1
13#	272-06-06	MALE PO HOSE BARB 3/8MPT X 3/8	1
14#	PP 3284-2503	HOSE, LOCK-ON, 3/8, 6LOLA PLUS(.75 FT)	1
15#	111 025 000 100	FLAT WASHER, USS, 1/4	2
16#	105 042 002 250	HHCS USS GR5 1/4 X 2 1/4	2
17#	130 042 000 000	NYLOCK NUT, USS 1/4-20	2
18	PP 3284-2503	HOSE, LOCK-ON, 3/8" 6LOLA PLUS(10FT)	1
19#	HOS300-031	HOSE ASSY, 3/8 X 31", 5000 PSI	1



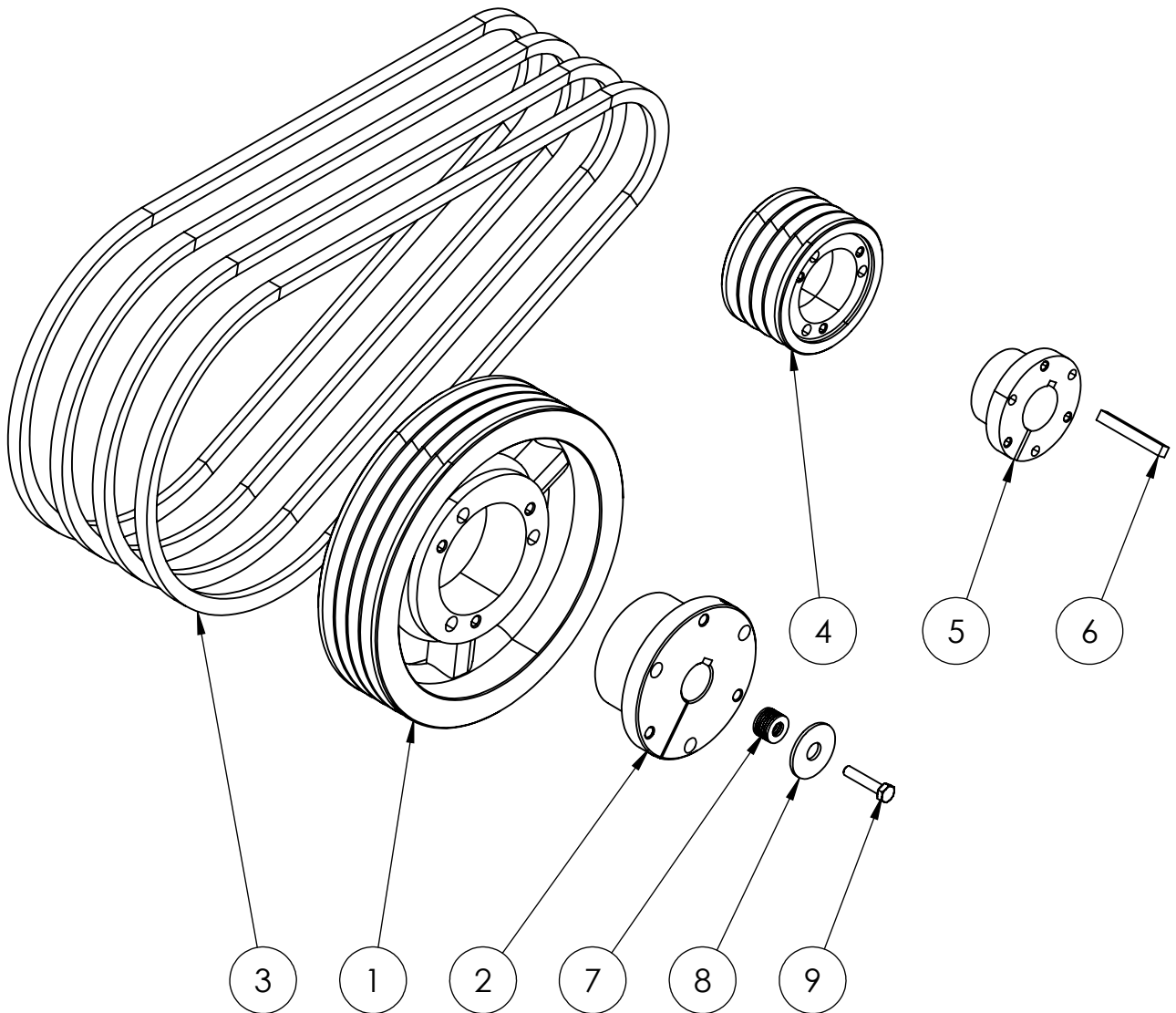
ITEM NO.	PART NUMBER	DESCRIPTION	QTY.
1	3400-12-12	ST ELL, 90 DEG, 3/4"	1
2	BM-1612	NIPPLE, BRASS HOSE, 1" BARB X 3/4 MPT	1
3	5502-06-06	HP ST ELL 90 3/8BSPP X 3/8BSPP	1
4	5404-06-06	HEX NIPPLE, HP 6MP X 6MP	1
5	5605-06-06-06	T, HP, 6FPTX6FPTX6FPT	1
6	YPRESSWITCH1535	PRESSURE SWITCH, 360 PSI	1
7	HOS500-018-8MPX6MP	HOSE ASSY, 1/2" X 18", 4000 PSI, 8MPX X 6MP	1
8	MB-5050	MANIFOLD BLOCK, 1/2 X 1/2	1
9	105 042 002 000	HHCS, 1/4-20 X 2"	2
10	130 042 000 000	NYLOCK NUT, USS 1/4-20	2
11	5404-08-08	HEX NIPPLE, HP 8MP X 8MP	2
12	YVB4021B	UNLOADER VALVE, 21 GPM @ 4050PSI	1
13	5502-08-08	HP ST ELL 90 8MP X 8FP	1
14	5605-08-08-08	T, HP, 8FPTX8FPTX8FPT	1
15	3325-08-08	HEX NIPPLE, 1/2"	1
16	3700-08-08-08	T, FEMALE, 1/2"	1
17	5406-08-06	HEX BUSHING, HP, 8MPX6FP	1
18	YESTVALVE	E-Z START VALVE	1
19	272-06-02	HOSE BARB, PUSH ON, 3/8 X 1/8 MPT	1
20	272-06-08	MALE PO HOSE BARB 1/2 MPT X 3/8 HOSE	1
21	3284-2503	HOSE, LOC-ON, 3/8", 1 FT	1
22	27290-08-08	HOSE BARB, PUSH ON, EL, 1/2 X 1/2 MPT	1
23	3284-2504	HOSE, LOCK ON, 1/2", 8LOLA PLUS(10FT)	1
24	HOS500-036-8MPX-2	HOSE ASSY, 1/2 X 36, PC4000, BLACK	1
25	3162-04	PLUG, COUNTERSUNK, 1/4"	1

# KDR326



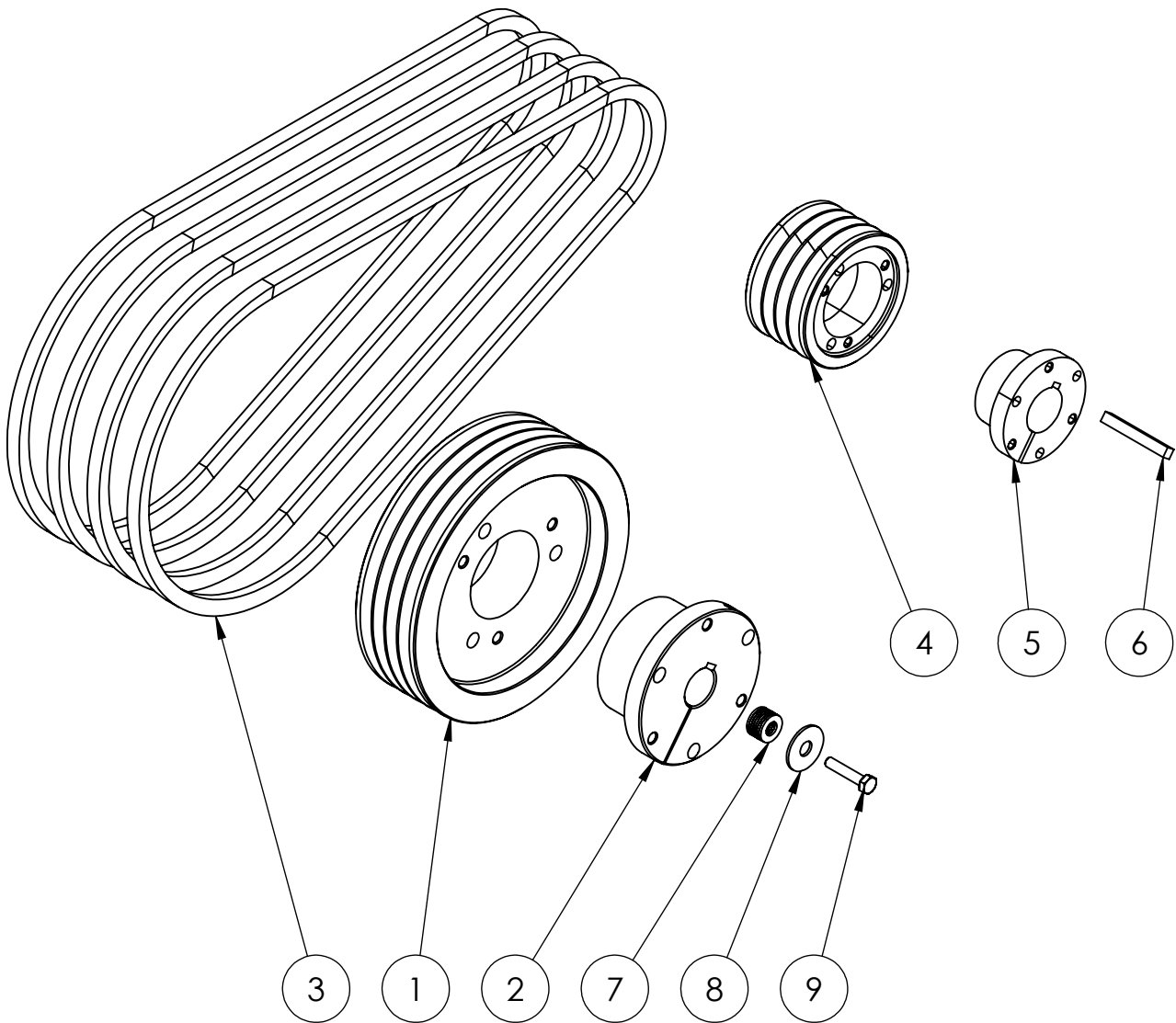
ITEM NO.	PART NUMBER	DESCRIPTION	QTY.
1	3-3V600 SDS	SHEAVE, 3VX, 3GR.6.00 DIA	1
2	SDS-24MM	BUSHING, 24MM,	1
3	3VX400	V BELT SUPER HC, 40"	3
4	3-3V2.65	SHEAVE, 2.65" OD, 3GR, JA STYLE	1
5	JA-1	BUSHING, 1", JA	1
6	PKY020	KEY, DRIVE, 1/4 X 2	1
7	111 031 200 100	FLAT WASHER, USS, 5/16	7
8	121 025 001 250	FENDER WASHER, 1/4 X 1-1/4	1
9	005 933 006 030	METRIC CAP SCREW, M6 -1 X 30	1

# DRIVE KIT 16



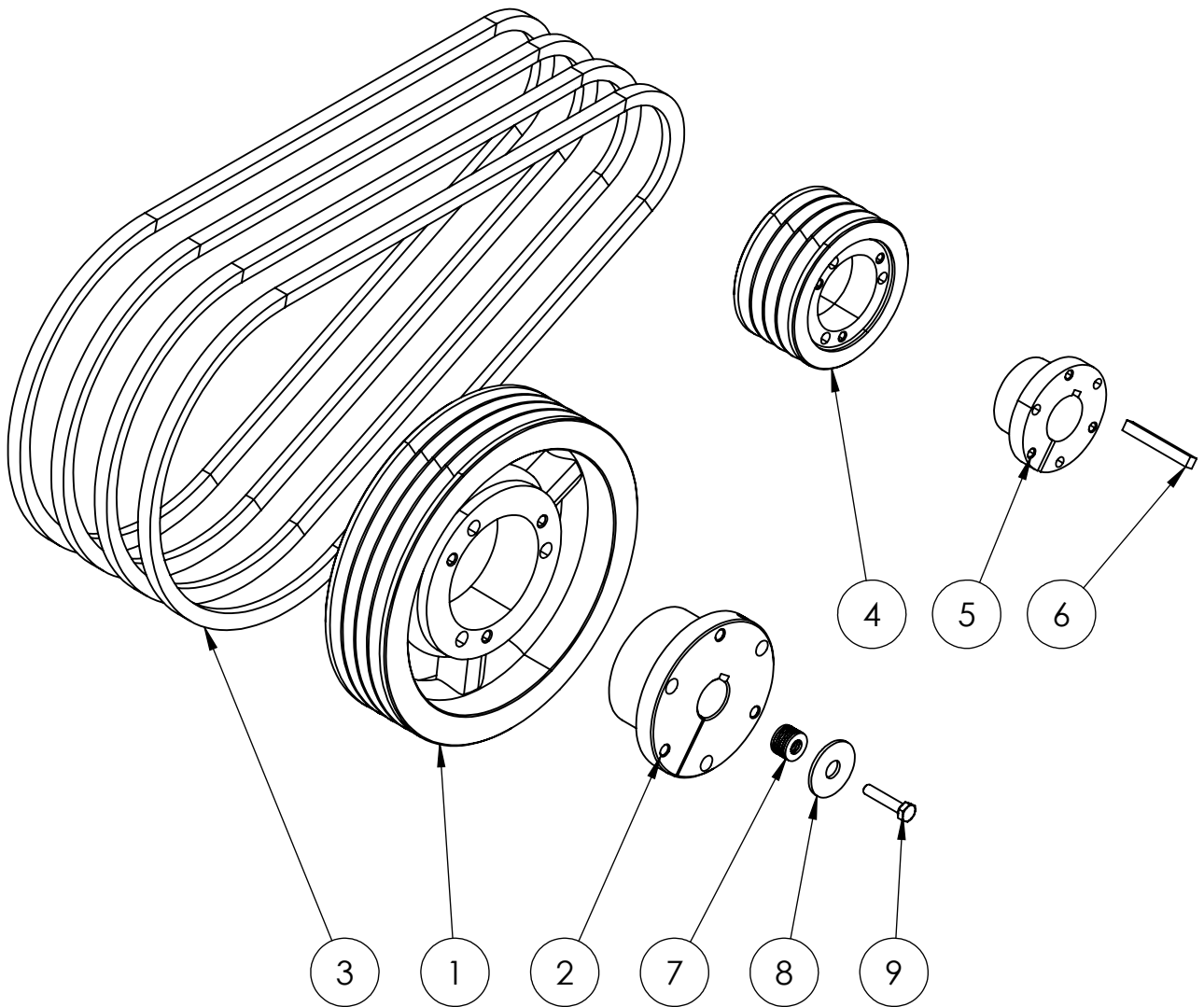
ITEM NO.	PART NUMBER	DESCRIPTION	QTY.
1	4-3V8.00	SHEAVE, 4 GR 8.00" DIA	1
2	SK-24MM	BUSHING, SK, 24MM	1
3	3VX475	V BELT SUPER HC, 47.5"	4
4	4-3V3.35	SHEAVE, 4 GR, 3.35" DIA, SH STYLE	1
5	SHX1-1_8	BUSHING, SH STYLE, 1 1/8" BORE	1
6	PKY020	KEY, DRIVE, 1/4 X 2	1
7	111 031 200 100	FLAT WASHER, USS, 5/16	7
8	121 025 001 250	WASHER, FENDER, 1/4 X 1 1/4	1
9	005 933 006 030	METRIC CAP SCREW, M6 -1 X 30	1

# DRIVE KIT 17



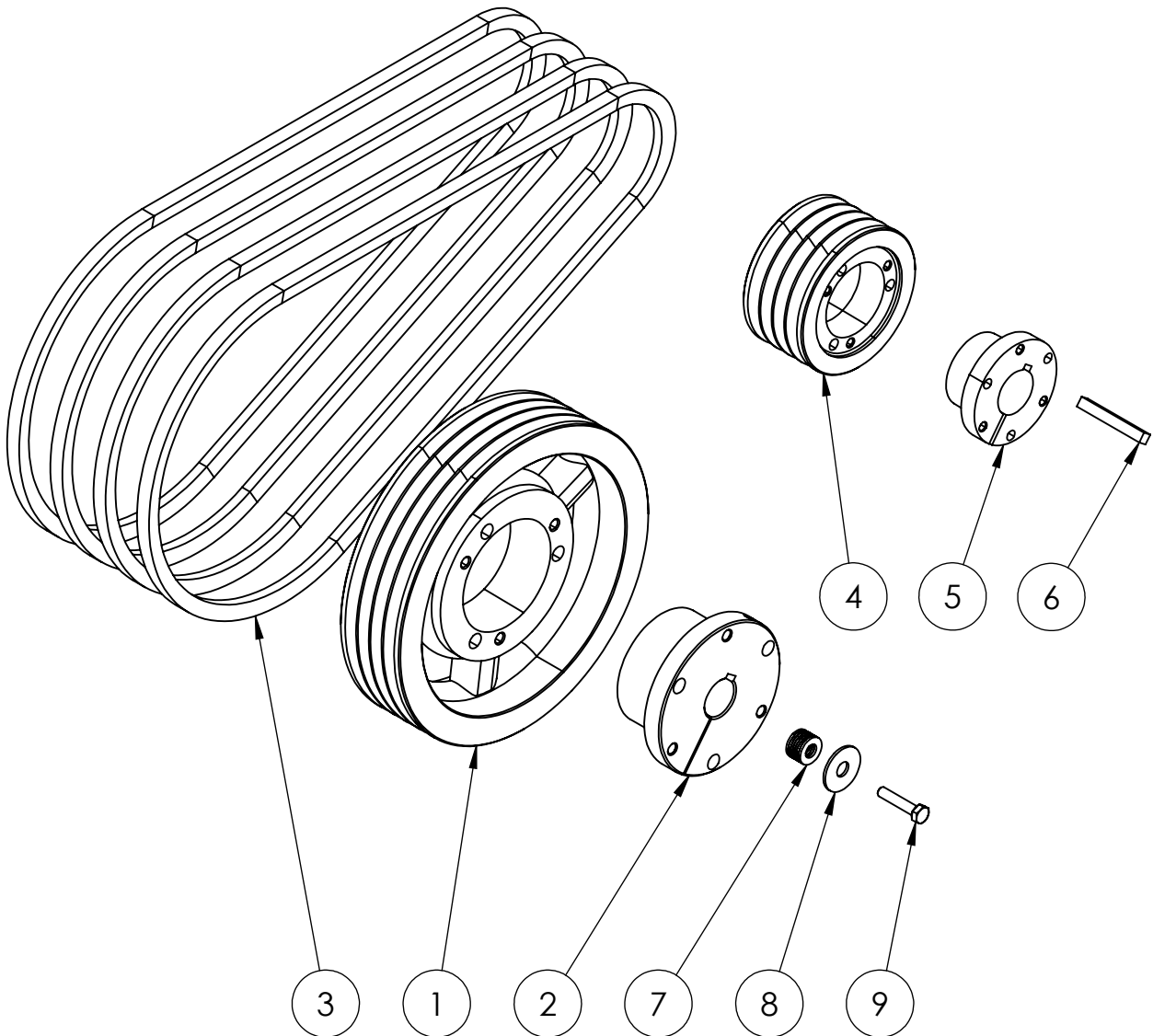
ITEM NO.	PART NUMBER	DESCRIPTION	QTY.
1	4-3V600 SK	PULLEY, 4GROOVE, 3V, 6.90" DIA.	1
2	SK-24MM	BUSHING, SK, 24MM	1
3	3VX450	V BELT, SUPER HC, 45"	4
4	4-3V3.00	SHEAVE, 4 GR, 3.35" DIA, SH STYLE	1
5	SHX1-1_8	BUSHING, SH STYLE, 1 1/8" BORE	1
6	PKY020	KEY, DRIVE, 1/4 X 2	1
7	111 031 200 100	FLAT WASHER, USS, 5/16	7
8	121 025 001 250	FENDER WASHER, 1/4 X 1-1/4	1
9	005 933 006 030	METRIC CAP SCREW, M6 -1 X 30	1

# DRIVE KIT 18



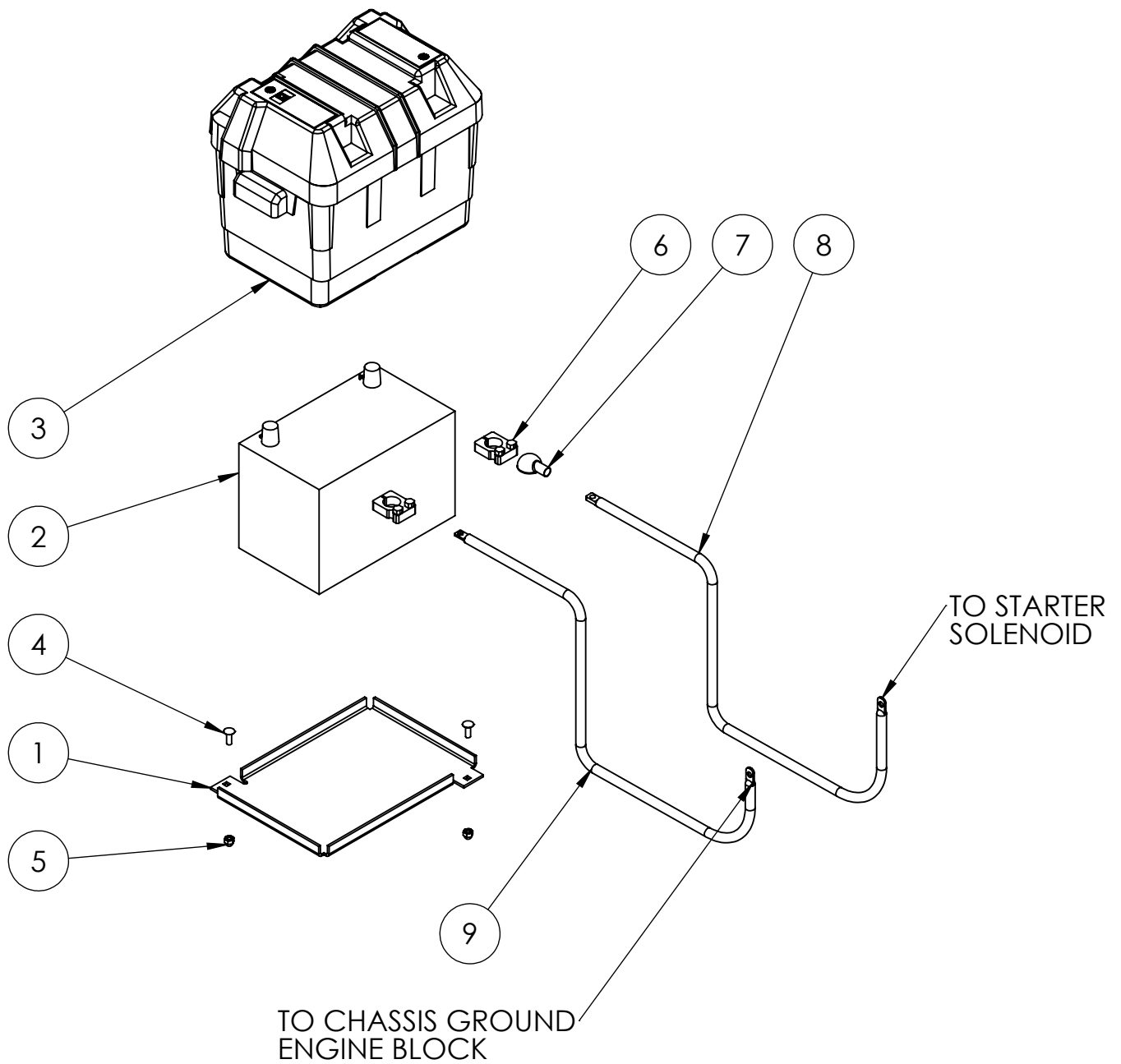
ITEM NO.	PART NUMBER	DESCRIPTION	QTY.
1	4-3V8.00	SHEAVE, 4 GR 8.00" DIA	1
2	SK-24MM	BUSHING, SK, 24MM	1
3	3VX500	V BELT SUPER HC, 50.0"	4
4	4-3V3.65	SHEAVE, 4 GROOVE, 3.65" DIA	1
5	SHX1-1_8	BUSHING, SH STYLE, 1 1/8" BORE	1
6	PKY020	KEY, DRIVE, 1/4 X 2	1
7	111 031 200 100	FLAT WASHER, USS, 5/16	7
8	121 025 001 250	WASHER, FENDER, 1/4 X 1 1/4	1
9	005 933 006 030	METRIC CAP SCREW, M6 -1 X 30	1

## DRIVE KIT 19

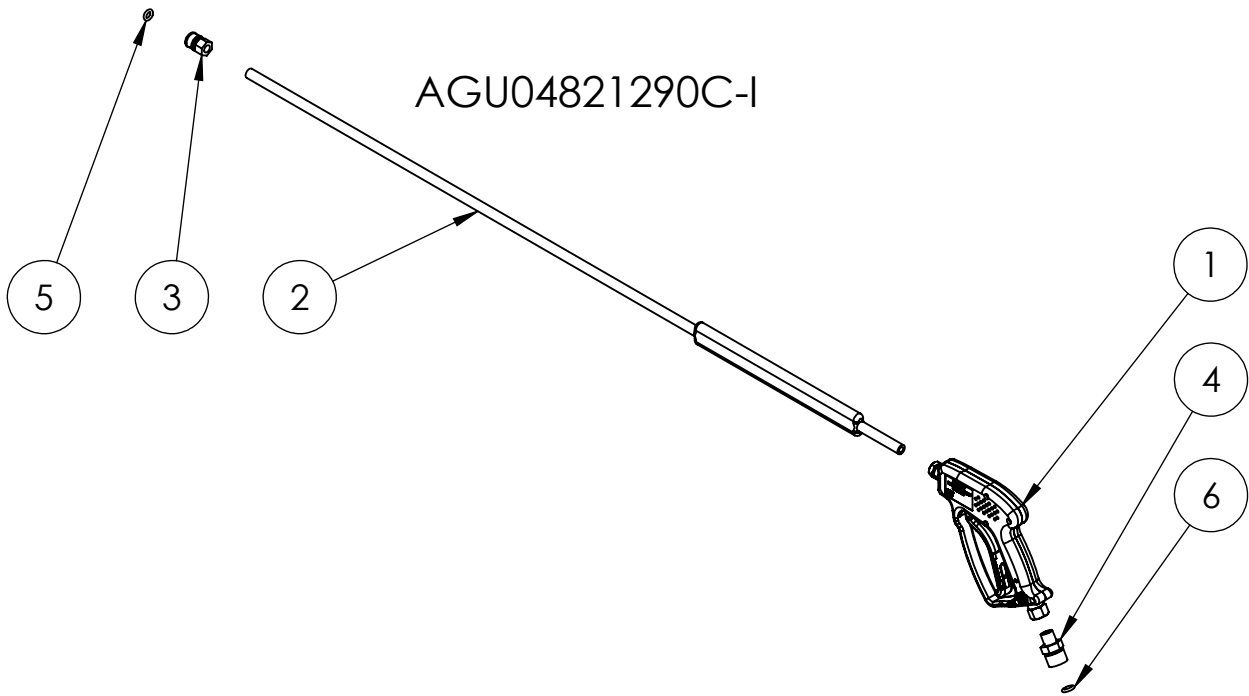


ITEM NO.	PART NUMBER	DESCRIPTION	QTY.
1	4-3V8.00	SHEAVE, 4 GR 8.00" DIA	1
2	SK-24MM	BUSHING, SK, 24MM	1
3	3VX500	V BELT SUPER HC, 50.0"	4
4	4-3V4.12	SHEAVE, 4 GROOVE, 4.12" DIA	1
5	SHX1-1_8	BUSHING, SH STYLE, 1 1/8" BORE	1
6	PKY020	KEY, DRIVE, 1/4 X 2	1
7	111 031 200 100	FLAT WASHER, USS, 5/16	7
8	121 025 001 250	FENDER WASHER, 1/4 X 1-1/4	1
9	005 933 006 030	METRIC CAP SCREW, M6 -1 X 30	1

# KEL025

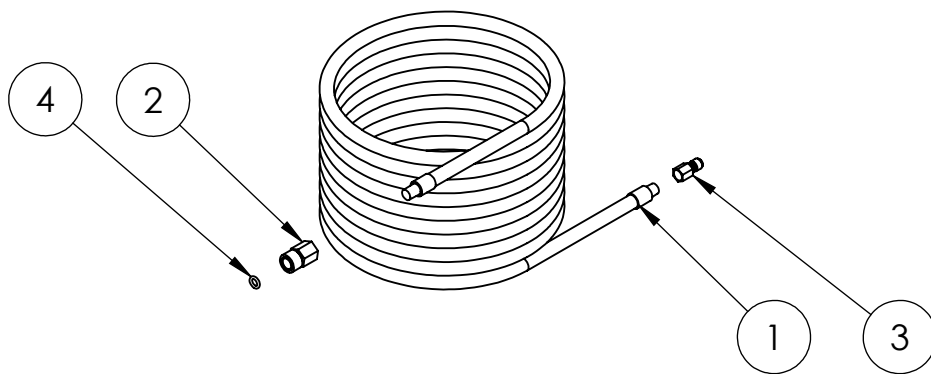


ITEM NO.	PART NUMBER	DESCRIPTION	QTY.
1	9879	TRAY, BATTERY BOX, LARGE, GROUP 24	1
2	VL58	BATTERY	1
3	9065-1	BOX, BATTERY, LARGE, (GP24)	1
4	104 042 000 750	CARRIAGE BOLT, 1/4-20 X 3/4	2
5	130 042 000 000	NYLOCK NUT, USS 1/4-20	2
6	00369	TERMINAL, UNIVERSAL BATTERY	2
7	5719-025R	TERMINAL PROTECTOR, RED, 6 GA	1
8	PRO40	CABLE, BATTERY, 6AWG, RED, 40"	1
9	PRO35	CABLE, BATTERY, 6AWG, BLACK, 35"	1

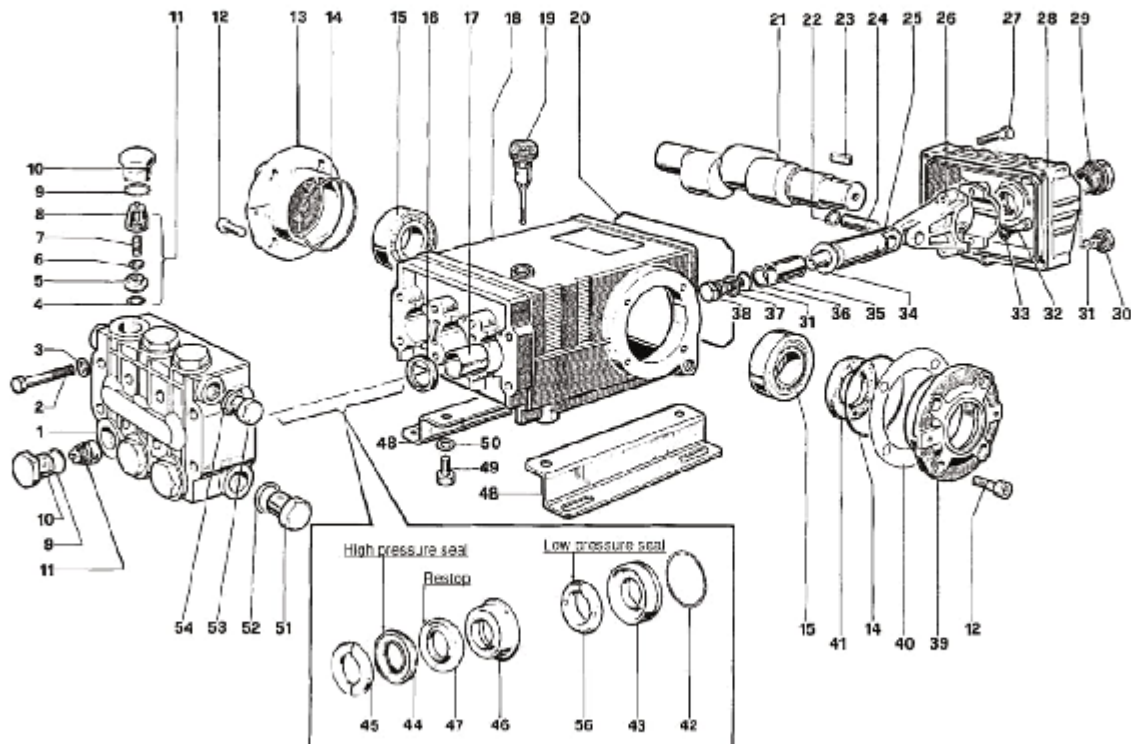


ITEM NO.	PART NUMBER	DESCRIPTION	QTY
1	21290C	GUN VALVE, 10 GPM, 5000 PSI	1
2	DL471CS	WAND, PLATED STEEL, 48", INSULATED GRIP	1
3	D10001	QC SOCKET 1/4 FEMALE	1
4	D10004	QC SOCKET, 3/8 MALE	1
5	OR-110-VT-75-BROWN	ORING, VITON FOR 1/4" QC	1
6	OR-112-VT-75-BROWN	ORING, VITON FOR 3/8" QC	1

### CHA0501BB



ITEM NO.	PART NUMBER	DESCRIPTION	QTY
1	AF42-06BK-050LBR	HOSE ASSY, 3/8" X 50', BLACK	1
2	D10003	QC SOCKET 3/8 FEMALE	1
3	D11008	QC PLUG, 3/8 FEMALE	1
4	OR-112-VT-75-BROWN	ORING, VITON FOR 3/8" QC	1



## PARTS LIST

ITEM	PART NO.	DESCRIPTION	KIT NO.	QTY.	ITEM	PART NO.	DESCRIPTION	KIT NO.	QTY.	ITEM	PART NO.	DESCRIPTION	KIT NO.	QTY.
1.	47121741	Manifold		1	19.	96210600	Oil Dip Stick		1	37.	98728000	Washer	6	3
2.	99320600	Screw, M8 x 70		8	20.	90392200	O-ring, Cover		1	38.	47219566	Screw, Plunger	6	3
3.	96702000	Washer, M8.4		8	21.	47021735	Crankshaft, TSS1021		1	39.	47150022	Cover, Crankcase		3
4.	701115	O-ring, .674 x .10	1	8		47021835	Crankshaft, TSS1511		1	40.	97567800	Shim		2
5.	36200366	Seat, Valve	1	6	22.	90055700	Ring, Snap		6	41.	90164800	Seal, Oil	3	1
6.	36200176	Plate, Valve	1	6	23.	91499000	Key		1	42.	90361600	O-ring, 1.304x.070	10,28	3
7.	94737600	Spring	1	6	24.	97738000	Pin, Wrist		3	43.	47080570	Retainer, Packing	10,28	3
8.	36200251	Guide, Valve	1	6	25.	47050554	Guide, Plunger		3	44.	90270500	Packing	28,69	3
9.	701002	O-ring, .797x.103	4,5	6	26.	47030001	Connecting Rod		3	45.	47100051	Ring, Head, M20	7,28	3
10.	98222800	Cap	4	6	27.	99191200	Screw M6x30		5	46.	47216970	Intermed. Ring	28,71	3
11.	36703201	Valve Assembly	1	6	28.	47150122	Cover, Crankcase		1	47.	90270400	Restop Ring	28,69	71
12.	99303900	Screw, M8 x 16		8	29.	97596600	Oil Indicator		1	48.	47200074	Pump Feet		2
13.	47150122	Cover, Crankcase Side	1		30.	96204100	Cap		1	49.	99364400	Screw, M10 x 18		4
14.	701147	O-ring, 2.875x.103	2		31.	701013	O-ring, .426x.070	6	4	50.	96710600	Washer, M10.2		4
15.	640047	Bearing, Roller	2		32.	96309900	Screw M8 x 35		6	51.	98217600	Cap		1
16.	90162500	Seal, Oil	2		33.	96701400	Washer, M8.4		6	52.	96751400	Washer, M21.5		1
17.	90912600	Bushing	3		34.	96728600	Washer, M14	6	3	53.	98210000	Cap		1
18.	47010522	Crankcase	1		35.	47040409	Plunger, 20 mm		3	54.	98738000	Washer, M17.5		1
					36.	660067	Ring, Back-up	6	3	55.	90271000	Seal, Low Press, 20 mm	28,69	3

## REPAIR KITS

KIT NO.	K01	K02	K03	K04F	K06	K07	K10	K23	K69	K71
ITEM NO'S INCLUDED IN KIT	4,5,6 7,8 (11)	16	41	9, 10	31,34,36 37,38	45	42, 43	42, 43 44, 45 46,47,56	44, 47 56	46, 47
NUMBER OF ASSEMBLIES IN KIT	6	3	2	6	3	6	3	1	3	3
NUMBER OF CYLINDERS KIT WILL SERVICE	3	3	-	3	3	3	3	1	3	3

## TORQUE SPECS\*

Pos.	Ft/lb	N-M
2	22.1	30
10	95.9	130
12	14.7	20
27	7.3	10
29	8.8	12
30	14.7	20
32	14.7	20
38	14.7	20
49	29.4	40
51	29.4	40

\* Decrease torque by 20% if threads are lubricated

Ref 300896 Rev. D  
06-16

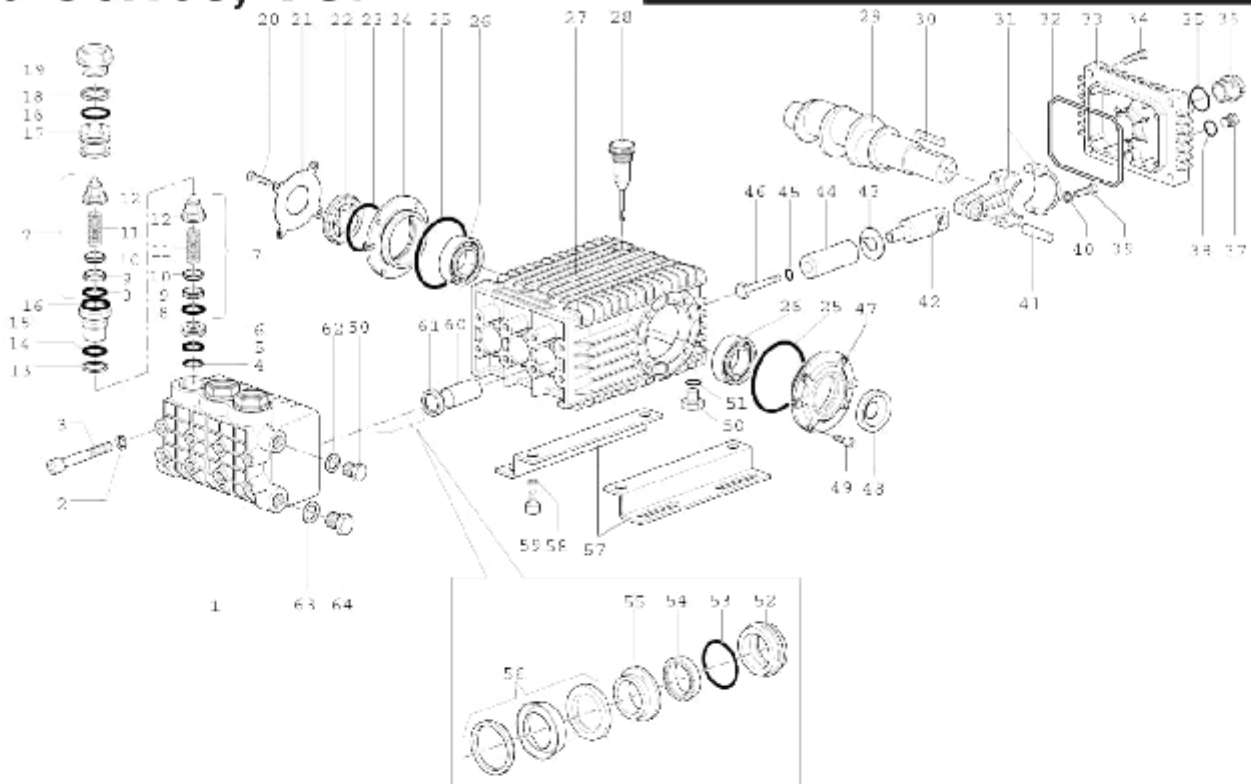
**GENERAL PUMP** 1174 Northland Drive • Mendota Heights, MN 55120  
Phone: 651.686.2199 • Fax: 800.535.1745 • e-mail: sales@gpcompanies.com • www.generalpump.com



# TSS1511

# 66 Series, TSP

**GENERAL PUMP** *A member of the Interpump Group*



## REPAIR KITS

ITEM	PART NO.	DESCRIPTION	QTY.	ITEM	PART NO.	DESCRIPTION	QTY.	ITEM	PART NO.	DESCRIPTION	QTY.
1.	56121041	Manifold 16mm	1	24.	56150122	Side Cover	2	46.	56219566	Plunger Bolt	3
	56121141	Manifold 13mm	1	25.	701147	O-ring 67.95 x 2.62	2	47.	56150022	Side Cover, PTO	1
2.	96710400	Washer M1C	8	26.	91838000	Bearing	1	48.	90154800	Seal, Shaft 30 x 55 x 7	1
3.	99382000	Headbolt M10 x 120	8	27.	56010022	Crankcase	1	49.	99303900	Screw M8 x 16	4
4.	90511800	Anti-ext ring	3	28.	98210600	Dipstick, vented	1	50.	98210000	Plug 3/8 x 13	2
5.	90359600	O-ring 18.77 x 1.78	3	29.	56020435	Crankshaft TSP1621	1	51.	90383300	O-ring 13.95 x 2.62	1
6.	50210270	Spacer M12	3		56020035	Crankshaft TSP1819		52.	50090270	Seal Retainer 16mm	3
7.	36712101	Valve Assy., Complete	6	30.	91489200	Key	1		56080370	Seal Retainer 13mm	
8.	701115	O-ring 17.13 x 2.62	6	31.	56030001	Connecting Rod	3	53.	90381800	O-ring 34.65 x 1.78	3
9.	36200366	Valve Seal	6	32.	90392200	O-ring 133.02 x 2.62	1	54.	90263100	LP Seal 16mm	3
10.	36203266	Valve Poppet	6	33.	56150000	Cover, Crankcase	1		90255200	LP Seal 18mm	
11.	94737600	Valve Spring	6	34.	99188400	Screw M6 x 20	4	55.	56216270	Intermediate Ring 16mm	3
12.	36202551	Valve Guide	6	35.	90405100	O-ring 26.58 x 3.53	1		56216370	Intermediate Ring 18mm	
13.	90511500	Anti-ext ring	3	36.	53210051	Sightglass, Bayonet style	1	56.	90263400	HP Seal 15mm	3
14.	90384300	O-ring 17.86 x 2.62	3	37.	98204100	Plug, G1/4" x 9	1		90263500	HP Seal 13mm	
15.	56210166	Bushing	3	38.	90358500	O-ring 10.82 x 1.78	1	57.	47200074	Pump Rail	2
16.	90395700	O-ring 23.81 x 2.62	6	39.	99309900	Screw M8 x 35	6	58.	96710600	Washer M1C	4
17.	56210070	Plug 19mm	3	40.	96701400	Locking Washer M8	6	59.	99364400	Screw M10 x 18	4
18.	90516500	Anti-ext ring	3	41.	97740500	Wrist Fir	3	60.	90912600	Guide Bushing	3
19.	56130141	Valve Cap	3	42.	56050064	Piston Guide	3	61.	90162500	Seal, Pl. Rod 22 x 32 x 5.5	3
20.	99306900	Screw M8 x 25	4	43.	96710100	Flinger Washer	3	62.	96738000	Gasket, Aluminum 3/8"	1
21.	56150274	Cover	1	44.	56040209	Plunger 16 x 54	3	63.	96751400	Gasket, Aluminum 1/2"	1
22.	44211801	Spacer, Sightglass	1		56040309	Plunger 18 x 54		64.	98217600	Plug, G1/2" x 10	1
23.	90409700	O-ring 55.56 x 3.53	1	45.	701013	O-ring 10.82 x 1.78	3				

## REPAIR KITS

Kit No.	TORQUE SPECS*						
	K02	K03	K15066	K174 (10mm)	K175 (16mm)	K180 (16mm)	K176 (10mm)
Pos. No.s Included In Kit	61	48	8, 9, 10, 11, 12, 13, 14, 16, 18 (7)	54, 56	52, 53, 54, 55, 56	54, 56	52, 53, 54, 55, 56
Number of Assemblies In Kit	3	1	6	3	1	3	1
Number of Cylinders Kit Will Service	3	N/A	3	3	1	3	1

## TORQUE SPECS\*

Item	N-M	Ft-lbs
3	45	33.2
19	130	95.9
20	20	14.8
34	10	7.4
37	20	14.8
39	20	14.0
46**	20	14.8
49	20	14.8
50	40	29.5
59	40	29.5

\*Decrease torque by 20% if threads are lubricated.

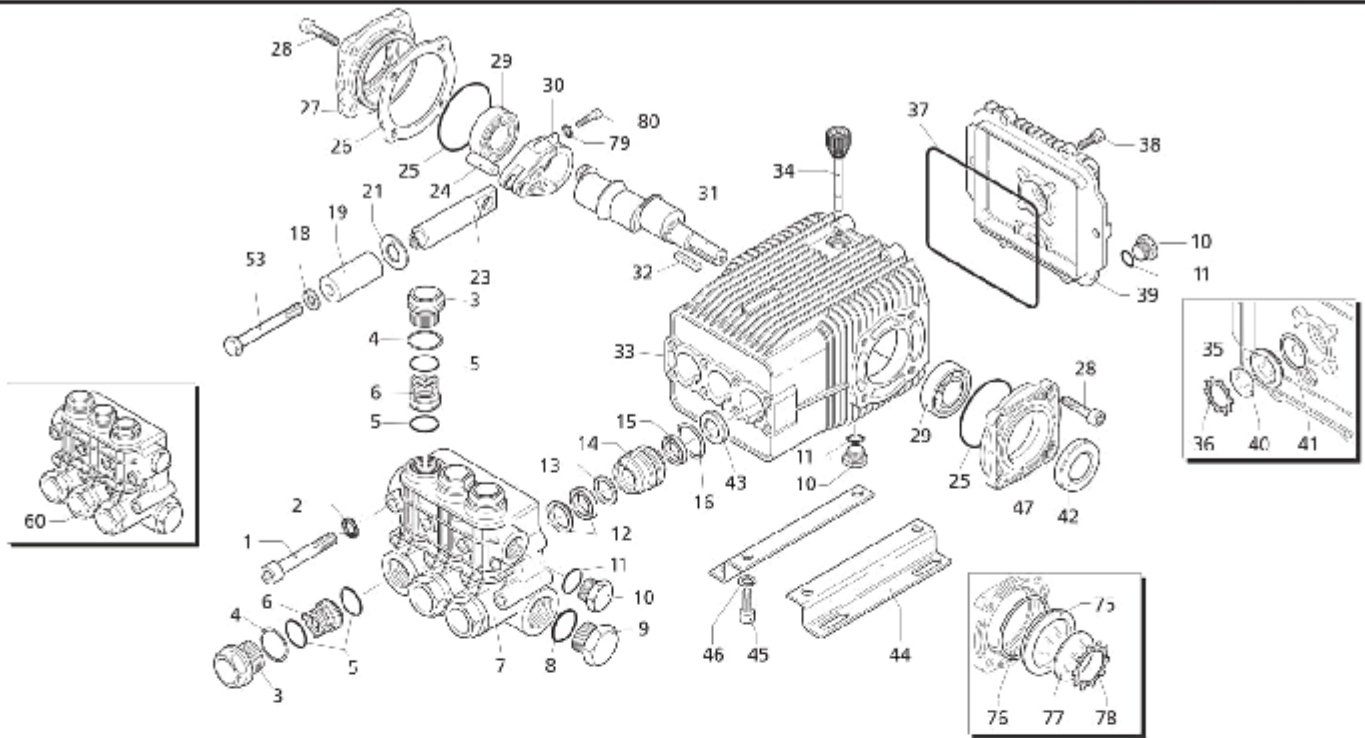
**GENERAL PUMP** 1174 Northland Drive • Mendota Heights, MN 55120

Phone: 651.686.2199 • Fax: 800.535.1745 • e-mail: sales@gpcompanies.com • www.generalpump.com

Ref 310046 Rev. K  
06-16

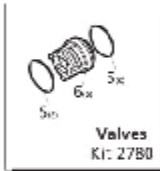


TSP1821=18mm BORE



Repair Kits

Special Parts / Kits



Code	Description	Qty
980069	Packing extractor	1
2748	Rail kit 1/4" 2Pals 4Bolts 4Washes	1

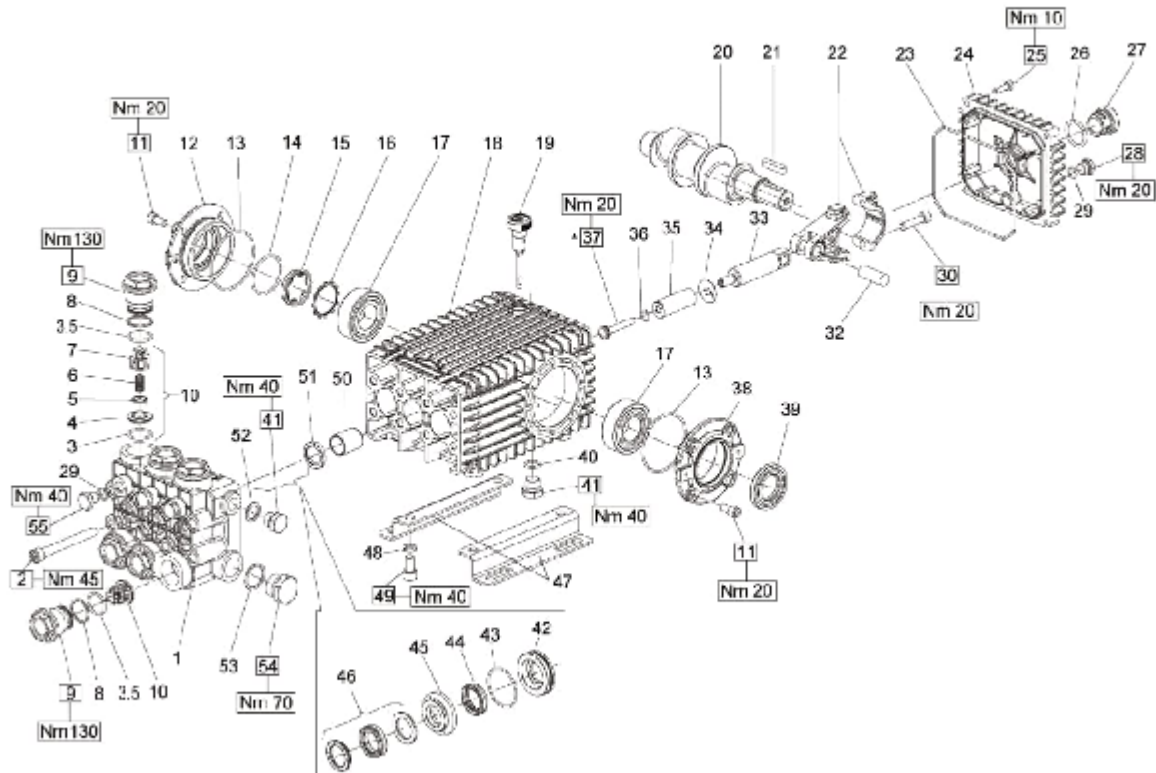
Pos	Code	Description	Qty	Pos	Code	Description	Qty	
1	194C250	Head bolt M10x80	(442 in/lbs) 8	34	114C370	Oil cap	1	
2	65C530	Lockwasher	8	35	126C250	Oil sight glass	1	
3	194C140	Valve cap	(802 in/lbs) 6	36	126C430	Snap ring	1	
4	194C150	Ring	6	37	194C410	O-Ring ø132x3	1	
5	114C450	O-Ring ø20.24x2.62	12	38	120C430	Bolt M5x6	(89 in/lbs) 6	
6	194S050	Complete valve	6	39	194S010	Complete cover	1	
7	194C021	Pump head	1	40	178C690	Contrast disc	1	
7	1941210	Pump head	A 1	41	114C450	O-Ring ø20.24x2.62	1	
8	55C350	O-Ring ø25.81x2.62	1	42	82C680	Seal ring	1	
9	114C300	Plug 5/16" G	3	43	194C550	Seal	3	
10	198C740	Plug 3/8" G	3	44	194C370	Rail 1-1/4"	2	
11	74C290	O-Ring ø14x1.78	3	45	194C380	Bolt	4	
12	194C440	High pressure seal wiring	3	46	20C231	Washer	4	
13	194C340	Front piston guide	3	47	1941240	Open bearing support	1	
14	1942410	Piston guide	3	53	1941640	Bolt M5x6	3	
15	84C280	Low pressure seal	3	60	1949216	Complete pump head	1	
16	82C490	O-Ring ø34.65x1.78	3	60	1945217	Complete pump head	A 1	
18	134C600	Washer Cooper	3	75	1941270	Oil sight glass	1	
19	1942330	Piston	3	76	10C410	O-Ring ø34.6x2.62	1	
21	1383190	Spacer	3	77	1941250	Contrast disc	1	
23	194C950	Guiding piston	3	78	1941290	Seal	1	
24	194C050	Piston pin	3					
25	1941380	O-Ring ø66.34x2.62	2		AR64516	Oil	2	
	1941390	Shim 0.05 mm	1-3			Oil Capacity - 32 oz		
	1941400	Shim 0.10 mm	1-3					
	1941410	Shim 0.19 mm	1-3					
	1941420	Shim 0.25 mm	1-3					
	27	194S011	Side cover w/sight glass	1				
	28	85C370	Bolt M8x6	(217 in/lbs) 8				
	29	114C410	Bearing	2				
	30	194C051	Con-rod	(86 in/lbs) 3				
		194C180	Crankshaft 24mm	1				
		194C150	Crankshaft 24mm	A 1				
		194C530	Crankshaft 24mm	1				
		194C170	Crankshaft 24mm	1				
	32	65C250	Key	1				
	33	1941330	Pump housing	1				

Legend		
ø 20	ø 20	ø 20
For O	For A	For ●
XWA-M5.5G40	XWA-M8G29	XWA-M4G40
	XWA-M8G35	

For ■  
XWA-M7G40

A.R. North America, Inc. • www.arnorthamerica.com • info@arnorthamerica.com

XWA-M7G40N



### PARTS LIST

POS.	PART NO.	DESCRIPTION	QTY.	POS.	PART NO.	DESCRIPTION	QTY.	POS.	PART NO.	DESCRIPTION	QTY.
1	66124541	Manifold, Ø 18mm	-	42	66380470	Seal Retainer, Ø 24mm	3	43	90361800	O-ring, Ø 34.65x1.78	3
	66120341	Manifold, Ø 20mm	-		66382570	Seal Retainer, Ø 28mm	3	44	90265200	LP Seal, Ø 18mm	3
	66120141	Manifold, Ø 22 mm	-		90269000	LP Seal, Ø 20mm	3		90271500	LP Seal, Ø 22mm	3
	66120241	Manifold, Ø 24mm	-		90273800	LP Seal, Ø 24mm	3		90275300	LP Seal, Ø 28mm	3
2	66124541	Manifold, Ø 26mm	-		90276370	Intermediate Ring, Ø 18mm	3	45	66216370	Intermediate Ring, Ø 18mm	3
3	99380100	Headball M10 x 50	8		66216870	Intermediate Ring, Ø 20mm	3		66216170	Intermediate Ring, Ø 20mm	3
3.5	90385700	O-ring, Ø 23.81x2.62	6		66216470	Intermediate Ring, Ø 24mm	3		66216470	Intermediate Ring, Ø 24mm	3
4	90385700	O-ring, Ø 23.81x2.62	6		66250070	Intermediate Ring, Ø 28mm	3	48	90265500	HP Seal, Ø 18mm	3
4	36203386	Valve Seal	6		90269200	HP Seal, Ø 20mm	3		90271700	HP Seal, Ø 22mm	3
5	36203476	Valve Poppet	6		90274100	HP Seal, Ø 24mm	3		90275400	HP Seal, Ø 28mm	3
6	94738300	Valve Spring Ø10x18x18.5	6		47200074	Pump Rail	3	47	47200074	Pump Rail	3
7	36203551	Valve Guide	6		96710800	Washer M10	4	48	96710800	Washer M10	4
8	90516500	Anti-castling Ø24.7xØ11.5	6		99364400	Screw M10 x 18	4	49	99364400	Screw M10 x 18	4
9	66130341	Plug, M32x1.5x28.5	8		90312600	Guide Bushing	3	50	90312600	Guide Bushing	3
10	36712701	Valve Assy., Complete	6		90162500	Seal, Plunger Rod	3	51	90162500	Seal, Plunger Rod	3
11	99305300	Screw M8 x 16	8		96738000	Gasket Aluminium 3/E	1	52	96738000	Gasket Aluminium 3/E	1
12	47151222	Cover	-		96770000	Washer	1	53	96770000	Washer	1
13	90381300	O-ring, Ø37.95x2.62	2	36	90358400	O-ring, Ø 10.82x1.78	3	54	98228800	Plug, G3M"x18	1
14	90387700	O-ring, Ø 34.34x2.62	2	37	66219586	Plunger Bolt	3	55	98204300	Plug 1/4" x 15	3
15	70211801	Oil Sight Glass	-	38	47151022	Side Cover, PTC	1				
18	90075300	Retainer Clip	-	39	90184800	Sea, Shaft	1				
17	91838300	Bearing	2	40	90383300	O-ring, Ø 13.95x2.62	1				
18	66010322	Crankcase	-	41	98210030	Plug 3/8 x 13	2				
19	98210300	Dipstick, vented	-	42	66080370	Sea Retainer, Ø 19 mm	3				
20	66021035	Dual Shaft, 19mm Stroke	-		66080070	Sea Retainer, Ø 20mm	3				
	66020325	Crankshaft, 19mm Stroke	-		66080170	Sea Retainer, Ø 22mm	3				
	66020435	Crankshaft, 21mm Stroke	-								

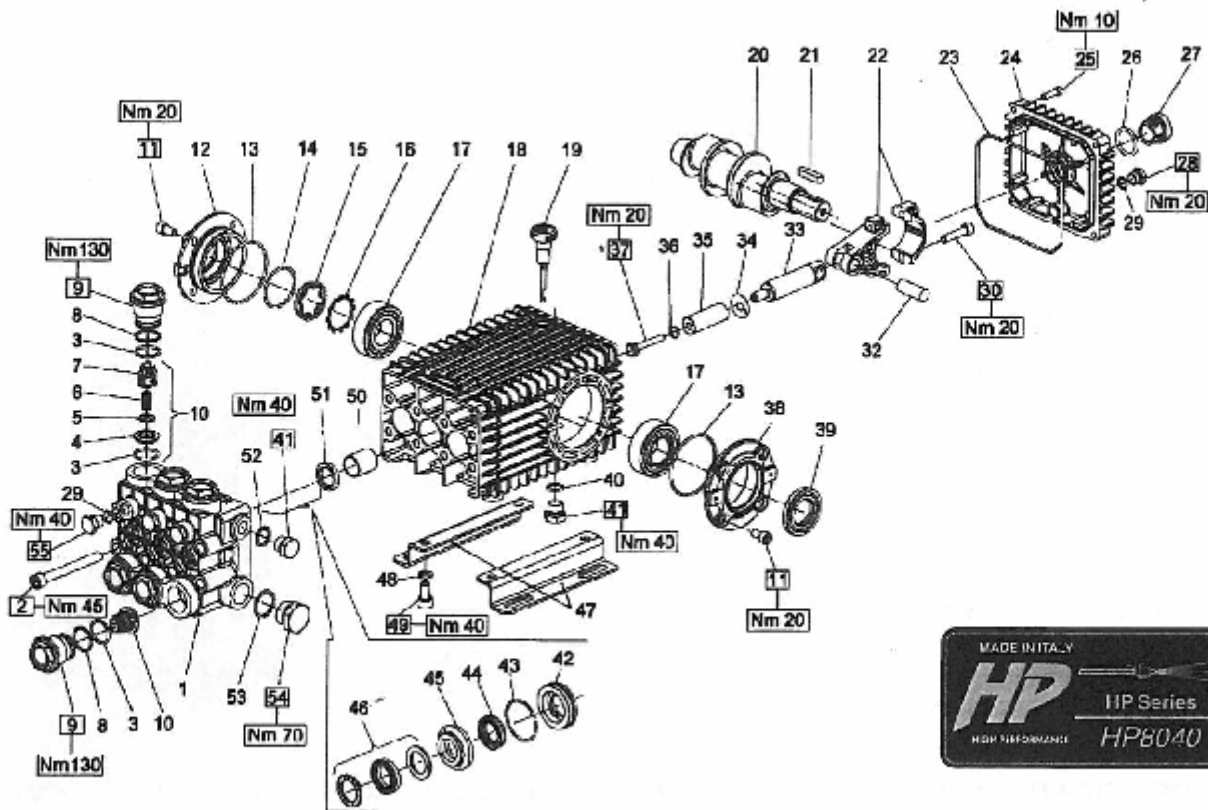
### REPAIR KITS

KIT NO.	K02	K03	K169	K180 (18mm)	K176 (18mm)	K170 (20mm)	K171 (20mm)	K172 (22mm)	K173 (22mm)	K181 (24 mm)	K182 (24mm)	K248 (29mm)	K247 (28mm)
POS. NO'S INCLUDED IN KIT	51	39	3, 4, 5, 6, 7 (10)	44, 46	42, 43, 44, 45, 46	44, 46	42, 43, 44, 45, 46	44, 46	42, 43, 44, 45, 46	44, 46	42, 43, 44, 45, 46	44, 46	42, 43, 44, 45, 46
NUMBER OF ASSEMBLIES IN KIT	3	1	6	3	1	3	1	3	1	3	1	3	1
NUMBER OF CYLINDERS KIT WILL SERVICE	3	N/A	3	3	1	3	1	3	1	3	1	3	1

Ref 310045 Rev. L  
04-15



TSF2021=20mm BORE



## PARTS LIST

POS.	PART NO.	DESCRIPTION	QTY.	POS.	PART NO.	DESCRIPTION	QTY.	POS.	PART NO.	DESCRIPTION	QTY.
1	66120641	Manifold NI, Ø 20mm	1	19	98210630	Dipstick, vented	1	30	47151022	Side Cover, PTO	1
2	99380100	Headbolt M10 x 90	8	20	66020035	Crankshaft, 19mm Stroke	1	39	90164800	Seal, Shaft	1
3	90385700	O-ring, Ø 23.81x2.62	12	21	91489200	Key, 6x7x35	1	40	90383300	O-ring, Ø 13.95x2.62	1
4	36203366	Valve Seal	6	22	66030001	Connecting Rod, Complete	3	41	98210000	Plug 3/8 x 13	2
5	36203476	Valve Poppet	6	23	90392200	O-ring, Ø133.02x2.62	1	42	66080070	Seal Retainer, Ø 20mm	3
6	94758800	Valve Spring Ø10x18x18.5	6	24	66160022	Rear Cover	1	43	90361600	O-ring, Ø 34.65x1.78	3
7	36203551	Valve Guide	6	25	99188400	Screw, M6x20	4	44	90269000	LP Seal, Ø 20mm	3
8	90516500	Anti-ext ring Ø21.7x29x1.5	6	26	90405100	O ring, 26.58x3.53	4	45	66215070	Intermediate Ring, Ø 20mm	3
9	66130341	Plug NI, M32x1.5x29.5	6	27	63210051	Oil Level Indicator	1	46	90269200	HP Seal, Ø 20mm	3
10	96712701	Valve Assy., Complete	6	28	98204100	Plug, G1/4"x9	1	47	47200074	Pump Rail	2
11	993C3900	Screw M8 x 15	8	29	701013	O-ring, Ø 425x.070	4	48	96710600	Washer M10	4
12	47151222	Cover	1	30	99309900	Screw, M6x35	6	49	99364400	Screw M10 x 18	4
13	90391300	O-ring, Ø67.95x2.62	2	32	97740500	Wrist Pin, 14x39	3	50	90912600	Guide Bushing	3
14	90387700	O-ring, Ø 39.34x2.62	1	33	66050064	Piston Guide	3	51	90162500	Seal, Plunger Rod	3
15	70211801	Oil Sight Glass	1	34	96710100	Flinger Washer	3	52	96733000	Gasket, Aluminum 3/8"	1
16	90075600	Retainer Clip	1	35	66040009	Plunger, Ø 20mm	3	53	96770000	Washer	1
17	91838000	Bearing	2	36	90358400	O-ring, Ø 10.82x1.78	3	54	98228800	Plug, G3/4"x16	1
18	66010022	Crankcase	1	37	66219566	Plunger Bolt	3	55	98204300	Plug 1/4" x 13	3

## REPAIR KITS

KIT NO.	K02	K03	K169	K170 (20mm)	K171 (20mm)
POS. NO'S INCLUDED IN KIT	51	39	3, 4, 5, 6, (10)	44, 46	42, 43, 44, 45, 46
NUMBER OF ASSEMBLIES IN KIT	3	1	6	3	1
NUMBER OF CYLINDERS KIT WILL SERVICE	3	N/A	3	3	1

## TORQUE SPECS\*

Pos.	N-M	FL. lbs.
2	45	33.2
10	130	95.9
12	20	14.8
26	10	7.4
29	20	14.8
31	20	14.8
36**	20	14.8
41	20	14.8
42	40	29.5
51	40	29.5
55	70	51.6
58	40	29.5

\*Decrease torque by 20% if threads are lubricated.  
\*\*Use Loctite 542

**Pressure-Pro**

7300 Commercial Circle, Fort Pierce, FL 34951 772-461-4486 Fax: 888-871-0365  
e-mail: sales@pressure-pro.com web: www.pressure-pro.com

## 10. Replacement Parts

For best performance specify genuine *Beckett* replacement parts

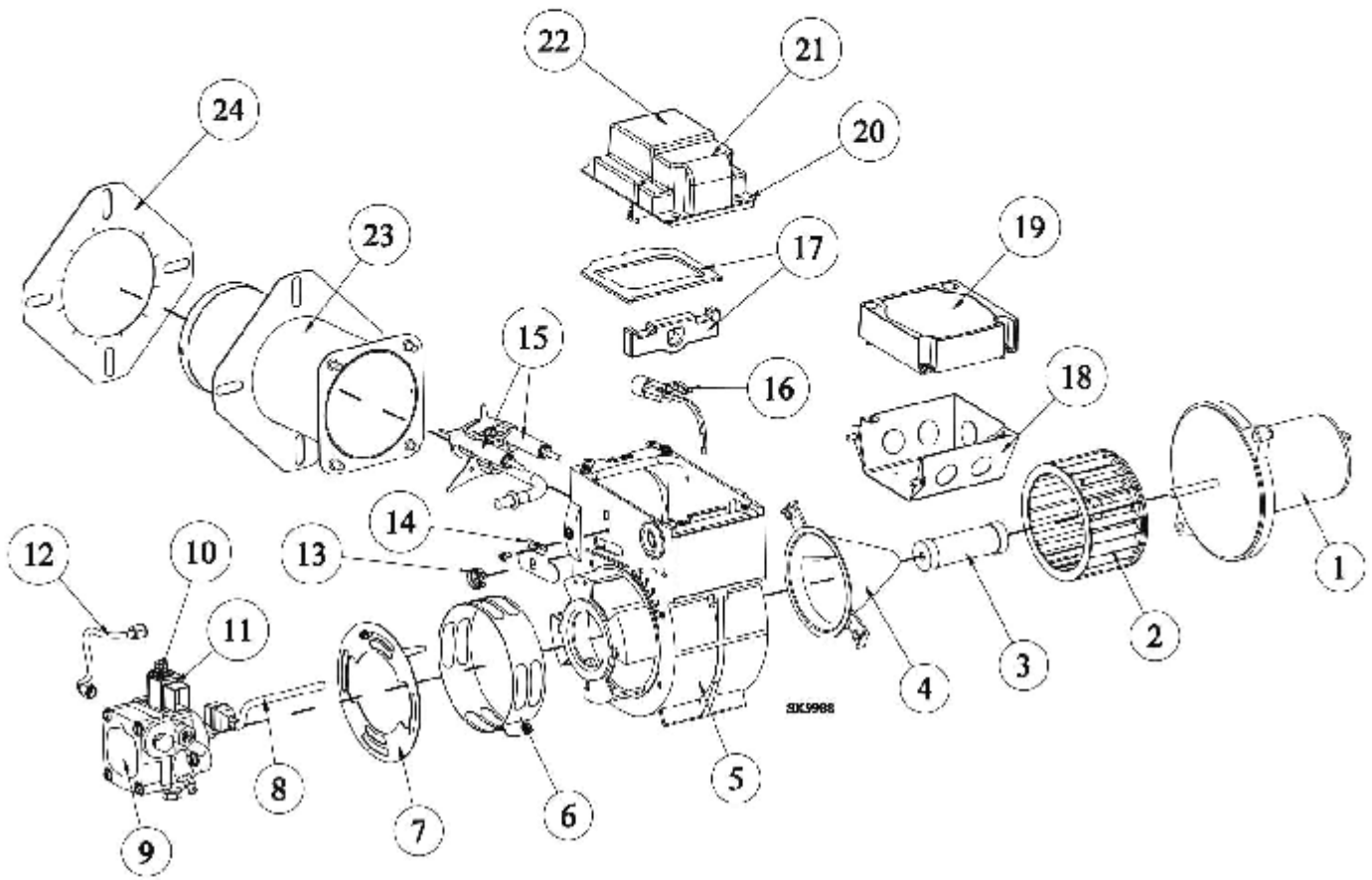


Illustration #	Description	Part#
1	DC Motor	21699UF
2	Blower Wheel	21404U
3	Coupling	21405
4	Air Guide	31231U
5	Burner Housing - Black	55874BKU
6	Air Band	5151501
7	Air Shutter - 4 Slot Air Shutter - 8 Slot	3709 3494
8	Cord set	21807
9	Pump (CleanCut)	2184402U
10	Tube Assembly	21877U
11	12 volt Coil	21754U
12	8" Copper Tubing	5394
13	Escutcheon Plate Spline Nut	3666

Illustration #	Description	Part#
14	Escutcheon Plate	3493
15	Electrode Kit over 3-5/8"	570731
16	Cad Cell Detector	7492/7006U
17	Ignitor Gasket Kit	51411
18	4X4 Wiring Box Kit	5770
19	Control Kit	7556x-xxxxU*
20	Ignitor Ass'y w ICB Ignitor w/o ICB	51776TU 51777TU
21	ICB Kit	51663
22	Ignitor only	7435U
23	Air Tube Ass'y	Specify
24	Flange Mounting Gasket	Specify
Not Shown	Tune-up Kit for 30 & 35 Air Tube Lengths	578730

\* 'X's indicate timing options. Contact Beckett for available part numbers.

### PRO101 BURNER HEAD

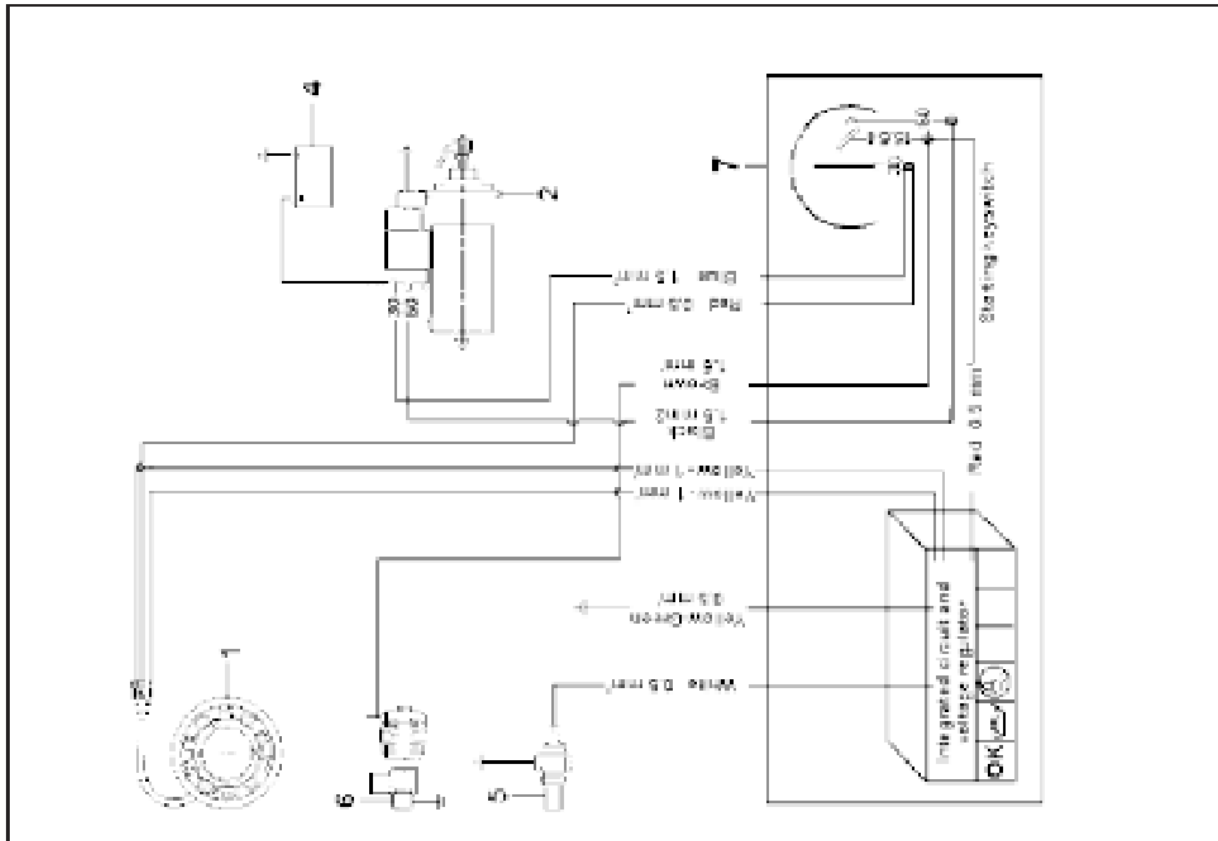


12V electric ignition layout with motor protection (optional)

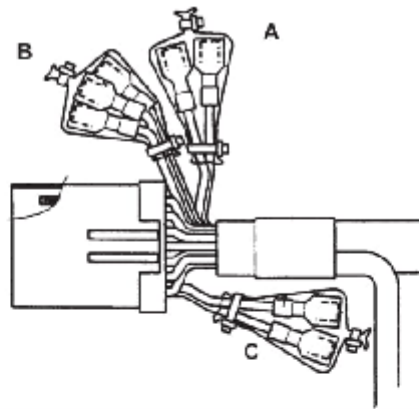
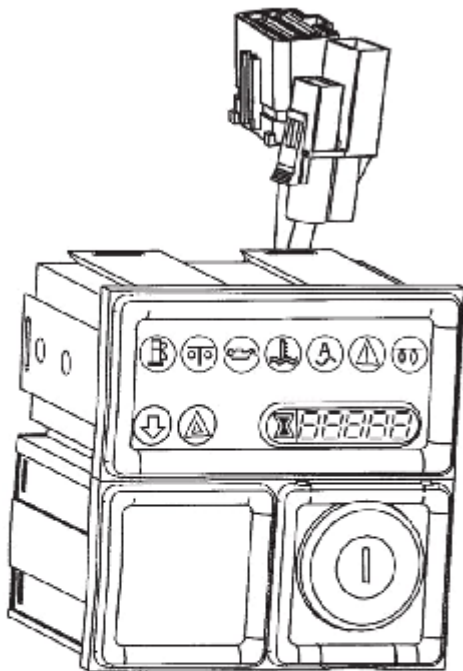
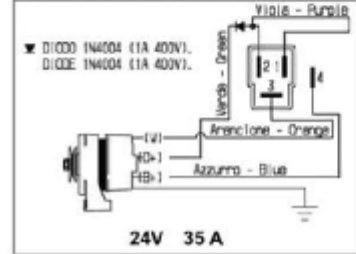
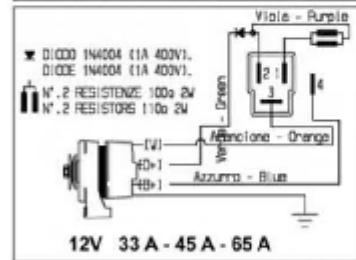
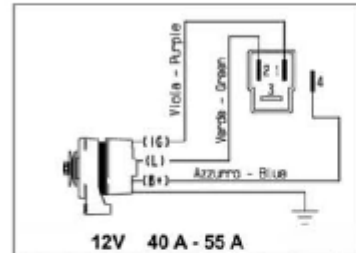
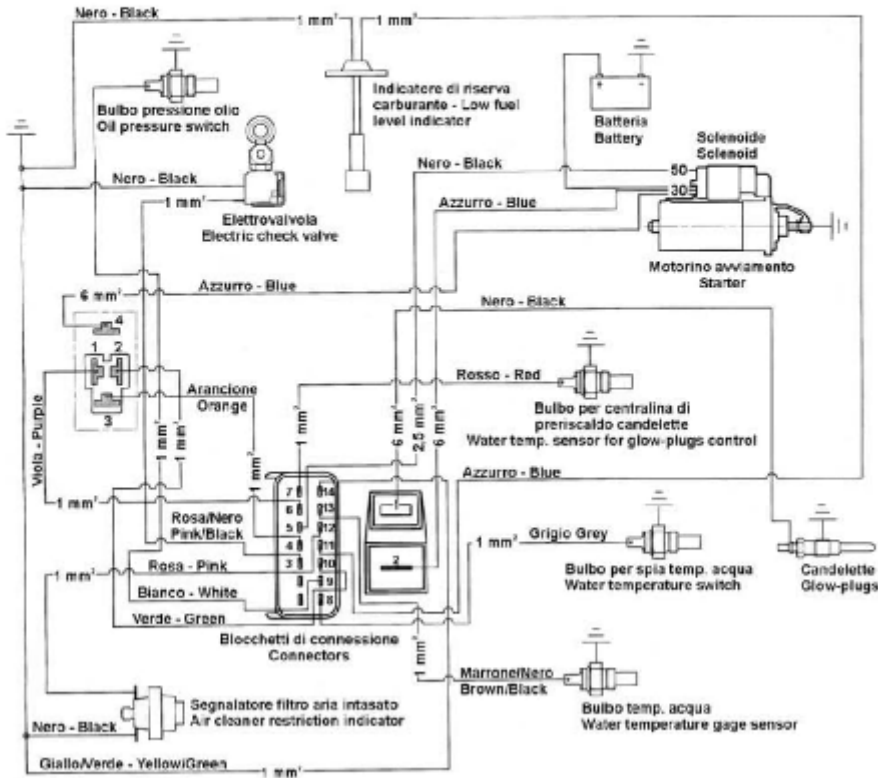
Components:

- 1 Alternator
- 2 Starter motor
- 4 Battery
- 5 Pressure switch
- 6 Solenoid valve
- 7 Ignition switch
- 8 Panel

**Note:** The battery, which is not supplied by KOHLER, should have 12V nominal voltage rating and a capacity of not less than 44 Ah; 210 Amp. of fast discharge intensity.



ELECTRIC CONTROL PANEL WITH AUTOMATIC ENGINE STOP (UPON REQUEST)



AUXILIARY TERMINALS	
<b>A</b>	Brown-black = Signal for H2O temperature Instrument (6.3) Orange = Signal for electric rev. Indicator (6.3)
<b>B</b>	White = Oil pressure ON/OFF signal (6.3) Purple - (+) Positive under key (6.3) Yellow-green = (-) Negative - Earth (6.3)
<b>C</b>	Yellow = Protected socket available for engine stop in an emergency (6.3) White-blue = Socket available for emergency indicator light (6.3)